

PROYECTO BACKGROUNDS PROJECT



Projet cofinancé par le Fonds Européen de Développement Régional
Project cofinanced by the European Regional Development Fund



NEWSLETTER **N. 1** September, 2011

About the BACKGROUNDS project

The main objective of the BACKGROUNDS project, “Improving Productive Clusters Accessibility to Global Market”, is to develop a government model that involves ports and port infrastructures in the Mediterranean, as well as to promote better integration of the poles with their own territories and with the most relevant production clusters. The aim is to integrate local peculiarities within the framework of the global market.

BACKGROUNDS is a European project, part of the Med Program, co-financed by the European Regional Development Fund. It started in 2009 and it will be completed in the first part of the year 2012.

Under the guidance of the Region of Sicily, the partners (Luka Koper, Port Authority Marseille Fos, Region Liguria, Greek institute CERTH and the Spanish institute FEPORTS) are working to increase the integration of Med ports with their own territories and relevant productive clusters. Backgrounds aims at providing efficient tools to face functional, operational and organisational problems related to the traffic of goods and passengers in port regions. These instruments should reduce roads congestions through the implementation of a common communication protocol. Till now the project partners have studied the infrastructural characteristics of each port system, the inclusion in the European transport system, the demand for freight and passenger transport in the Backgrounds area and they have also started to deal with price indicators for each transport route.

The main issue of the project is to increase the attractiveness of the Ports and their accessibility to infrastructures for the local economic and productive system.
More information on: <http://www.backgrounds-project.eu>



STATE OF THE ART

COMPONENT 3 - COMPLETED

Analysis of the critical state of ports and evaluation of benchmarks in harbor systems involved in the project

COMPONENT 4 - COMPLETED

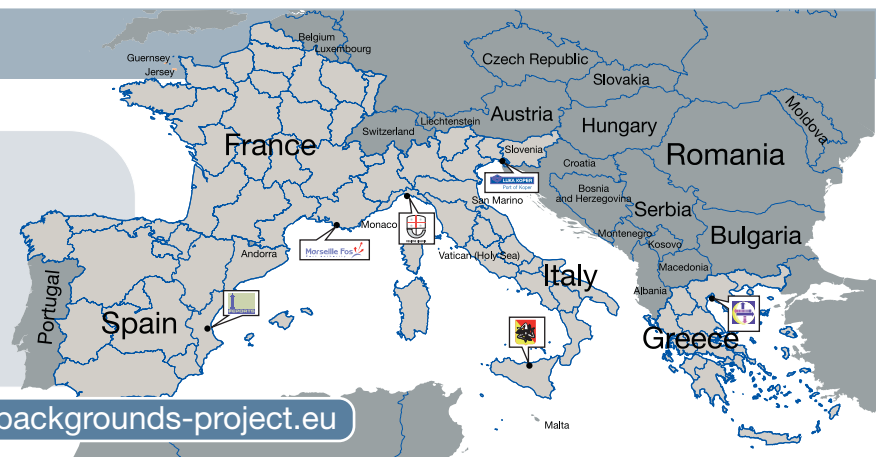
Establishment of a network model of inter-modal routes and interconnections with the involved territories

COMPONENT 5 - IN PROGRESS

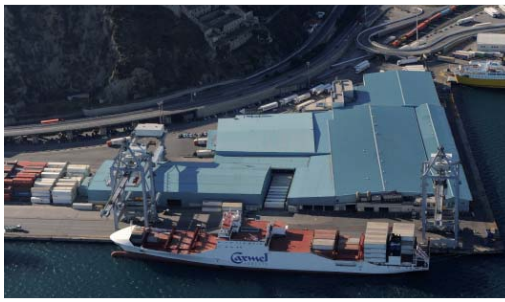
Evaluation of possible scenarios of the inter-modal network system and pilot testing of the model

BACKGROUNDS' partners

Sicily Region
FEPORTS
Liguria Region
Port of Koper
CERTH
Port of Marseille Fos Authority



<http://www.backgrounds-project.eu>



SOURCE: Liguria Region

Analysis of the critical state of ports and evaluation of indicators in harbour systems involved within the project (Component 3) - LIGURIA REGION

The Component 3 of BACKGROUNDS project has focused on the analysis of the relevant port systems, sited within the territories of the Partners, the identification of their catchment area and the evaluation of indicators concerning the accessibility of the port systems, by means of three specific sub-activities or phases.

All the Partners have carried out the project activities on the basis of a common methodology, elaborated by the Coordinating Partner, Liguria Region, together with BACKGROUNDS Lead Partner, Sicily Region, with the support of their local partnerships, a board of experts in the fields of transport, engineering and economy, and then approved by all the Partnership.

Thanks to this document all the Partners have collected, processed and analyzed an enormous quantity of data and information concerning the flows of goods and passengers, the main features of the port systems located in their territories, the productive clusters and the infrastructures of transport within the catchment area of the relevant ports.

The port analysis has focused on the operational capacities of the ports and the identification of their structural and functional elements, the road and rail networks connecting the ports with their hinterland, the physical features and the infrastructural and mechanical equipment of the port terminals, as well as of the inland and dry ports linked with them, the technical and nautical services of the ports, the public institutions operating in the port areas and the strategic and operative plans elaborated for the future.

Finally, some interconnection indicators have been studied and they regarded: the infrastructural networks of the ports, with a specific focus on times and costs related to the relationship between the ports and their consumption and production centers, as well as with their logistic and infrastructural network.

The deliverables of the abovementioned activities have been a database on goods and passengers and an in-depth study both of the features of the most relevant port systems within Partners' territories and of their catchment area, including a set of indicators on the accessibility of the ports considered by the Partners.

In particular, the catchment area has been defined on the basis of a geographical method (within 200 Km area far-off the port/s considered or, eventually, a more distant area for including all the relevant productive clusters that could use the port for their import and export activities) and quantitative and qualitative data.

Each Partner has identified the relevant catchment area and studied both its infrastructure system, with a particular reference to the connections to the ports and productive clusters.



SOURCE: Collection Grand Port Maritime de Marseille

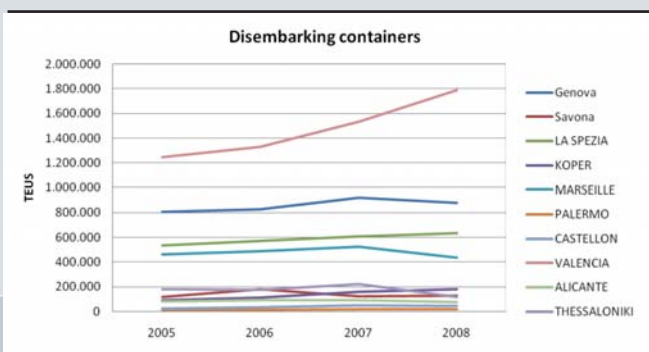
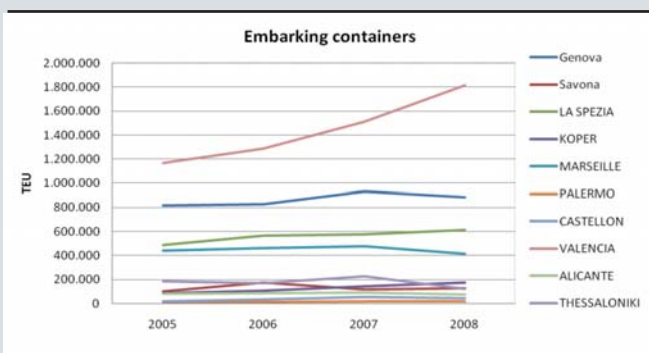


SOURCE: Sicily Region

These activities have been propaedeutic for the representation of the “desirable lines” on the GIS to be implemented in the framework of the Component 4.

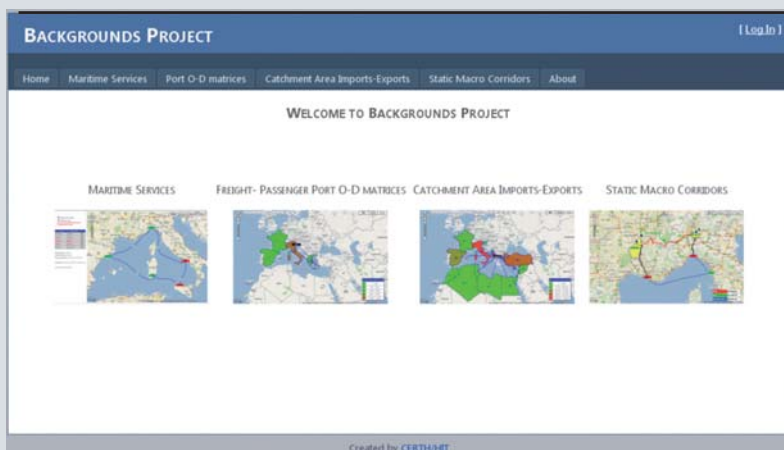
Moreover, being the coordinator of this component, the Liguria Region has taken care of the coordinating process as well as the consolidation of the deliverables elaborated by the various BACKGROUNDS Partners for the three phases of the Component 3.

In order to emphasize the importance, at Mediterranean level, of the goods flows of the different ports of the Regions analyzed by the project Partners, we propose the following figures that highlight the activities of embarking and disembarking of containers (in TEU) for the period 2005 - 2008.

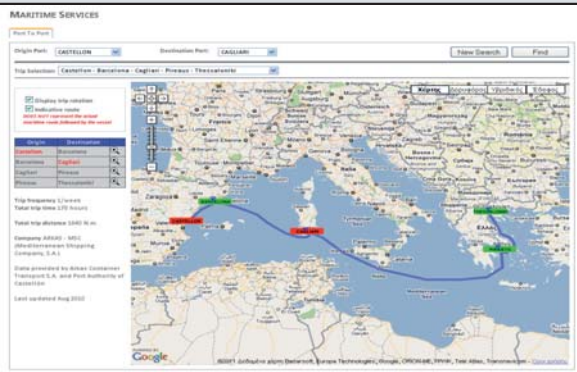


Establishment of a network model of sea roads and intermodal interconnections with the involved territories (Component 4) - CERTH

In the framework of the BACKGROUNDS project, a GIS Application tool was developed (URL: www.backgrounds.imet.gr or www.bg.imet.gr). This tool, that addresses to a series of stakeholders from regional decision makers, port operators, consignees, local producers, shipping agencies, carriers and forwarders to the wider public, visualizes the existing road/rail and maritime network in the background area, provides freight and passenger traffic data from the background ports and trade data from the catchment areas of the background ports. Furthermore, the tool offers the opportunity to evaluate the optimum routes (in terms of cost and time) and to create forecasts and scenarios for the assessment of potential new sea routes throughout the backgrounds basin.



The GIS tool provides all the previous abilities through its 4 services:

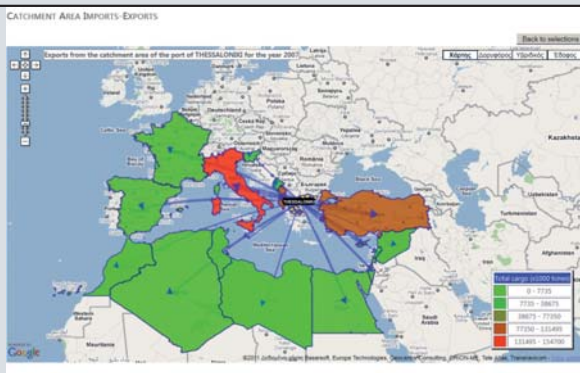
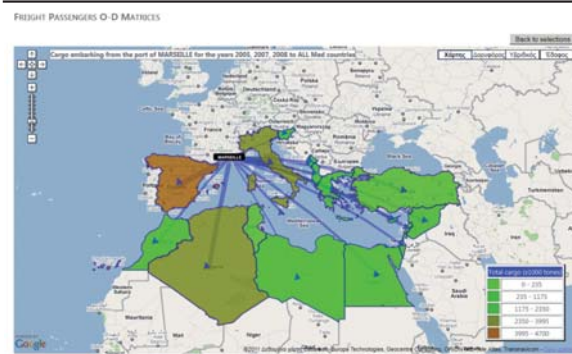


1. The maritime services with the respective information (Origin - Destination - Trip rotation visualization)

The service provides information on the available maritime routes from the Backgrounds Ports to all ports included in the maritime routes that have as a node point one of the Backgrounds Ports. The service also provides information on key characteristics of the routes (distance of the route, trip frequency, total trip time, shipping company that operates it).

2. The Freight/Passengers O/D matrices

The service provides data concerning passenger and cargo traffic from/to the Backgrounds Ports to/from all Backgrounds countries and optionally to/from all MED countries. The data regards the period from 2005 to 2008 and there is an extra functionality through this service that informs the users with the top 5 imports/exports ('winners') in the area.

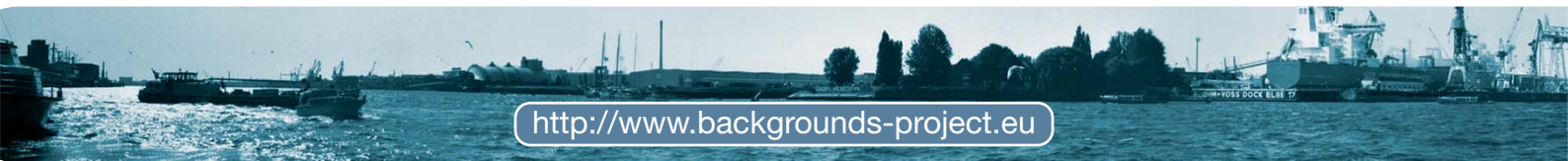
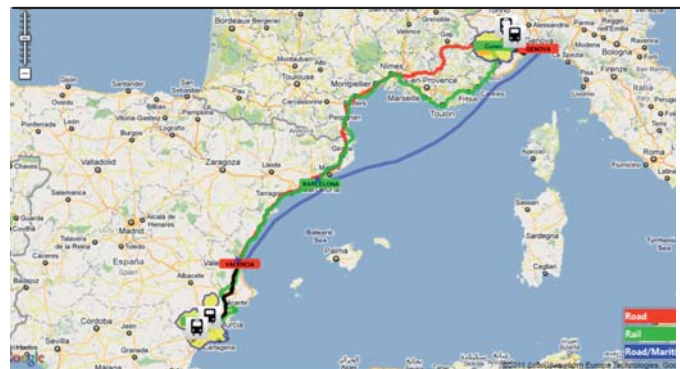


3. The Catchment area's import-export

The third service provides information on cargo (in SITC1 categorization) imported / exported by the Catchments areas' of the Backgrounds Ports from/to all Backgrounds countries and optionally from/to all MED countries.

4. Static macro-corridors

The fourth service of the GIS tool provides information on key macro corridors (modal and intermodal) identified in the framework of the project. The final version of this service will integrate cost and time data on which the routing will be based on.



PAST EVENTS

Kick-off meeting in Palermo, June 2009

The meeting was organized by the Leader of the Project, the Transports and Communications Department of the Sicily Region and it took place in Palermo (Italy) on 10th June 2009.

All members of the partnership attended the starting meeting of the project BACKGROUNDS: the Port of Marseille Fos Authority, the Liguria Region, the Port of Koper (Slovenia), the Centre for Research and Technology Hellas (Thessalonica), Patras Port Authority (Greece) and FEPORTS. All of them coordinated by the Lead Partner of the project, the Transports and Communications Department of the Sicily Region that presented the project and the activities planning for all the project life.

Steering and Technical Committees

After the Kick-off Meeting, four project meetings have been organized: Thessalonica (Greece), 16th October 2009, Marseille (France), on 10th and 11st March 2010, Portoroz (Slovenia), on 15th September 2010 and the last one in Valencia, on 7th April 2011.

Each meeting was meant as an updating of the project. Technical issues were discussed in depth improving the development of the project with the partner's contributions.



Thessalonica (Greece)



Marseille (France)



Portoroz (Slovenia)

FUTURE EVENTS

Thessaloniki (Greece) will held the next Steering and Technical Committee of the Backgrounds project the second week of October 2011, coinciding with the 4th European Conference on ICT for Transport Logistics (ECITL '11) on the 13th and 14th of October 2011 (<http://www.ecitl.eu/programme.php>). During the meeting, the complete GIS tool will be presented.

Maritime Transport Workshop 2011, Valencia the 29 of September. FEPORTS is organizing a workshop where all the maritime transport projects will be met in order to exchange ideas and results.

Final Conference of the project will be probably on February 2012, in Palermo (Italy). It will be an open Conference for all people interested in the results of the project.

PARTNERS CONTACT

Sicily Region
Mr. Monteleone
E-mail: backgrounds@regione.sicilia.it

FEPORTS
Mr. Julio Martínez Alarcón
E-mail: jmartinez@feports-cv.org

Liguria Region
Mr. Riccardo Mollo
E-mail: riccardo.mollo@regione.liguria.it

Port of Koper, d.d.
Ms. Maša Certalič
E-mail: Masa.Certalic@luka-kp.si

CERTH
Ms. Glykeria Myrovali
E-mail: myrovali@certh.gr

Port of Marseille Fos Authority
Mr. Alexandre Antonakas
E-mail: a.antonakas@marseille-port.fr

PROYECTO BACKGROUNDS PROJECT

PARTNERSHIP



DEPARTMENT TRANSPORTS
AND COMMUNICATIONS– SICILY
REGION



PORT INSTITUTE OF
STUDIES AND COOPERATION
OF THE VALENCIAN
COMMUNITY, FEPORTS



REGIONE LIGURIA

LIGURIA REGION



PORT OF KOPER



CENTRE FOR RESEARCH
AND TECHNOLOGY HELLAS /
HELLENIC INSTITUTE OF TRANSPORTS



PORT OF MARSEILLE
FOS AUTHORITY

