


RTG 29
Weight = 1153.1 kg

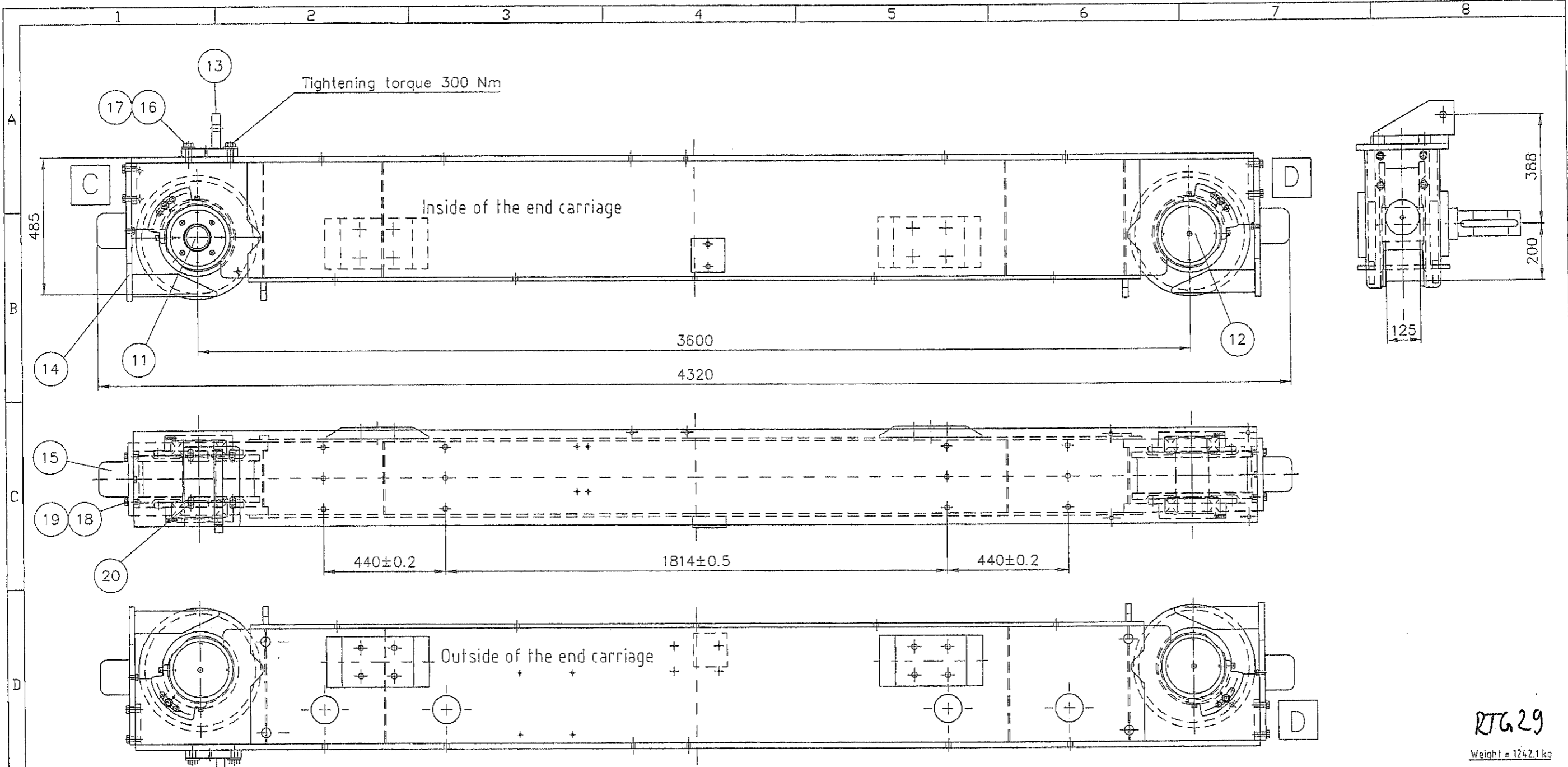
No	Qty	Description	Specification	Material code	Scope	Sum Weight	Rev
20	2	Tapper pin	8x55	DIN258		0	
19	1	Washer	18	DIN125 Zn45		0	
18	8	Screw	M16x50	DIN933-8.8 Zn		0	
17	4	Washer	21	DIN6340 Zn45		0	
16	4	Screw	M20x55	DIN933-8.8 Zn		0	
15	2	Rubber buffer	D125x105			0	
14	2	End plate	LV1050-EP			4.8	
13	1	Torque arm	LV1050-MT			19.3	
12	1	Idle wheel	LHJ4-100-U86-2			190	
11	1	Driving wheel	LHJ4-101-091-U86 (GM9)			200	
0	1	Welding of end c.	LV1050-B11B			695.8	
0	1	Machining of end c.	LV1050-B11A			0	

Appd	Date	File	Scale	Size
	24.02.2004	LV1050-B11.dwg	1:10	A2
Check	TITLE			Reg
	SH END CARRIAGE A-B			
Drawn	M-film			
K. Lehtonen				
 KONECRANES VLC CORP. FINLAND				
Drawing no.				Rev
LV1050-B11				A

WELDS AND TOLERANCES
See Drawing Gxxx-OP20
(Gxxx is Number of the Crane)


A	24.02.04	Approved for production	KLe	
Rev	Date	Description	Drn	Appd
Included in				

THIS DOCUMENT IS THE ABSOLUTE PROPERTY OF KONECRANES VLC CORPORATION. THIS DOCUMENT MUST NOT BE COPIED WITHOUT THE WRITTEN PERMISSION OF KONECRANES VLC CORPORATION OR ITS PARENT COMPANY KCI KONECRANES INTERNATIONAL CORPORATION. THE CONTENTS THEREOF MUST NOT BE DISCLOSED TO A THIRD PARTY NOR BE USED FOR ANY UNAUTHORIZED PURPOSE. CONVICTION WILL BE PROSECUTED.



RTG.29
Weight = 1242.1 kg

No	Qty	Description	Specification	Material code	Scope	Sum Weight	Rev
20	2	Tapper pin	8x55	DIN258		0	
19	1	Washer	18	DIN125 Zn45		0	
18	8	Screw	M16x50	DIN933-8.8 Zn		0	
17	4	Washer	21	DIN634.0 Zn45		0	
16	4	Screw	M20x55	DIN933-8.8 Zn		0	
15	2	Rubber buffer	D125x105			0	
14	2	End plate	LV1050-EP			4.8	
13	1	Torque arm	LV1050-MT			19.3	
12	1	Idle wheel	LHJ4-100-1-U125			216	
11	1	Driving wheel	LHJ4-101-091-U125 (GM9)			226	
0	1	Welding of end c.	LV1050-B22B			732.8	
0	1	Machining of end c.	LV1050-B22A			0	

Appd	Date	File	Scale	Size
	21.04.2004	LV1050-B22.dwg	1:10	A2
Check	TITLE			Reg
	SH END CARRIAGE C-D			
Drawn				M-film
K. Lehtonen				
 KONECRANES V.L.C. CORP. FINLAND				Rev
Drawing no.				A
LV1050-B22				

THIS DOCUMENT IS THE ABSOLUTE PROPERTY OF KONECRANES V.L.C. CORPORATION. THIS DOCUMENT MUST NOT BE COPIED WITHOUT THE WRITTEN PERMISSION OF KONECRANES V.L.C. CORPORATION OR ITS PARENT COMPANY KCI KONECRANES INTERNATIONAL CORPORATION. THE CONTENTS THEREOF MUST NOT BE DISCLOSED TO A THIRD PARTY NOR BE USED FOR ANY UNAUTHORIZED PURPOSE. CONTRAVENTION WILL BE PROSECUTED.

WELDS AND TOLERANCES
See Drawing Gxxx-OP20
(Gxxx is Number of the Crane)

A	21.04.04	Approved for production	KLe		
Rev	Date	Description	Dm	Appd	M-film
Included in					

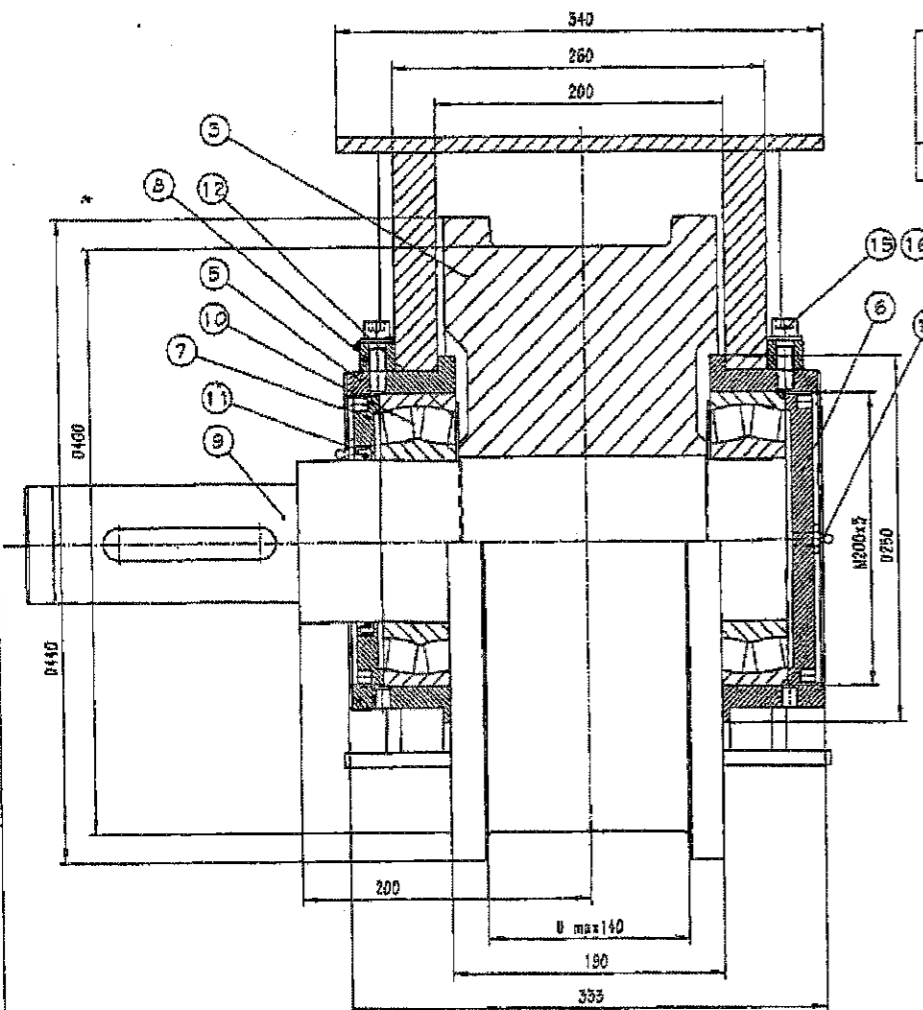
This document is the absolute property of KCI Konecranes Components Corp. KCI Konecranes International Corporation. The contents thereof must not be

document must not be used as a sketch

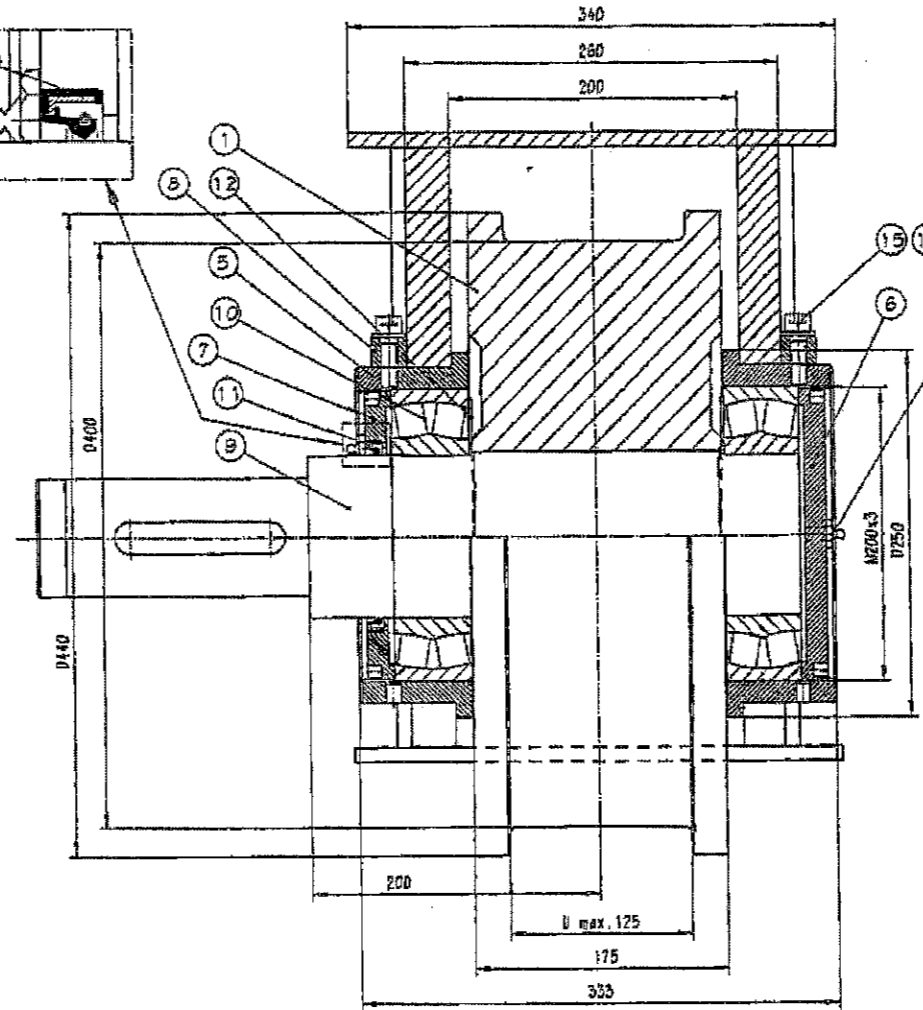
copied without the written permission of KCI Konecranes Components Corp. or any other company. It may not be used for any unauthorized purpose. Contravention will be prosecuted.

parent company

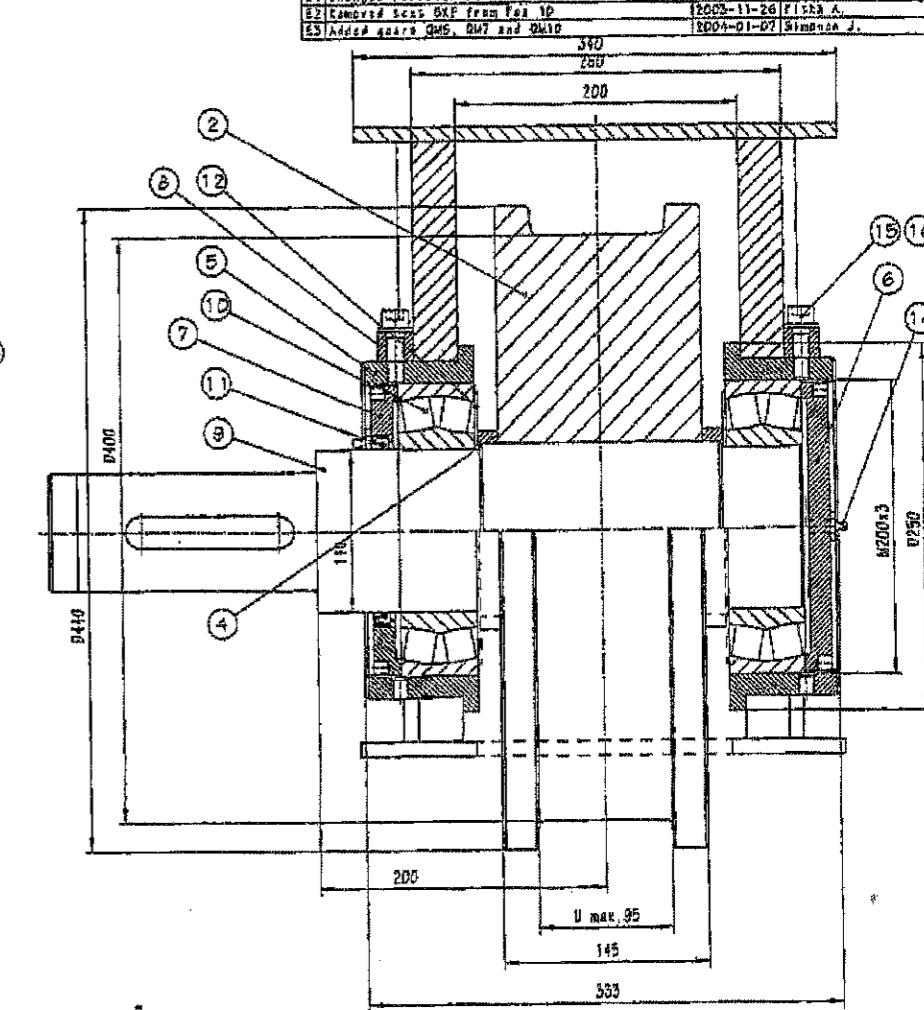
Rev.	Description	Date	Drawn by	Appr. by
01	Code 17 removed	04.29	AME	
02	German twin copy made	07.21	121	
03	Code 07 removed	08.22	121	
04	Rev. Arm. holes and parts... added fastening way	1988-10-19	Karvonen P.	
05	Added variant -5	2000-08-28	Mykylä A.	
06	Sec. bearing 22222 E was 22222 D	2000-08-28	Karvonen P.	
07	Changed Arm. number was ...-1010 and rev. table	2000-10-25	Karvonen P.	
08	Changed revision E1 and part list	2002-03-22	Karvonen P.	
09	Changed sec. BXP from Vol 10	2003-11-26	Riska A.	
10	Added parts QM5, QM7 and QM10	2004-01-07	Silmanen J.	



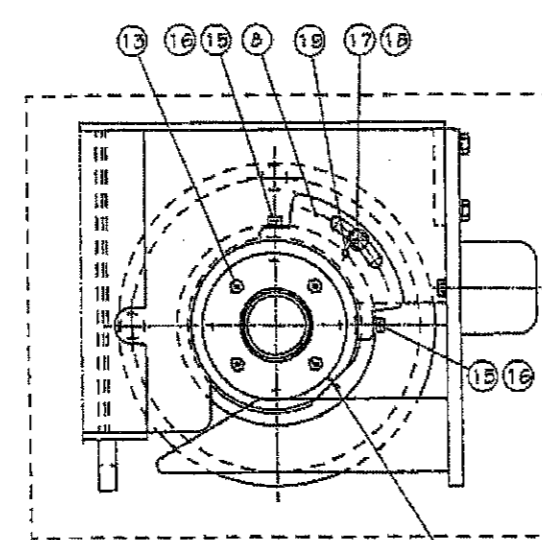
YAR.-3



YAR.-1



YAR.-2



Code	Part Name	Material	QTY	Weight
051	LHJ4-101-0P2 D	GM5	262	208
053	LHJ4-101-0P4 D	GM5	262	208
061	LHJ4-101-0P2 D	GM6	263	208
062	LHJ4-101-0P3 A	GM6E6	264	210
063	LHJ4-101-0P4 A	GM6E5	265	211
065	LHJ4-101-0P2 D	GM6	263	208
071	LHJ4-101-0P2 D	GM7	268	215
072	LHJ4-101-0P3 A	GM7E2	267	215
073	LHJ4-101-0P4 A	GM7E1	269	215
075	LHJ4-101-0P2 D	GM7	268	214
081	LHJ4-101-0P2 D	GM8	270	216
082	LHJ4-101-0P3 A	GM8E5	272	218
083	LHJ4-101-0P4 A	GM8E7	271	217
084	LHJ4-101-0P2 D	GM8	273	218
082	LHJ4-101-0P3 A	GM8E6	275	221
083	LHJ4-101-0P4 A	GM8E5	276	222
101	LHJ4-101-0P2 D	GM10/GM10	273	219
102	LHJ4-101-0P3 A	GM10E1	277	223
103	LHJ4-101-0P4 A	GM10E3	271	217
141	LHJ4-101-0P2 D	H5CX140	267	213
142	LHJ4-101-0P3 A	H5CX140	268	215
181	LHJ4-101-0P2 D	H5CX180	272	219
182	LHJ4-101-0P3 A	H5CX180	276	222
201	LHJ4-101-0P2 D	H5CX200	277	223
202	LHJ4-101-0P3 A	H5CX200	282	228
221	LHJ4-101-0P2 D	H5CX225	278	224

210.7	181.1	203.7	QTY	Part Name	Material	Weight
6	6	6	20	6 Socket set screw	DIN916-M12x12-45H-Zn45	0.04
2	2	2	18	2 Socket set screw	DIN914-M12x30-45H-Zn45	0.04
2	2	2	18	2 Washer	DIN126-A18-Zn45	0.011
2	2	2	17	2 Bolt	DIN933-M16x60-B.8-Zn45	0.117
4	4	4	16	4 Washer	DIN126-A13-Zn45	0.049
4	4	4	15	4 Hexagon socket head	DIN912-M12x35-B.8-AA-80	0.043
1	1	1	14	1 Grease nipple	DIN71412T1-AM10x1	
4	4	4	13	4 Grease nipple	DIN71412T1-BM10x1	
2	2	2	12	2 Plate	PL1x0185/110 525BJR02	0.1
1	1	1	11	1 Radial seal	DIN5760-A110x130x12-NBR	
2	2	2	10	2 Bearing	22222 CC/W33	?
1	1	1	9	1 SHAFT OF RAIL WHEEL	LHJ4-101-0P3; see table	
2	2	2	8	2 WHEEL ADJUSTMENT P	LHJ4-100-0P3 D	2
1	1	1	7	1 BEARING HOUSING CO	LHJ4-101-0P1 D	2.5
1	1	1	6	1 BEARING HOUSING CO	LHJ4-100-0P2 D	3
2	2	2	5	2 BEARING HOUSING	LHJ4-100-0P1 D; Another mirr. im	7
2	2	2	4	2 SLEEVE	LHJ4-100-0P4 B (3)	0.7
1	1	1	3	1 RAIL WHEEL D400	LHJ4-100-0P6 A (1)	172
1	1	1	2	1 RAIL WHEEL D400	LHJ4-100-0P4 B (2)	141
			1	1 RAIL WHEEL D400	LHJ4-100-0P4 B (1)	169

RTG 29

Englannin kiellinen teksti tasolla 92
 English language text on the level 92
 Saksan kiellinen teksti tasolla 93
 Germany's language text is on the level 93

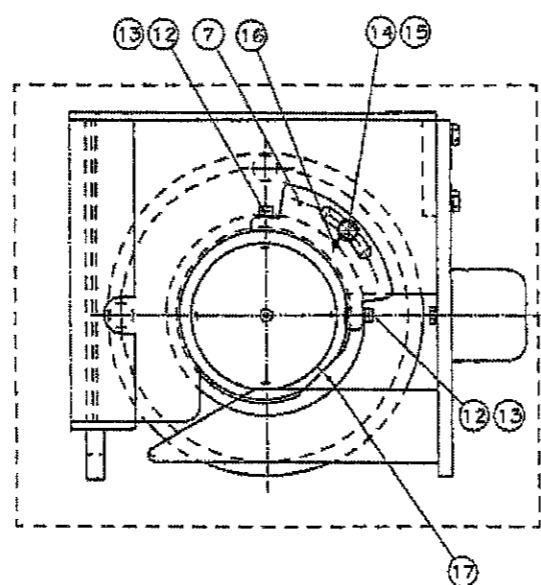
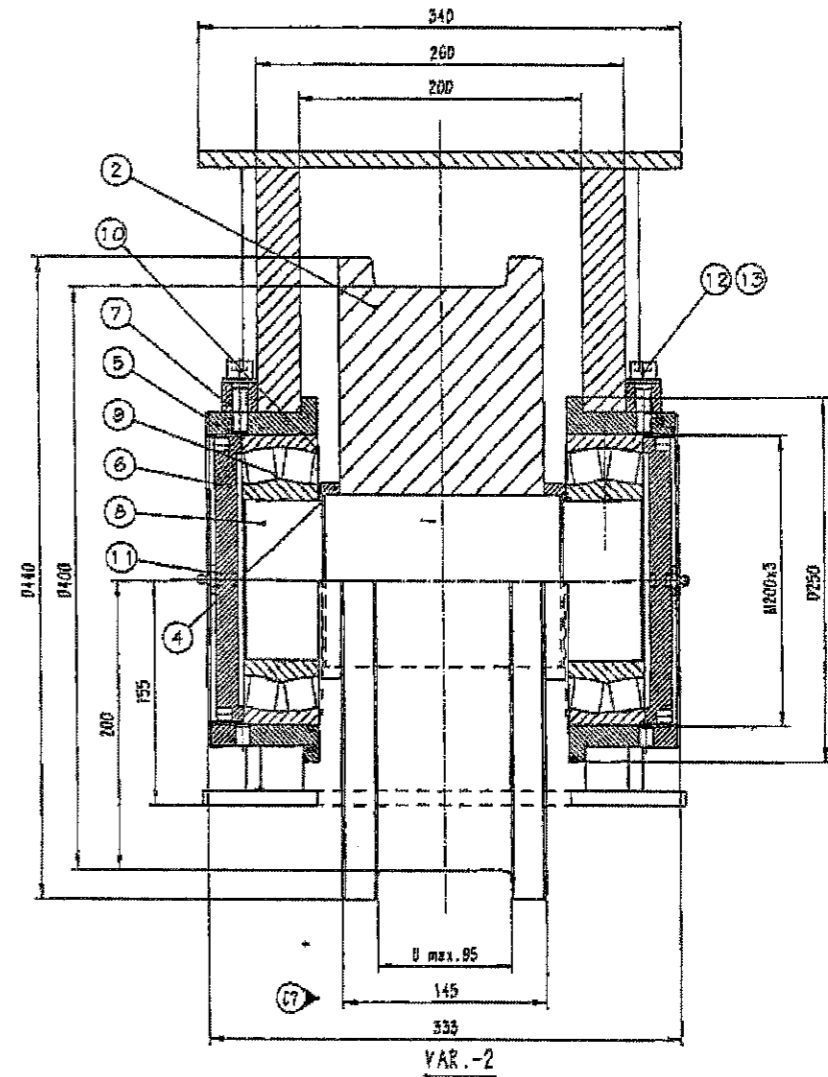
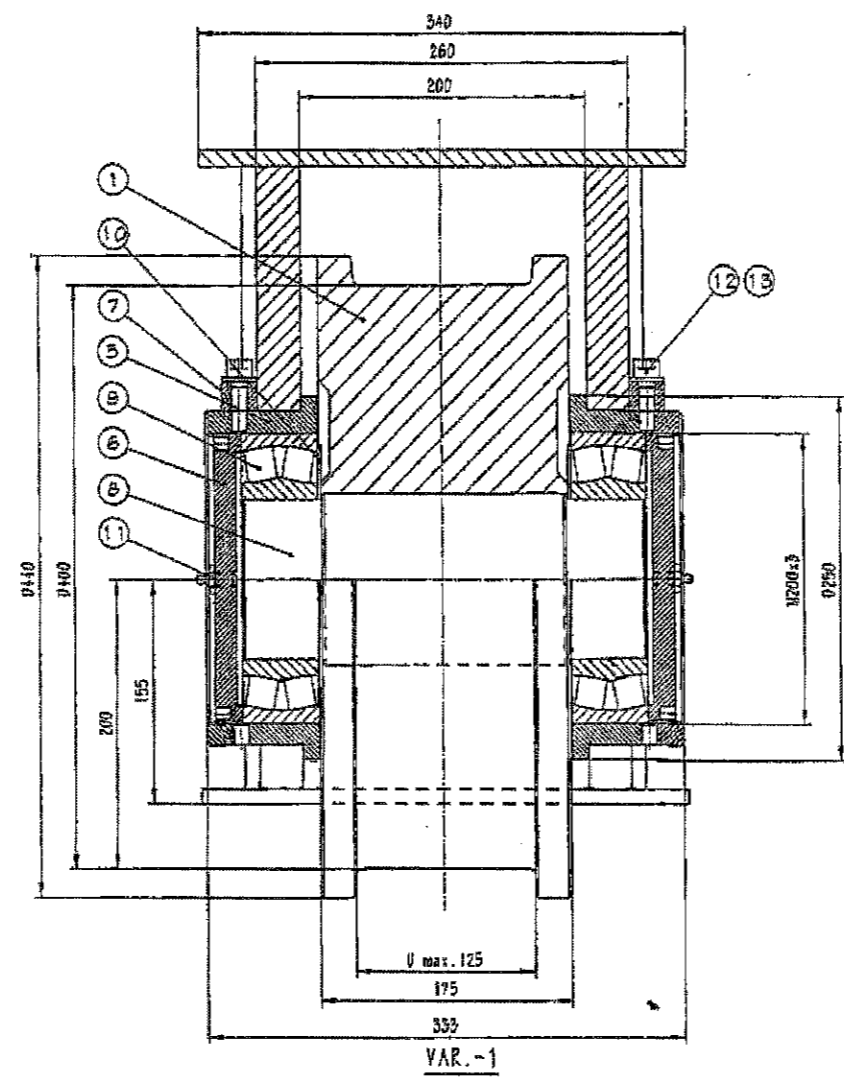
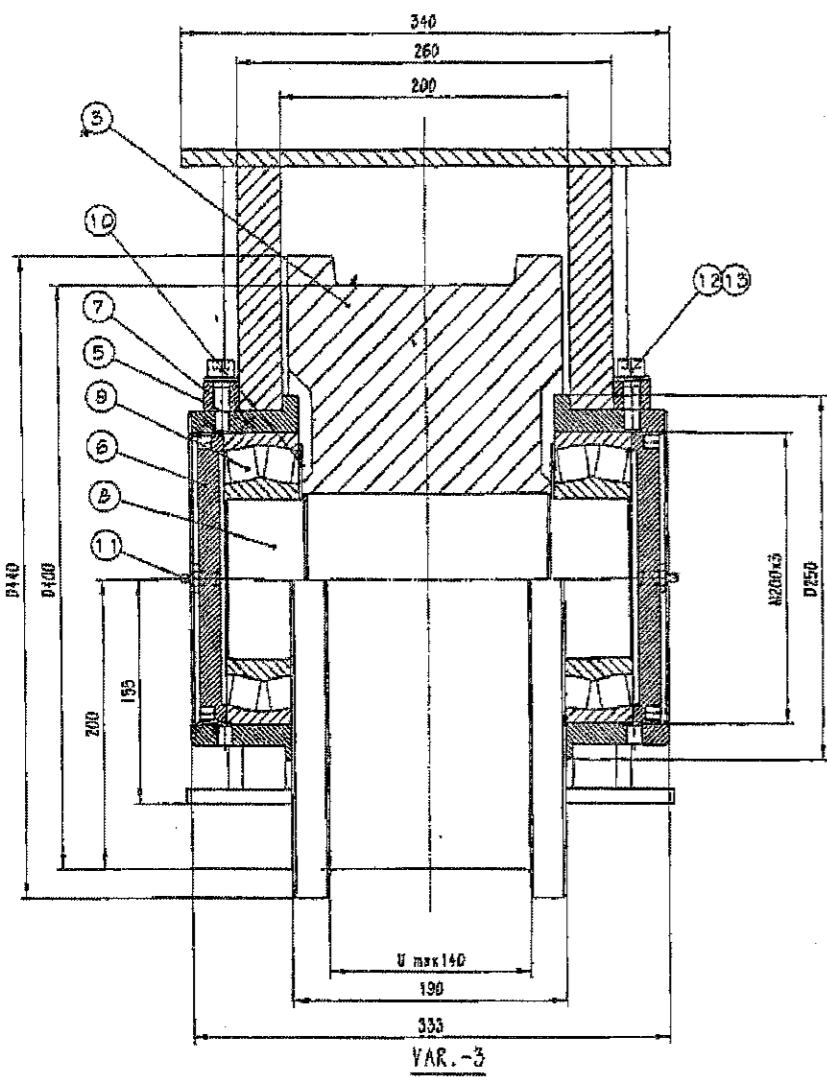
Yksityydet	Yksityydet	Yksityydet	Yksityydet	Yksityydet	Yksityydet	Yksityydet	Yksityydet	Yksityydet	Yksityydet
1	2	3	4	5	6	7	8	9	10
11	12	13	14	15	16	17	18	19	20
21	22	23	24	25	26	27	28	29	30
31	32	33	34	35	36	37	38	39	40
41	42	43	44	45	46	47	48	49	50
51	52	53	54	55	56	57	58	59	60
61	62	63	64	65	66	67	68	69	70
71	72	73	74	75	76	77	78	79	80
81	82	83	84	85	86	87	88	89	90
91	92	93	94	95	96	97	98	99	100

Yksityydet	Yksityydet	Yksityydet	Yksityydet	Yksityydet
1	2	3	4	5
6	7	8	9	10
11	12	13	14	15
16	17	18	19	20
21	22	23	24	25
26	27	28	29	30
31	32	33	34	35
36	37	38	39	40
41	42	43	44	45
46	47	48	49	50
51	52	53	54	55
56	57	58	59	60
61	62	63	64	65
66	67	68	69	70
71	72	73	74	75
76	77	78	79	80
81	82	83	84	85
86	87	88	89	90
91	92	93	94	95
96	97	98	99	100

KANTOPYÖRÄN KOKONPANO
 End carriages
 LHJ4-101-
 E5

This document is the absolute property of KCI Konecranes Components Corp. KCI Konecranes International Corporation. The contents thereof must not be disclosed to a third party without the written permission of KCI Konecranes Components Corp. or KCI Konecranes International Corporation. Contravention will be prosecuted.

No.	Description	Date	Revised by	Rev. No.
C1	Added var. -2	04.10	SP1	
C2	German data copy made	07.21	TS1	
C3	Part number 7 was not 6	08.51	TS1	
C4	Revised drawing sheet and part list	1999-10-18	Sovänen P.	
C5	Added variant -3	2000-08-25	Hyttinen J.	
C6	Changed drawing number was ...-1999	2000-10-25	Sovänen P.	
C7	Dim 145 was 125	2001-06-11	Sovänen M.	
D1	Changed revision D1 and part list	2002-03-27	Sovänen P.	
D2	Removed screw 9CF from part 9	2003-11-26	Piikki A.	



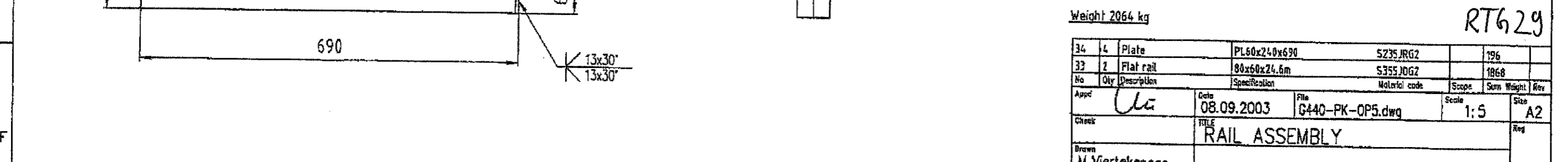
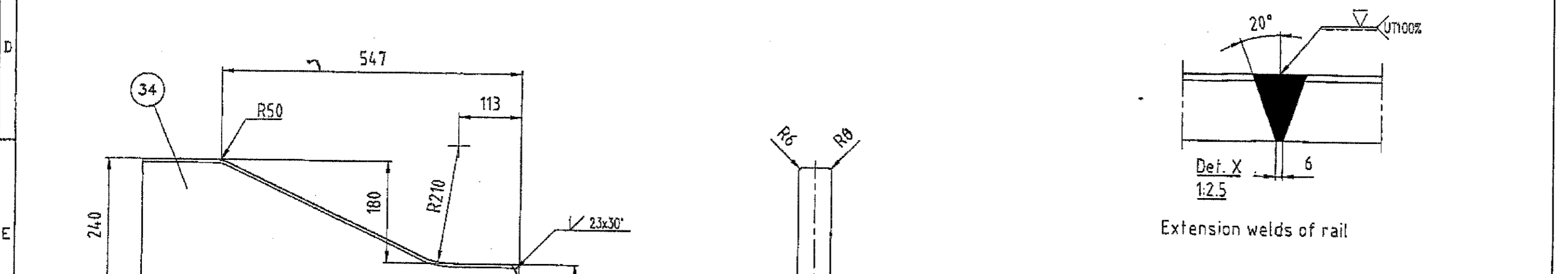
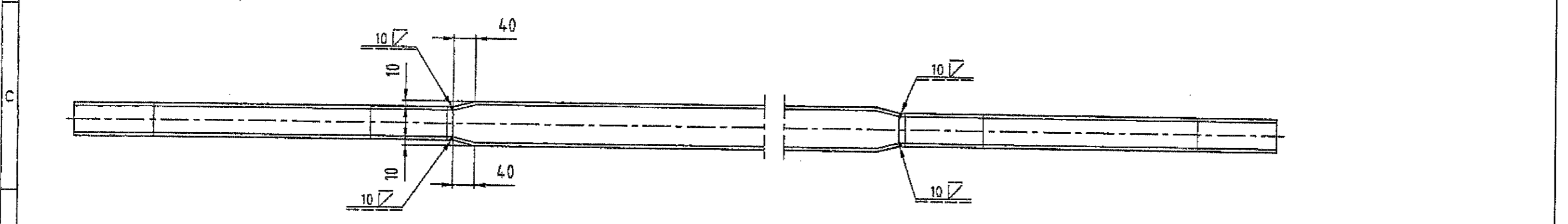
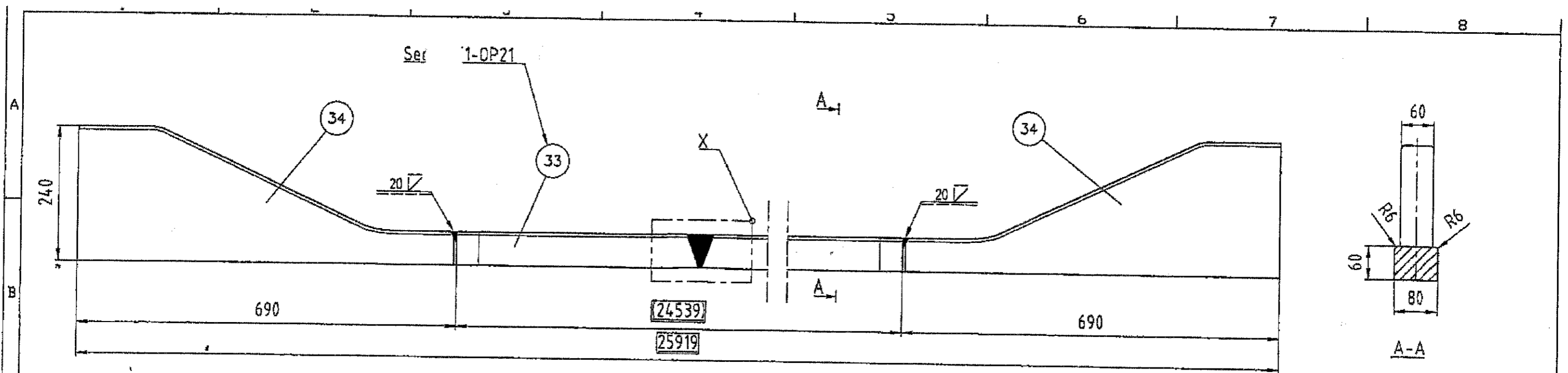
RT629

No.	Amount	Description	Specification	Weight
6	6	Socket set screw	DIN916-M12x12-45H-Zn45	0.04
2	2	Socket set screw	DIN914-M12x30-45H-Zn45	0.04
2	2	Washer	DIN126-A18-Zn45	0.011
2	2	Bolt	DIN935-M16x60-8.8-Zn45	0.117
4	4	Washer	DIN128-A13-Zn45	0.048
4	4	Hexagon socket head	DIN912-M12x30-8.8-A4-30	0.045
2	2	Grease nipple	DIN71412T1-AM10x1	0.05
2	2	Plate	PL1xP185/110 5235JRG2	0.1
2	2	Bearing	22222 CC/W33	7
1	1	SHAFT	LHJ4-100-OP5 A	22.5
2	2	WHEEL ADJUSTMENT P	LHJ4-100-OP3 D	2
2	2	BEARING HOUSING CD	LHJ4-100-OP2 D	3
2	2	BEARING HOUSING	LHJ4-100-OP1 D. Another mfr. im	7
2	2	SLEEVE	LHJ4-100-OP4 B (3)	0.7
1	1	RAIL WHEEL D400	LHJ4-100-OP6 A (1)	172
1	1	RAIL WHEEL D400	LHJ4-100-OP4 B (2)	142
1	1	RAIL WHEEL D400	LHJ4-100-OP4 B (1)	168

GENERAL TOLERANCES	ISO TOLERANCES	ISO TOLERANCES	ISO TOLERANCES	ISO TOLERANCES	ISO TOLERANCES	ISO TOLERANCES	ISO TOLERANCES	ISO TOLERANCES	ISO TOLERANCES
1	1	1	1	1	1	1	1	1	1

Englannin kielen teksti tasolla 92
 English language text on the level 92
 Saksan kielen teksti tasolla 93
 Germany's language text is on the level 93

LHJ4-100-
D2



Weight 2064 kg

RT629

No	Qty	Description	Specification	Material code	Scope	Sum Weight	Rev			
34	4	Plate	PL60x240x690	S235JRG2		196				
33	2	Flat rail	80x60x24.6m	S355J0G2		1868				
Appd		Uca	Date	08.09.2003	File	G440-PK-OP5.dwg	Scale	1:5	Size	A2
Check		TITLE		RAIL ASSEMBLY		Rev				
Drawn		M.Viertokangas		Drawing no.		G440-PK-OP5		Rev		A

THIS DOCUMENT IS THE ABSOLUTE PROPERTY OF KONECRANES VLC CORPORATION. THIS DOCUMENT MUST NOT BE COPIED WITHOUT THE WRITTEN PERMISSION OF KONECRANES VLC CORPORATION OR ITS PARENT COMPANY KONECRANES INTERNATIONAL CORPORATION. THE CONTENTS THEREOF MUST NOT BE DISCLOSED TO A THIRD PARTY NOR BE USED FOR ANY UNAUTHORIZED PURPOSE. CONFIDENTIALITY WILL BE PROTECTED.

WELDS AND TOLERANCES
See Drawing Gxxx-OP20
(Gxxx is Number of the Crane)

Rev	Date	Description	Drn	Appd	U-Drn
A	080903	APPROVED FOR PRODUCTION	MVI	Uca	



Drawing no. G440-PK-OP5