

A-A
1:10

RTG 39

Weight = 1146 kg

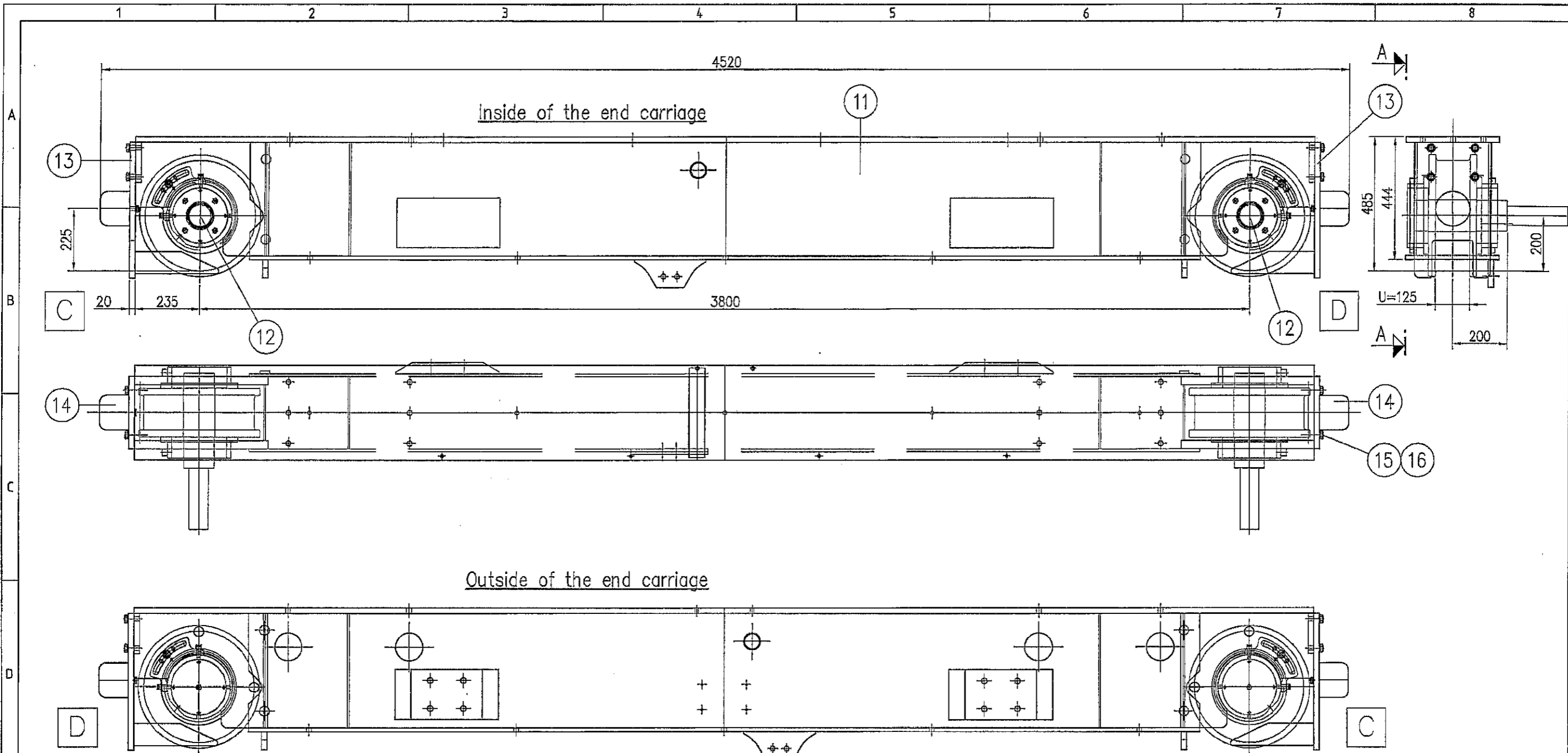
No	Qty	Description	Specification	Material code	Scope	Sum Weight	Rev
16	8	Washer	18 DIN126	Zn45		0	
15	8	Screw	M16x50 DIN933	8.8 Zn45		0	
14	2	Rubber end buffer	D125x105			0	
13	2	End plate	LV1173-EP			46	
12	2	Driving wheel D400	LHJ4-101-2-U86-75 (GEAR QM7)			366	
11	1	Welding of end carr	LV1173-B1B			734	
--	1	Machining of end ca	LV1173-B1A			0	

Appd	JL	Date	12.04.2010	File	LV1173-B1.dwg	Department		Size	A2
Check		TITLE						Scale	1:10
Drawn	T. Lehtonen	END CARRIAGE A-B							
KONECRANES		Drawing no.	LV1173-B1					Rev	A

This document and the information contained herein, is the exclusive property of Konecranes Plc and represents a non-public, confidential and proprietary trade secret that may not be reproduced, disclosed to third parties, altered or otherwise employed in any manner whatsoever without the express written consent of Konecranes Plc or Konecranes Finland Corporation. Copyright © 2010 Konecranes Plc. All rights reserved.

REQUIREMENTS for FABRICATION and MATERIALS
See Drawing Gxxx-OP20
(Gxxx is Number of the Crane)

A	12.04.10	Approved for production	TLe	JL	
Rev	Date	Description	Drn	Appd	M-film
Included in					



A-A
1:10

RTG 39

Weight = 1225 kg

No	Qty	Description	Specification	Material code	Scope	Sum	Weight	Rev
16	8	Washer	18 DIN126	Zn45		0		
15	8	Screw	M16x50 DIN933	8.8 Zn45		0		
14	2	Rubber end buffer	D125x105			0		
13	2	End plate	LV1173-EP			46		
12	2	Driving wheel D400	LHJ4-101-1-U125-075 (GEAR QM7)			408		
11	1	Welding of end carr	LV1173-B2B			771		
--	1	Machining of end ca	LV1173-B2A			0		

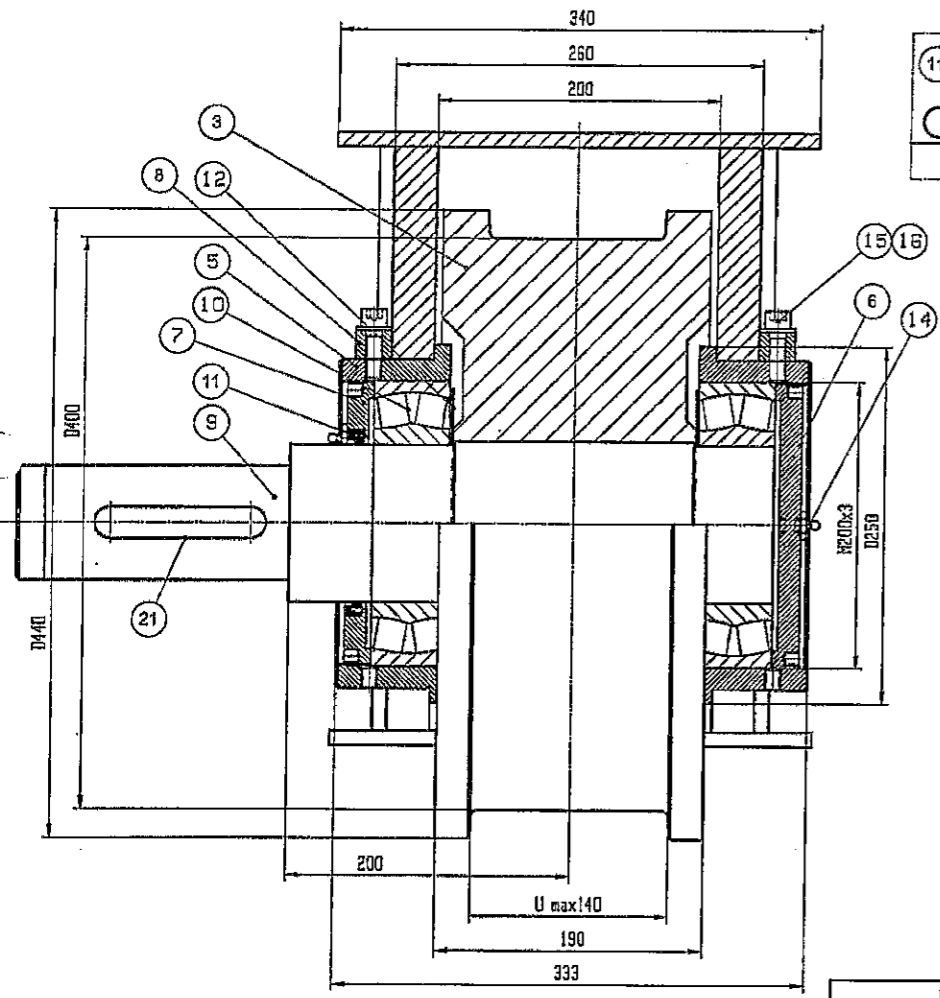
Appd	Jze	Date	12.04.2010	File	LV1173-B2.dwg	Department		Size	A2		
Check		TITLE						Scale	1:10		
Drawn	T. Lehtonen	END CARRIAGE C-D									
KONECRANES		Drawing no.	LV1173-B2							Rev	A

This document and the information contained herein, is the exclusive property of Konecranes Plc and represents a non-public, confidential and proprietary trade secret that may not be reproduced, disclosed to third parties, altered or otherwise employed in any manner whatsoever without the express written consent of Konecranes Plc or Konecranes Finland Corporation. Copyright © 2010 Konecranes Plc. All rights reserved.

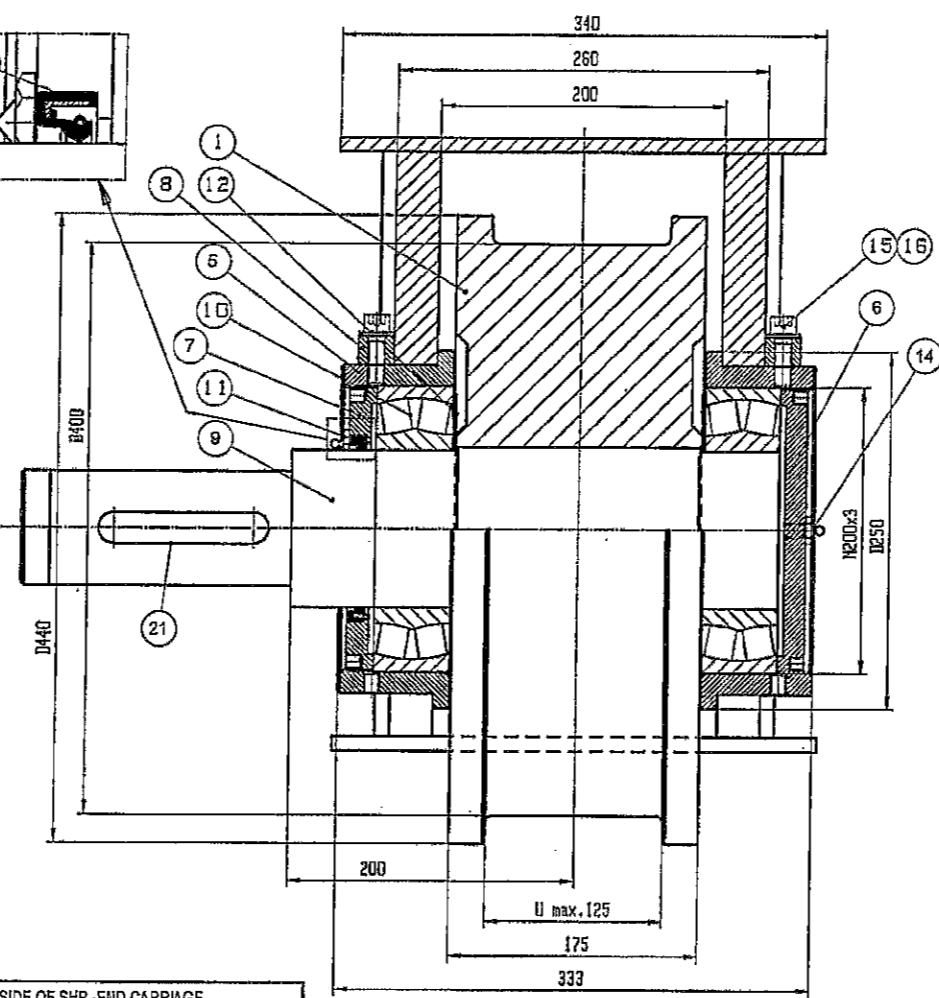
REQUIREMENTS for FABRICATION and MATERIALS
See Drawing Gxxx-OP20
(Gxxx is Number of the Crane)

A	12.04.10	Approved for production	TLe	Jze		
Rev	Date	Description	Orn	Appd	M-film	
		Included in				

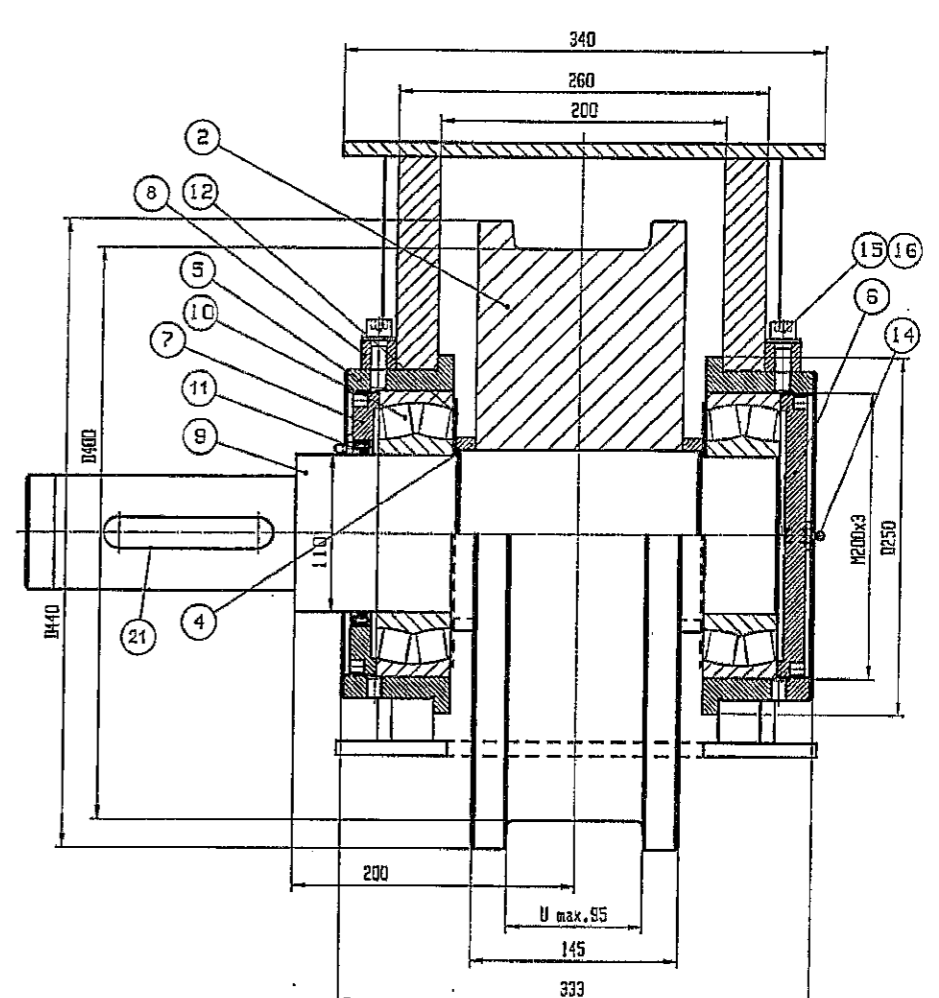
Rev	Description	Date	Revised by	Approved by
04	Rev.drw.sheet and partl., added fastening way	1999-10-19	Kovanen P.	
05	Added variant -3	2000-05-28	Nykulja K.	
06	Rev.bearing 22222 C was 222220 C	2000-06-18	Kovanen P.	
07	Changed drw.number was ...-1010 and rev.table	2000-10-25	Kovanen P.	
08	Changed revision E1 and partlist	2002-03-07	Kovanen P.	
09	Removed text SKF from Pos 10	2003-11-26	Pitka A.	
10	ADDED GEARS QM6, QM7 AND QM10	2004-12-01	Isankka	Isankka
11	TABLE UPDATED, DRAWING SHEET CHANGED	2006-09-19	Isankka	Isankka
12	POS. 17 ADDED	2007-05-31	Isankka	Isankka
13	POS. 17 UPDATED	2007-01-25	Isankka	Isankka
14	POS NO 21 ADDED & POS NO 19 UPDATED	2016-03-28	Isankka	Isankka
15	TEXT ADDED	2011-07-04	Isankka	Isankka



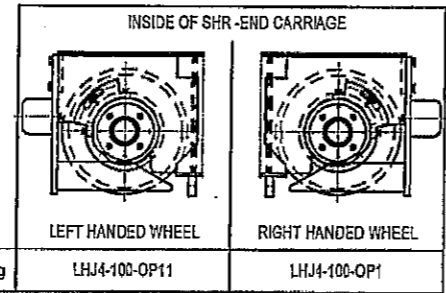
VAR.-3



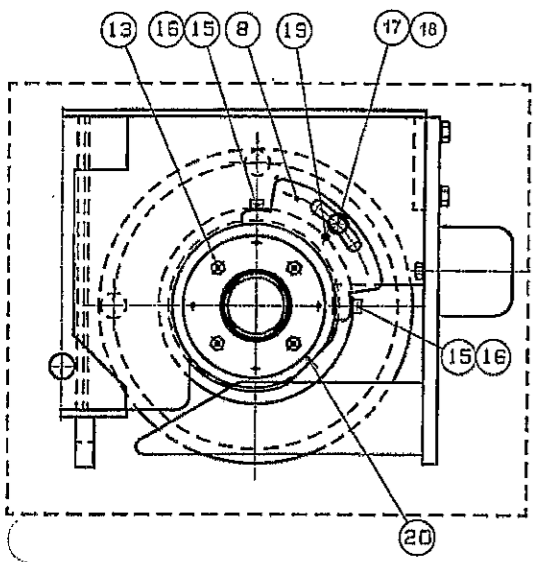
VAR.-1



VAR.-2



Minimum load rating values for bearing (item 10)
C₀ = 560kN, C = 408kN



GEAR CODE	DRAWING NUMBER	GEAR TYPE	WEIGHT OF WHEEL ASSEMBLY			KEY BxTxL
			VAR.-1	VAR.-2	VAR.-3	
065	LHJ4-101-065	QM6	235	212	242	16x10x140
075	LHJ4-101-075	QM7	238	215	245	20x12x160
101	LHJ4-101-101	GM10/QM10	244	222	251	25x14x200
102	LHJ4-101-102	GM10/QM10	248	226	255	--
141	LHJ4-101-141	HSCX140	238	215	245	20x12x160
142	LHJ4-101-142	HSCX140	240	217	247	--
181	LHJ4-101-181	HSCX180	243	221	250	25x14x180
182	LHJ4-101-182	HSCX180	247	225	254	--
201	LHJ4-101-201	HSCX200	248	225	255	28x16x200
202	LHJ4-101-202	HSCX200	254	231	261	--
221E	LHJ4-101-221E	HSCX225	249	225	256	28x16x200

ORDERING EXAMPLE: LHJ4-101-1-90-075

Rail wheel type

Variant F

Wheel groove width (mm)
WF=Wheel without flanges

Shaft code

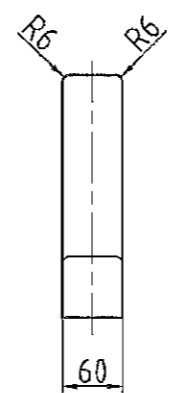
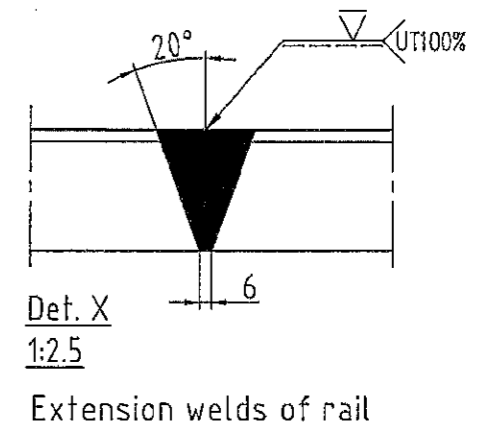
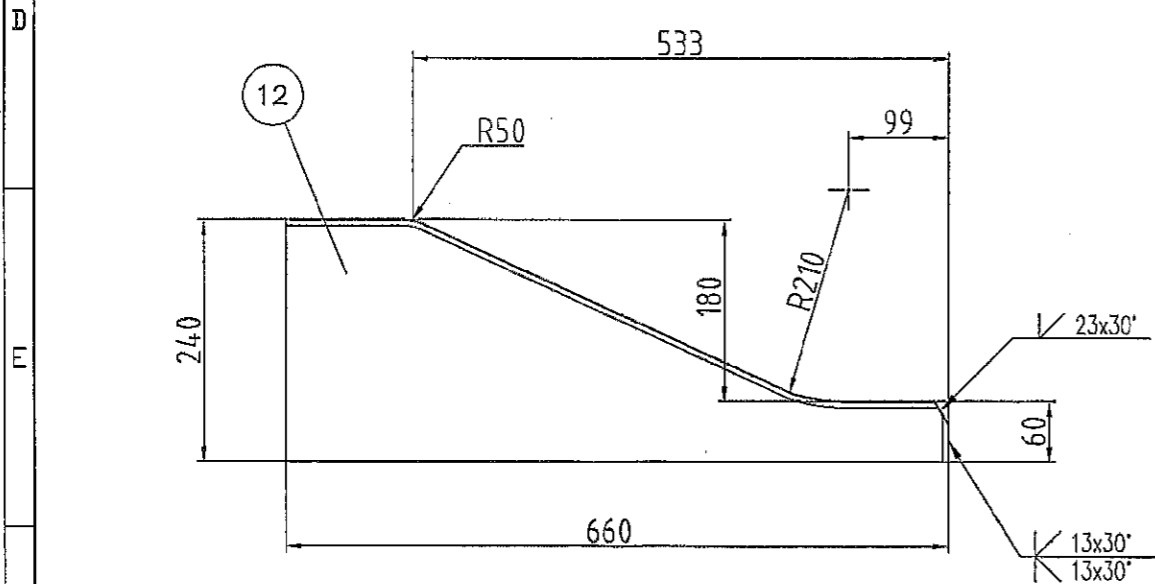
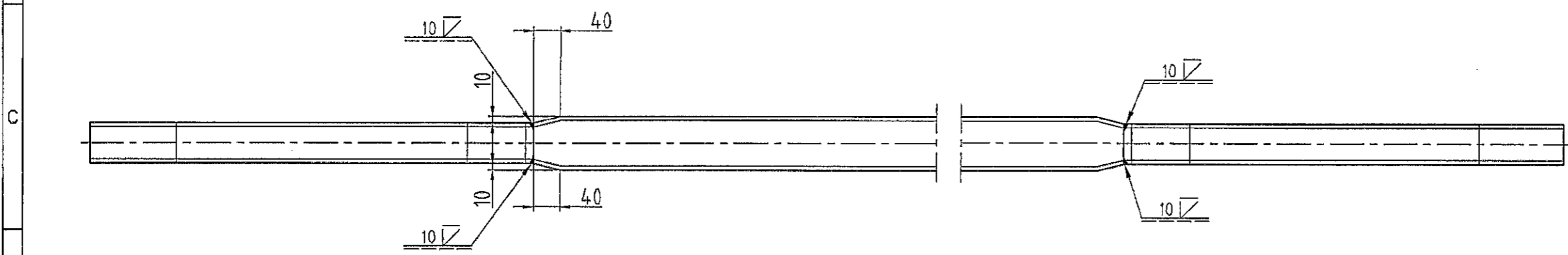
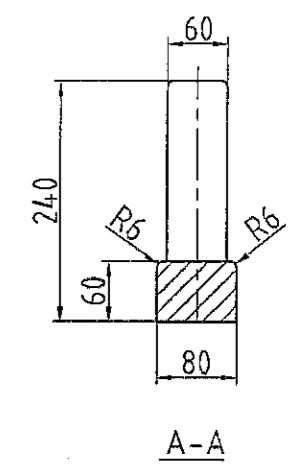
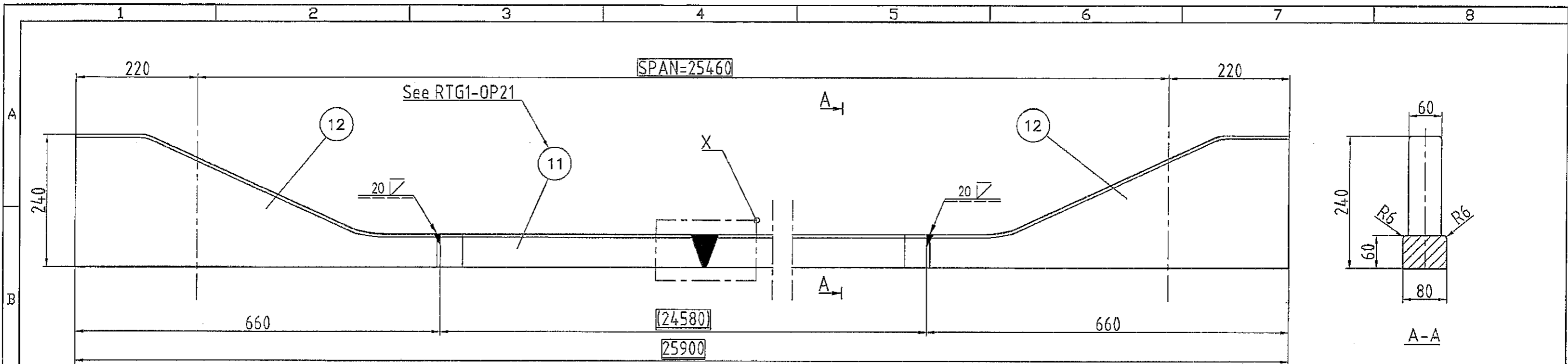
Wheel handedness MUST be mention in the order.

REQUIREMENTS for FABRICATION
See Drawing SHR-OP123

RTG 39

210-6	101-0	203-6	21	KEY	BxTxL DIN6885 TEIL 1; SEE TABLE	
1	1	1	21	Socket set scr	DIN916-M12x12-45H-Zn45	0.04
2	2	2	19	Socket set scr	DIN914-M12x30-45H-Zn45	0.04
2	2	2	18	Washer	DIN6340-M16-Zn	0.011
2	2	2	17	Screw	DIN933-M16x60-8.8-Zn45	0.117
4	4	4	16	Washer	DIN126-A13-Zn45	0.049
4	4	4	15	Hexagon socket	DIN912-M12x35-8.8-A4-60	0.043
1	1	1	14	Grease nipple	DIN71412T1-AM10x1	
4	4	4	13	Grease nipple	DIN71412T1-BM10x1	
2	2	2	12	Plate	PL1xD185/d110 S235JRG2	0.1
1	1	1	11	Radial seal	DIN3760-A110x130x12-NBR	
2	2	2	10	Bearing	22222 CC/W33	7
1	1	1	9	SHAFT OF RAIL	LHJ4-101-xy; See table	
2	2	2	8	WHEEL ADJUSTME	LHJ4-100-OP3	2
1	1	1	7	BEARING HOUSIN	LHJ4-101-OP1	2.5
1	1	1	6	BEARING HOUSIN	LHJ4-100-OP2	3
2	2	2	5	BEARING HOUSIN	See table	7
	2	4		SLEEVE	LHJ4-100-OP4 (3)	0.7
1		3		RAIL WHEEL D40	LHJ4-100-OP5 (1)	172
	1	2		RAIL WHEEL D40	LHJ4-100-OP4 (2)	141
		1		RAIL WHEEL D40	LHJ4-100-OP4 (1)	165

This document and the information contained herein, is the exclusive property of Konecranes Plc and represents a non-public, confidential and proprietary trade secret that may not be reproduced, disclosed to third parties, altered or therein employed in any manner whatsoever without the express written consent of Konecranes Plc or Konecranes Heavy Lifting Corporation, copyright © 2011 Konecranes Plc. All rights reserved.



RTG 39

Weight = 1018 kg

12	2	Plate	PL60x240x660	S355		92		
11	1	Flat rail	80x60x24,6m	S355		926		
No	Qty	Description	Specification	Material code	Scope	Sum Weight	Rev	
Appd			Date	File	Department	Size		
			17.01.2012	G1379-PKA4.dwg		A2		
Check			TITLE				Scale	
			RAIL ASSEMBLY				1:5	
Drawn								
		T. Lehtonen						
KONECRANES						Drawing no.	Rev	
						G1379-PKA4	A	

This document and the information contained herein, is the exclusive property of Konecranes Plc and represents a non-public, confidential and proprietary trade secret that may not be reproduced, disclosed to third parties, altered or otherwise employed in any manner whatsoever without the express written consent of Konecranes Plc or Konecranes Finland Corporation. Copyright © 2012 Konecranes Plc. All rights reserved.

REQUIREMENTS for FABRICATION and MATERIALS
See Drawing Gxxx-OP20
(Gxxx is Number of the Crane)

A	17.01.12	Approved for production	TLe		
Rev	Date	Description	Drn	Appd	M-Rev
Included in					