


RT627  
Weight = 1153.1 kg

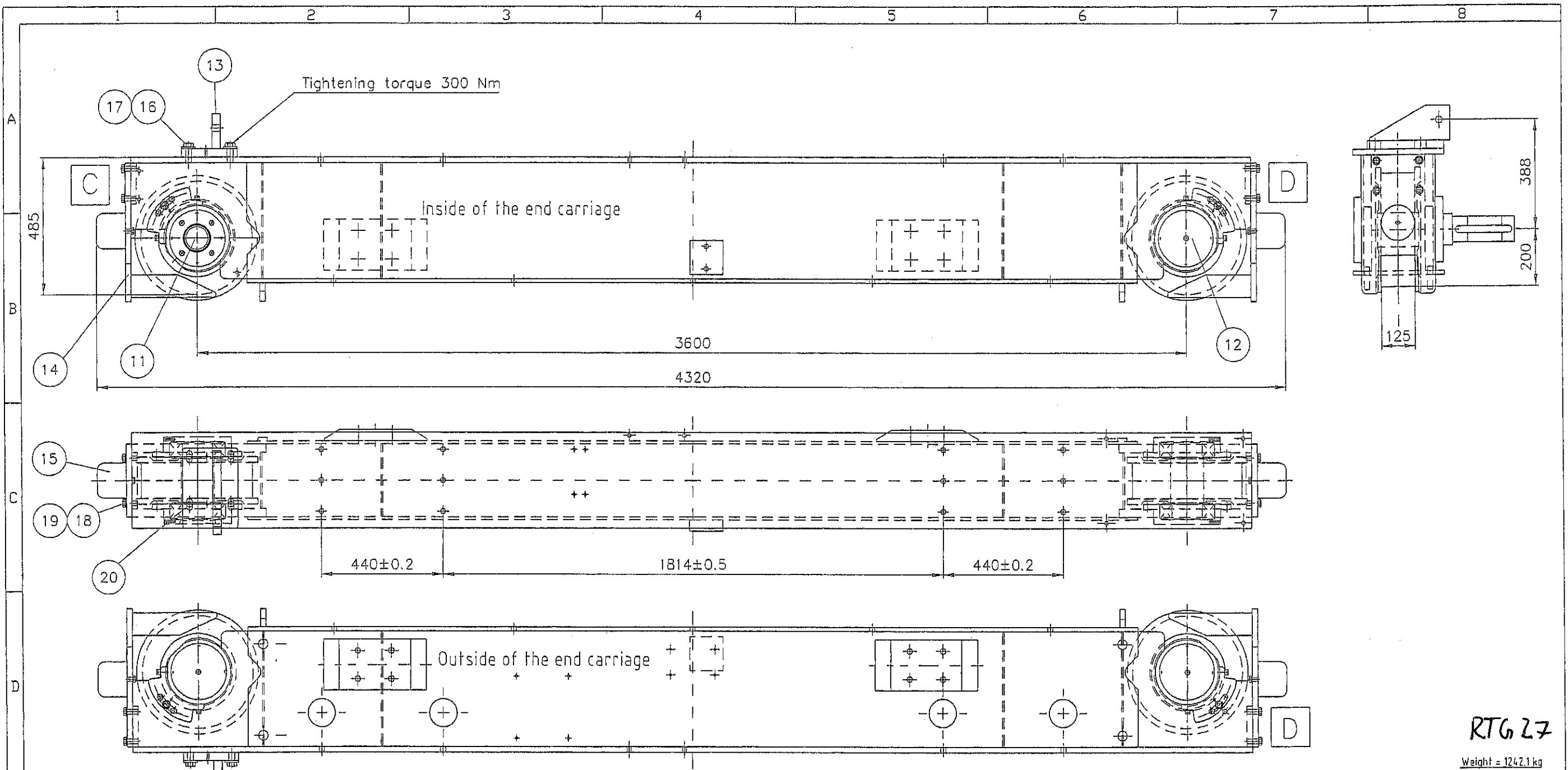
No	Qty	Description	Specification	Material code	Scope	Sum Weight	Rev
20	2	Tapper pin	8x55	DIN258		0	
19	1	Washer	18	DIN125 Zn45		0	
18	8	Screw	M16x50	DIN933-8.8 Zn		0	
17	4	Washer	21	DIN6340 Zn45		0	
16	4	Screw	M20x55	DIN933-8.8 Zn		0	
15	2	Rubber buffer	D125x105			0	
14	2	End plate	LV1050-EP			48	
13	1	Torque arm	LV1050-MT			19.3	
12	1	Idle wheel	LHJ4-100-U86-2			190	
11	1	Driving wheel	LHJ4-101-091-U86 (GM9)			200	
0	1	Welding of end c.	LV1050-B11B			695.8	
0	1	Machining of end c.	LV1050-B11A			0	

Appd	Date	File	Scale	Size
	24.02.2004	LV1050-B11.dwg	1:10	A2
Check	TITLE			Reg
	SH END CARRIAGE A-B			
Drawn	K. Lehtonen			U-film
				
	KONECRANES VLC CORP. FINLAND			
	Drawing no.			Rev
	LV1050-B11			A

THIS DOCUMENT IS THE ABSOLUTE PROPERTY OF KONECRANES VLC CORPORATION. THIS DOCUMENT MUST NOT BE COPIED WITHOUT THE WRITTEN PERMISSION OF KONECRANES VLC CORPORATION OR ITS PARENT COMPANY KCI KONECRANES INTERNATIONAL CORPORATION. THE CONTENTS THEREOF MUST NOT BE DISCLOSED TO A THIRD PARTY NOR BE USED FOR ANY UNAUTHORIZED PURPOSE. CONTRAVENTION WILL BE PROSECUTED.


WELDS AND TOLERANCES  
See Drawing Gxxx-OP20  
(Gxxx is Number of the Crane)

A	24.02.04	Approved for production	KLe		
Rev	Date	Description	Drn	Appd	M-film



RTG 27  
Weight = 1242.1 kg

No	Qty	Description	Specification	Material code	Scope	Sum Weight	Rev
20	2	Tapper pin	8x55	DIN258		0	
19	1	Washer	18	DIN125 Zn45		0	
18	8	Screw	M16x50	DIN933-8.8 Zn		0	
17	4	Washer	21	DIN6340 Zn45		0	
16	4	Screw	M20x55	DIN933-8.8 Zn		0	
15	2	Rubber buffer	D125x105			0	
14	2	End plate	LV1050-EP			4.8	
13	1	Torque arm	LV1050-MT			19.3	
12	1	Idle wheel	LHJ4-100-1-U125			216	
11	1	Driving wheel	LHJ4-101-091-U125 (GM9)			226	
0	1	Welding of end c.	LV1050-B22B			132.8	
0	1	Machining of end c.	LV1050-B22A			0	

Appd	Date	File	Scale	Size
	21.04.2004	LV1050-B22.dwg	1:10	A2
Check	TITLE			Reg
	SH END CARRIAGE C-D			
Drawn	M-Ilm			Rev
K. Lehtonen				A
 KONECRANES VLC CORP. FINLAND				Drawing no. LV1050-B22

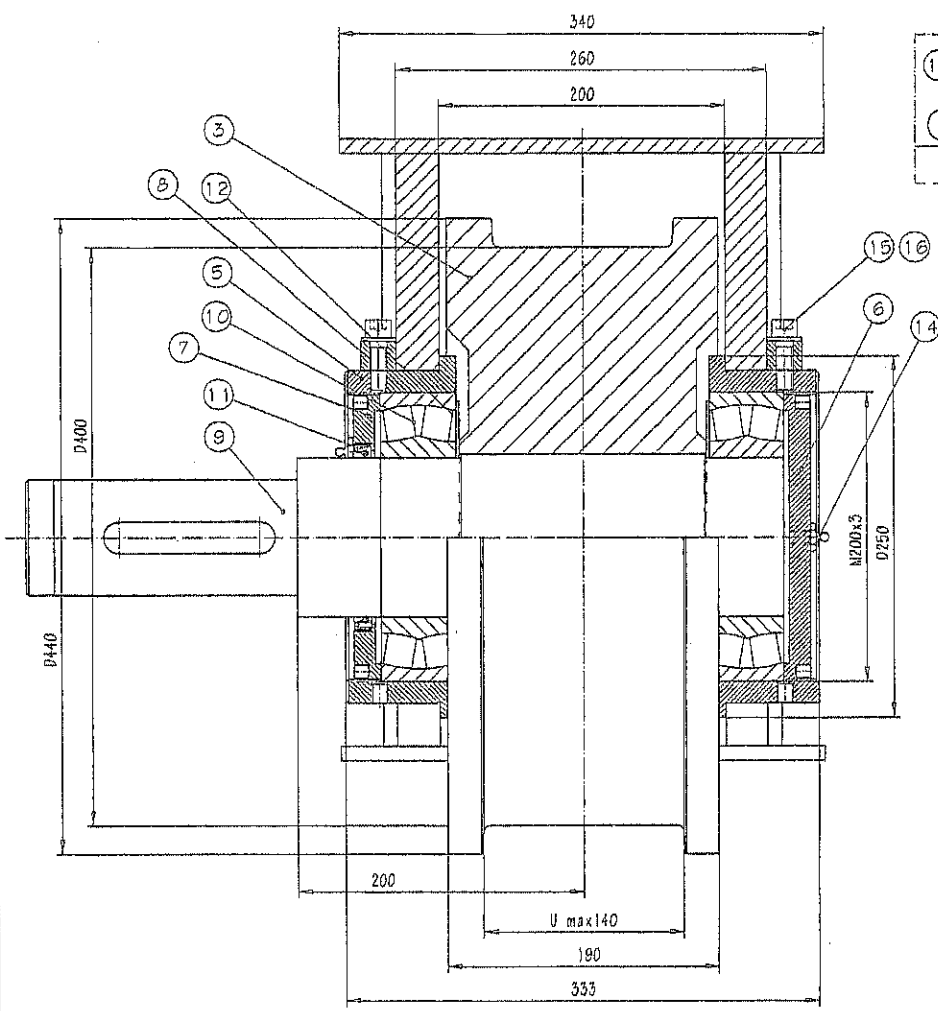
THIS DOCUMENT IS THE ABSOLUTE PROPERTY OF KONECRANES VLC CORPORATION. THIS DOCUMENT MUST NOT BE COPIED WITHOUT THE WRITTEN PERMISSION OF KONECRANES VLC CORPORATION OR ITS PARENT COMPANY KCI KONECRANES INTERNATIONAL CORPORATION. THE CONTENTS THEREOF MUST NOT BE DISCLOSED TO A THIRD PARTY NOR BE USED FOR ANY UNAUTHORIZED PURPOSE. CONTRAVENTION WILL BE PROSECUTED.

WELDS AND TOLERANCES  
See Drawing Gxxx-OP20  
(Gxxx is Number of the Crane)

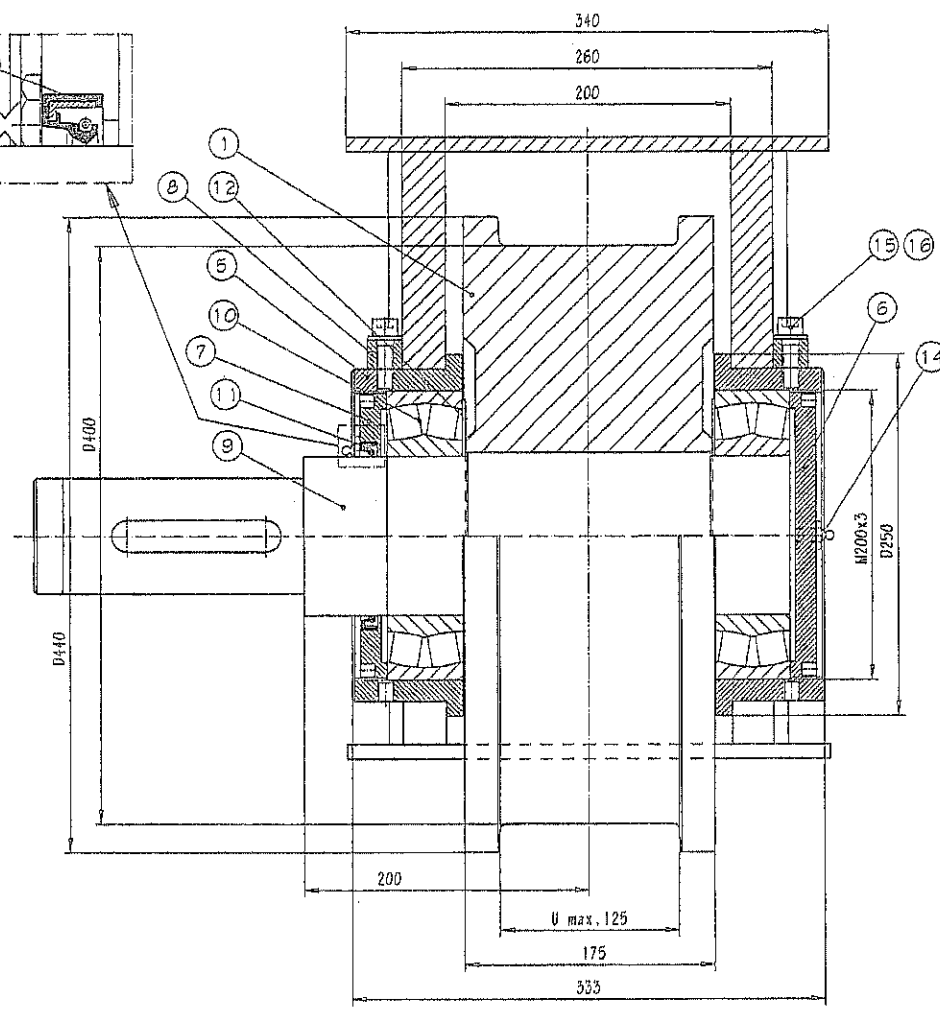
A	21.04.04	Approved for production	KLe	HL
Rev	Date	Description	Dm	Appd
				M-Ilm
Included in				

This document is the absolute property of KCI Konecranes Components Corp. This document must not be copied without the written permission of KCI Konecranes Components Corp. or its parent company KCI Konecranes International Corporation. The contents thereof must not be disclosed to a third party nor be used for any unauthorized purpose. Contravention will be prosecuted.

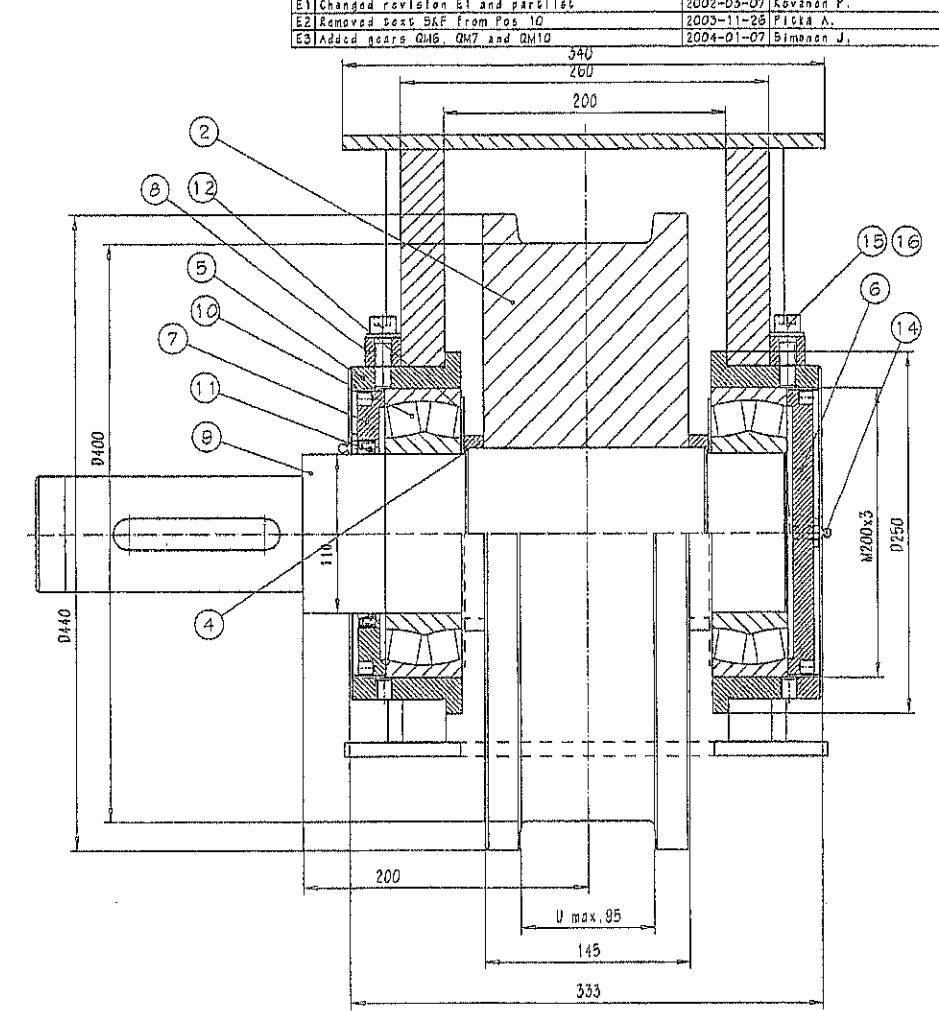
Rev.	Explanation	Date	Entered by	Drawn by
D1	Code 17 removed	19429	AME	
D2	German twin copy made	19721	T51	
D3	Code 07 removed	19830	PMY	
D4	Rev. drw. sheet and part. added fastening way	1999-10-18	Kovanen P.	
D5	Added variant -3	2000-05-25	Hyttelä K.	
D6	Rev. bearing 22222 C was 222220 C	2000-06-16	Kovanen P.	
D7	Changed drw. number was ...-1010 and rev. table	2000-10-25	Kovanen P.	
E1	Changed revision E1 and part list	2002-03-07	Kovanen P.	
E2	Removed text B&F from Pos 10	2003-11-26	Piöta A.	
E3	Added gears QM6, QM7 and QM10	2004-01-07	Simonsen J.	



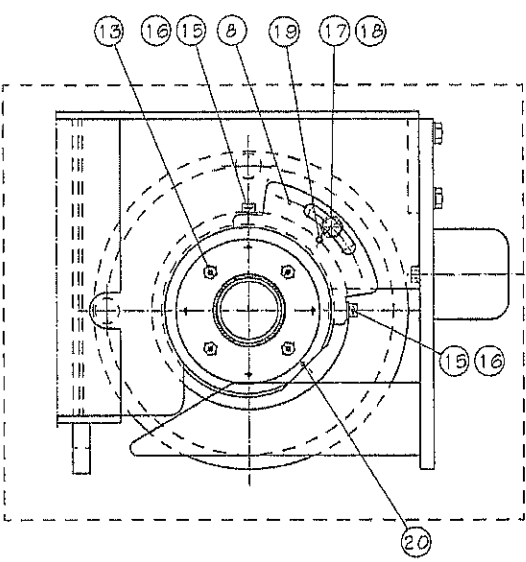
VAR.-3



VAR.-1



VAR.-2



Englannin kielinen teksti tasolla 92  
 English language text on the level 92  
 Saksan kielinen teksti tasolla 93  
 Germany's language text is on the level 93

Pos	Part	Material	QTY	Weight	Weight
051	LHJ4-101-OP2 D	GM5	262	208	
053	LHJ4-101-OP4 D	GM5	262	208	
061	LHJ4-101-OP2 D	GM6	263	209	
062	LHJ4-101-OP3 A	GM6E6	264	210	
063	LHJ4-101-OP4 A	GM6E5	265	211	
065	LHJ4-101-OP2 D	QM6	263	209	
071	LHJ4-101-OP2 D	QM7	269	215	
072	LHJ4-101-OP3 A	QM7E2	267	213	
073	LHJ4-101-OP4 A	QM7E1	269	215	
075	LHJ4-101-OP2 D	QM7	268	214	
081	LHJ4-101-OP2 D	GM8	270	216	
082	LHJ4-101-OP3 A	GM8E5	272	218	
083	LHJ4-101-OP4 A	GM8E7	271	217	
091	LHJ4-101-OP2 D	GM9	273	219	
092	LHJ4-101-OP3 A	GM9E6	275	221	
093	LHJ4-101-OP4 A	GM9E5	276	222	
101	LHJ4-101-OP2 D	GM10/QM10	273	219	
102	LHJ4-101-OP3 A	GM10E1	277	223	
103	LHJ4-101-OP4 A	GM10E3	271	217	
141	LHJ4-101-OP2 D	H5CX140	267	213	
142	LHJ4-101-OP3 A	H5CX140	269	215	
181	LHJ4-101-OP2 D	H5CX180	272	218	
182	LHJ4-101-OP3 A	H5CX180	276	222	
201	LHJ4-101-OP2 D	H5CX200	277	223	
202	LHJ4-101-OP3 A	H5CX200	282	228	
221	LHJ4-101-OP2 D	H5CX225	278	224	

218.7	181.1	203.7					
6	6	6	20	6	Socket set screw	DIN916-M12x12-45H-Zn45	0.04
2	2	2	19	2	Socket set screw	DIN914-M12x30-45H-Zn45	0.04
2	2	2	18	2	Washer	DIN126-A18-Zn45	0.011
2	2	2	17	2	Bolt	DIN933-M16x80-B.8-Zn45	0.117
4	4	4	16	4	Washer	DIN126-A18-Zn45	0.049
4	4	4	15	4	Hexagon socket head	DIN912-M12x35-B.8-A4-B0	0.043
1	1	1	14	1	Grease nipple	DIN71412T1-AM10x1	
4	4	4	13	4	Grease nipple	DIN71412T1-BM10x1	
2	2	2	12	2	Plate	PL1xD105/d110 S235JRG2	0.1
1	1	1	11	1	Radial seal	DIN5760-A110x130x12-NBR	
2	2	2	10	2	Bearing	22222 CC/W33	7
1	1	1	9	1	SHAFT OF RAIL WHEEL	LHJ4-101-OPx, See table	
2	2	2	8	2	WHEEL ADJUSTMENT P	LHJ4-100-OP3 D	2
1	1	1	7	1	BEARING HOUSING CO	LHJ4-101-OP1 D	2.5
1	1	1	6	1	BEARING HOUSING CO	LHJ4-100-OP2 D	3
2	2	2	5	2	BEARING HOUSING	LHJ4-100-OP1 D, Another mirr. im	7
			4	2	SLEEVE	LHJ4-100-OP4 B (3)	0.7
1			3	1	RAIL WHEEL D400	LHJ4-100-OP6 A (1)	172
1	1		2	1	RAIL WHEEL D400	LHJ4-100-OP4 B (2)	141
			1	1	RAIL WHEEL D400	LHJ4-100-OP4 B (1)	165

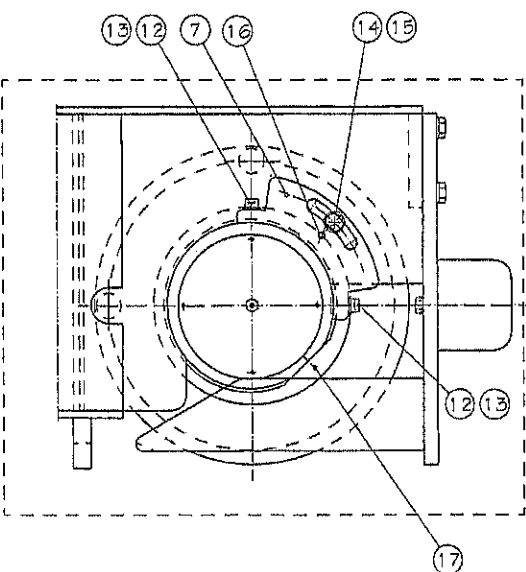
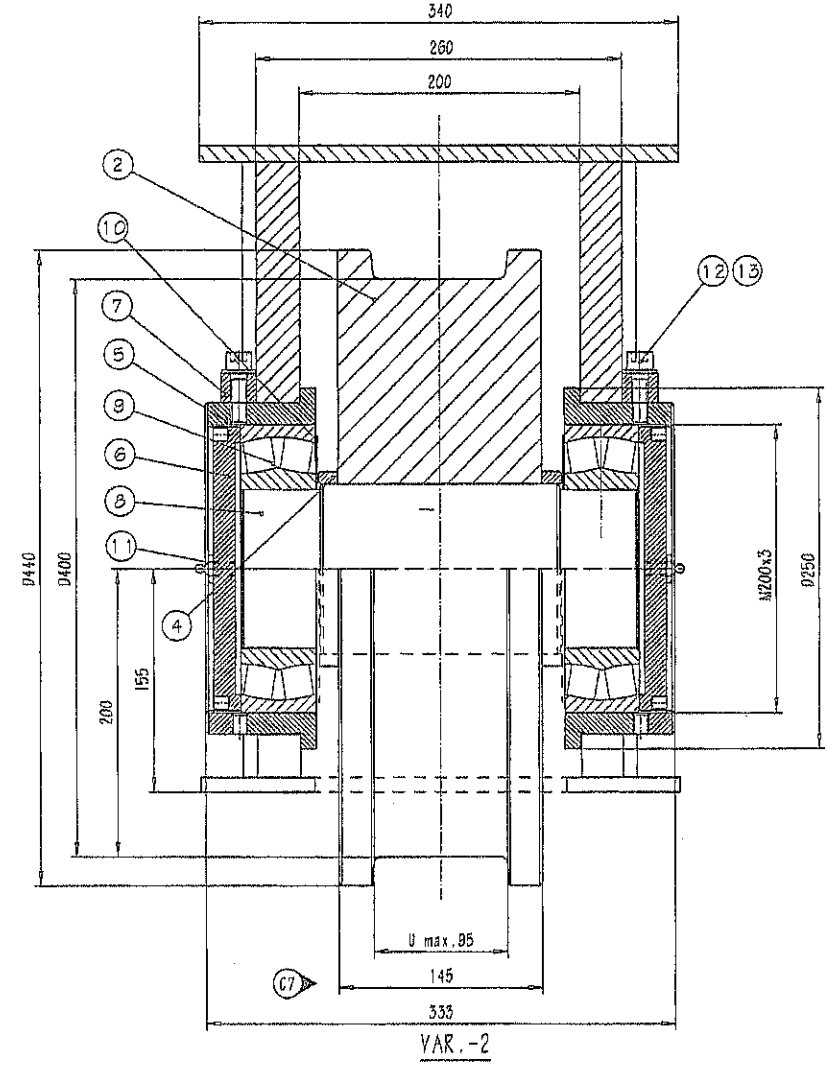
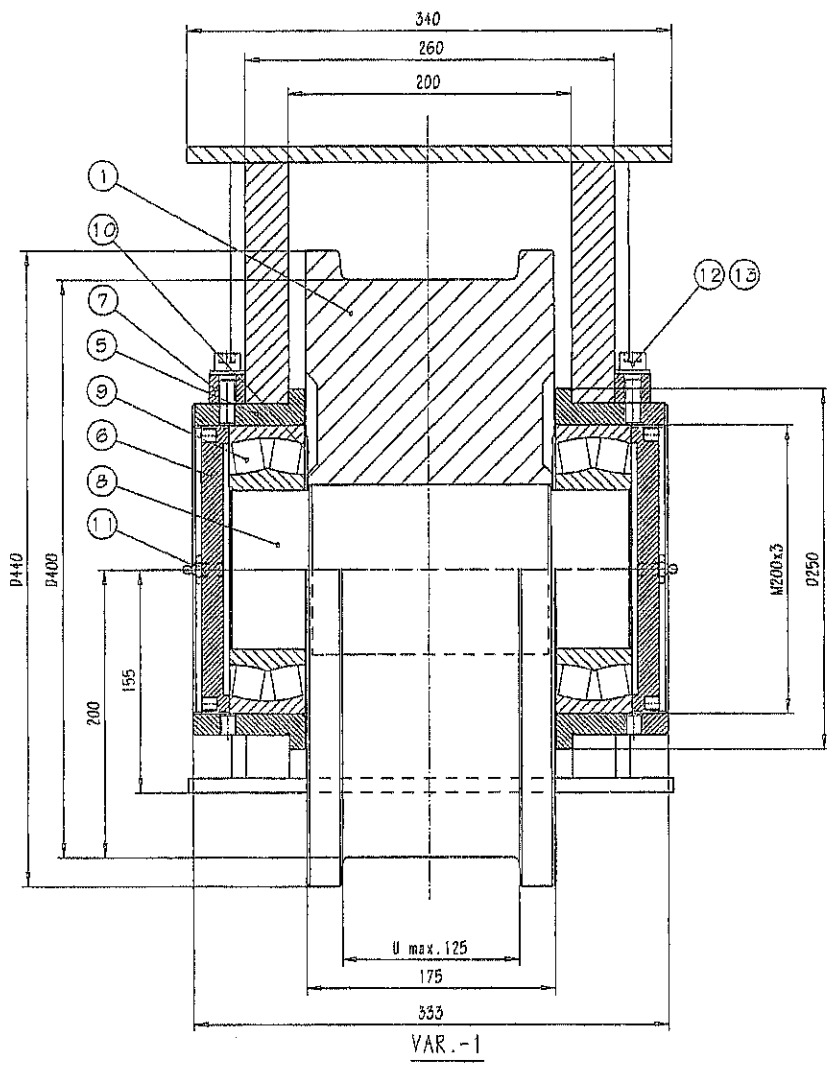
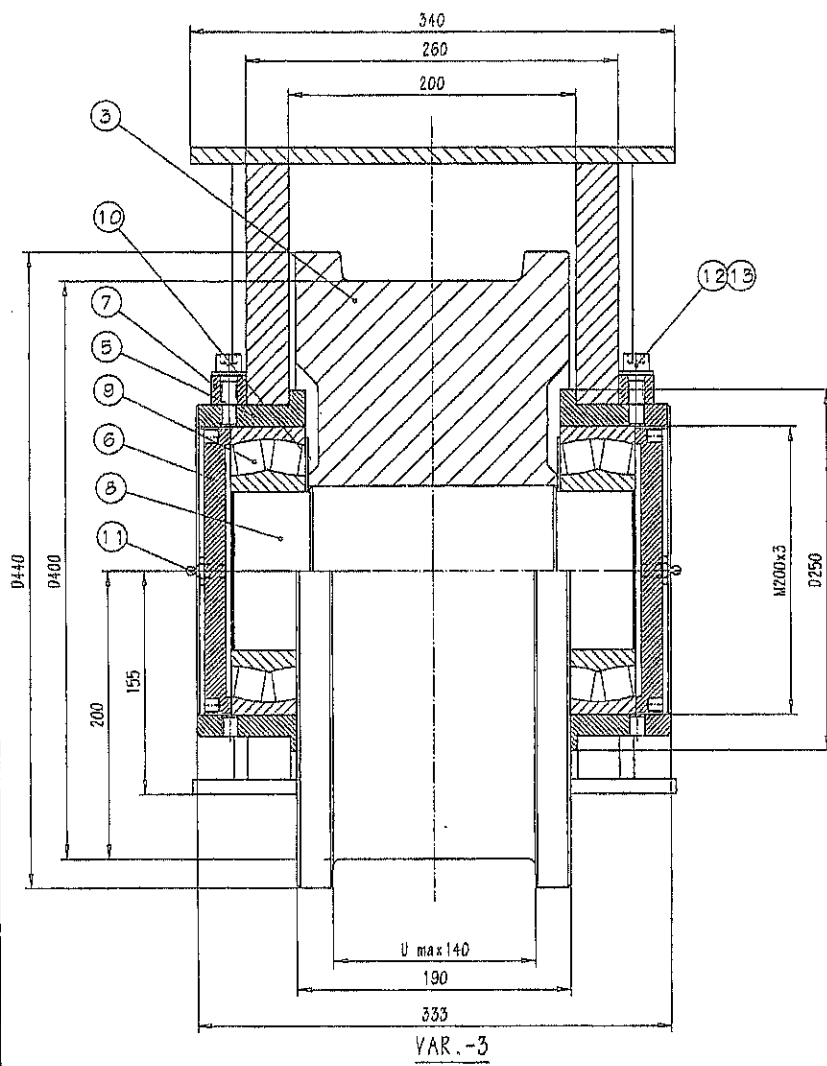
RTG27

LENGTH DIMENSIONS	MITTUSMITAT	10	15	20	30	40	50	60	80	100	150	200	300	400	500	600	800	1000	1500	2000
±0.10	±0.10	±0.15	±0.20	±0.30	±0.40	±0.50	±0.60	±0.80	±1.00	±1.50	±2.00	±3.00	±4.00	±5.00	±6.00	±8.00	±10.00	±15.00	±20.00	±30.00

ALU	Steel	KSu KNy	Polvunen R.	LHJ4-101-	SH-ENDTRUCK
3401	3401				
END	END				
KANTOPYÖRÄN KOKOONPANO					
End carriages					
LHJ4-101-					
E3					

This document is the absolute property of KCI Konecranes Components corp. This document must not be copied without the written permission of KCI Konecranes Components corp. or its parent company KCI Konecranes International Corporation. The contents thereof must not be disclosed to a third party nor be used for any unauthorized purpose. Contravention will be prosecuted.

Rev.	Explanation	Date	Revised by	Rev. No.
C1	Added var.-2	9/19	KPI	
C2	German twin copy made	8/21	TBI	
C3	Pos. number 7 was pos. 6	9/1	TBI	
C4	Revised drawing sheet and part list	1898-10-18	Kovanen P.	
C5	Added variants -3	2000-05-23	Nytilä K.	
C6	Changed drawing number was ...-1000	2000-10-25	Kovanen P.	
C7	Dim 145 was 125	2001-06-11	Kaura M.	
D1	Changed revision D1 and part list	2002-03-07	Kovanen P.	
D2	Removed test SKP from Pos 9	2003-11-26	Flitta A.	



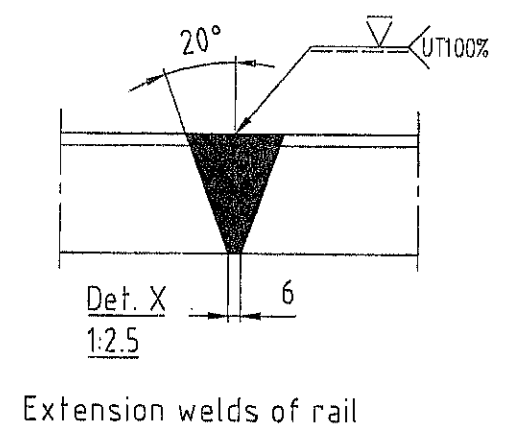
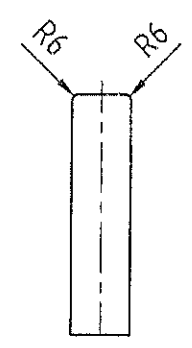
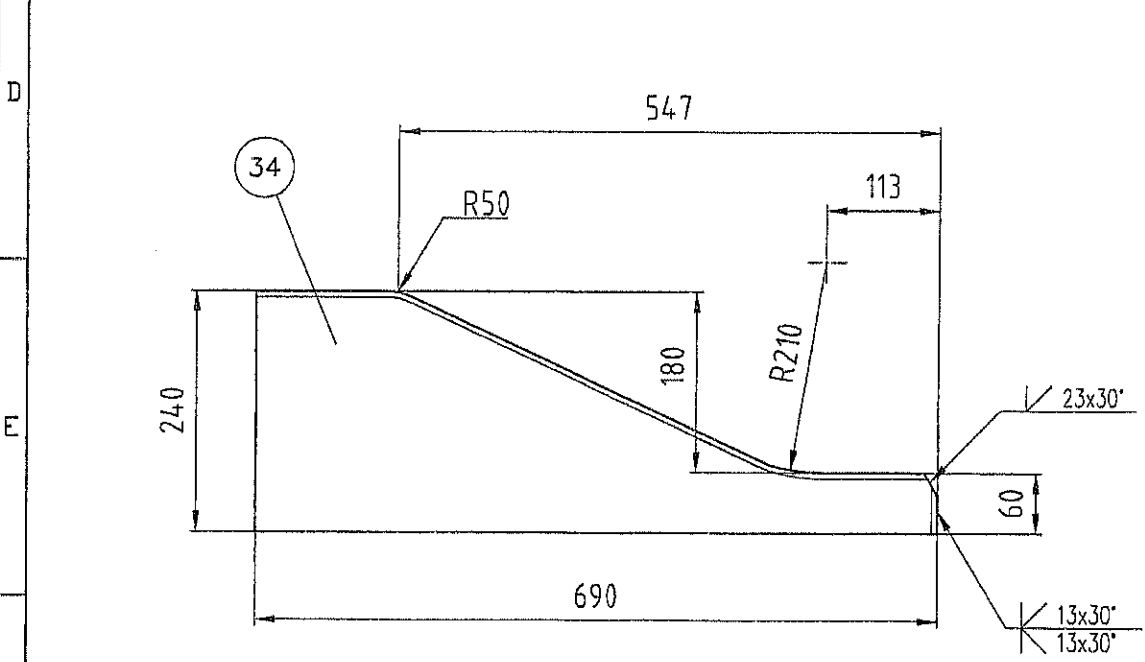
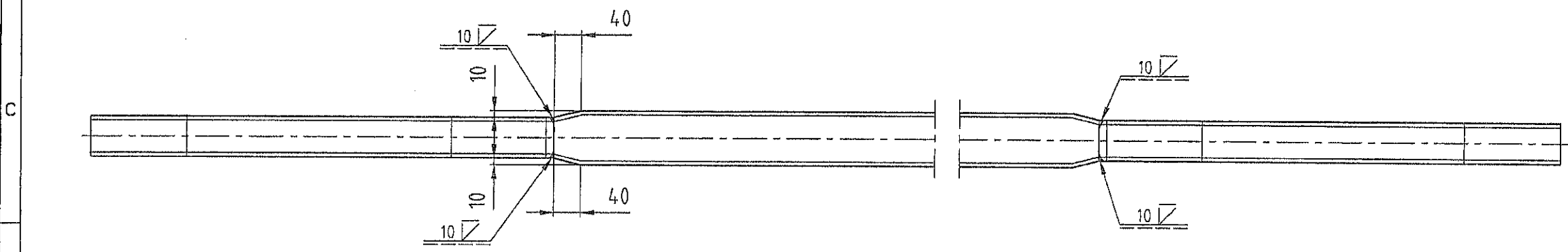
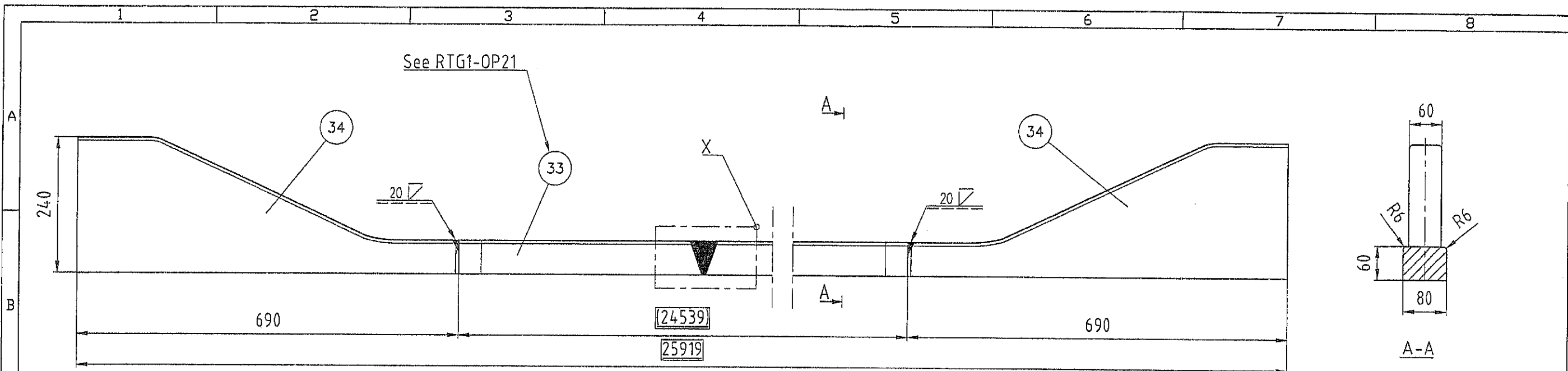
GENERAL TOLERANCES (YLEISPOLKKAUKSET)	ISO TOL. GR. 12	ISO TOL. GR. 14	ISO TOL. GR. 16	ISO TOL. GR. 18	ISO TOL. GR. 20	ISO TOL. GR. 22	ISO TOL. GR. 24	ISO TOL. GR. 26	ISO TOL. GR. 28	ISO TOL. GR. 30
LENGTH DIMENSIONS	H7/g6	H7/g6	H7/g6	H7/g6	H7/g6	H7/g6	H7/g6	H7/g6	H7/g6	H7/g6
DIAMETERS	H7/g6	H7/g6	H7/g6	H7/g6	H7/g6	H7/g6	H7/g6	H7/g6	H7/g6	H7/g6
ANGLES	M20x3	M20x3	M20x3	M20x3	M20x3	M20x3	M20x3	M20x3	M20x3	M20x3

RTG 27

QTY	UNIT	DESCRIPTION	REFERENCE	QTY	UNIT	DESCRIPTION	REFERENCE
6	6	6	17	Socket set screw	DIN916-M12x12-45H-Zn45	0.04	
2	2	2	16	Socket set screw	DIN914-M12x30-45H-Zn45	0.04	
2	2	2	15	Washer	DIN126-A18-Zn45	0.011	
2	2	2	14	Bolt	DIN933-M16x60-B-Zn45	0.117	
4	4	4	13	Washer	DIN126-A13-Zn45	0.048	
4	4	4	12	Hexagon socket head	DIN912-M12x30-B-A4-B0	0.043	
2	2	2	11	Grease nipple	DIN7141211-AM10x1	0.03	
2	2	2	10	Plate	PL1xD185/d110 B235JRG2	0.1	
2	2	2	9	Bearing	22222 CC/W33	7	
1	1	1	8	SHAFT	LHJ4-100-OP5 A	22.5	
2	2	2	7	WHEEL ADJUSTMENT P	LHJ4-100-OP3 D	2	
2	2	2	6	BEARING HOUSING CO	LHJ4-100-OP2 D	3	
2	2	2	5	BEARING HOUSING	LHJ4-100-OP1 D:Another mirr.im	7	
2	2	2	4	SLEEVE	LHJ4-100-OP4 B (3)	0.7	
1	1	1	3	RAIL WHEEL D400	LHJ4-100-OP6 A (1)	172	
1	1	1	2	RAIL WHEEL D400	LHJ4-100-OP4 B (2)	142	
1	1	1	1	RAIL WHEEL D400	LHJ4-100-OP4 B (1)	165	

Englannin kielinen teksti tasolla 92  
 English language text on the level 92  
 Saksan kielinen teksti tasolla 93  
 Germany's language text is on the level 93

ALU	CSB	KNY	Rolynon R	p_LHJ4-100-	SH-ENDTRUCKS
ALU	CSB	KNY	Rolynon R	p_LHJ4-100-	SH-ENDTRUCKS
SH-01					
SH-02					
SH-03					
SH-04					
SH-05					
SH-06					
SH-07					
SH-08					
SH-09					
SH-10					
SH-11					
SH-12					
SH-13					
SH-14					
SH-15					
SH-16					
SH-17					
SH-18					
SH-19					
SH-20					



Weight 2064 kg

RTG27

No	Qty	Description	Specification	Material code	Scope	Sum Weight	Rev			
34	4	Plate	PL60x240x690	S235JRG2		196				
33	2	Flat rail	80x60x24.6m	S355JOG2		1068				
Appd		<i>M. Viertokangas</i>	Date	08.09.2003	File	G440-PK-OP5.dwg	Scale	1:5	Size	A2
Check			TITLE		RAIL ASSEMBLY		Reg			
Drawn		M. Viertokangas	MATERIAL		KONECRANES VLC CORP. FINLAND		Drawing no.			
Rev			Date		Description		M-Item		Rev	A
Included in			Drn		Appd		U-Item			

THIS DOCUMENT IS THE ABSOLUTE PROPERTY OF KONECRANES VLC CORPORATION. THIS DOCUMENT MUST NOT BE COPIED WITHOUT THE WRITTEN PERMISSION OF KONECRANES VLC CORPORATION OR ITS PARENT COMPANY KCI KONECRANES INTERNATIONAL CORPORATION. THE CONTENTS THEREOF MUST NOT BE DISCLOSED TO A THIRD PARTY NOR BE USED FOR ANY UNAUTHORIZED PURPOSE. CONVICTION WILL BE PROSECUTED.

**WELDS AND TOLERANCES**  
See Drawing Gxxx-OP20  
(Gxxx is Number of the Crane)

Rev	Date	Description	Drn	Appd	U-Item
A	080903	APPROVED FOR PRODUCTION	MVI	<i>M. Viertokangas</i>	