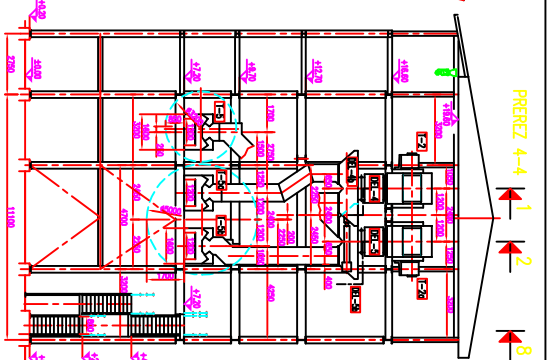
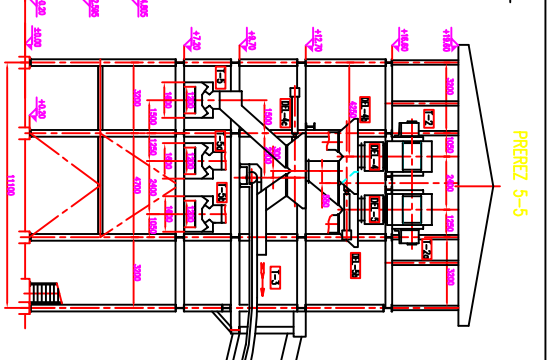


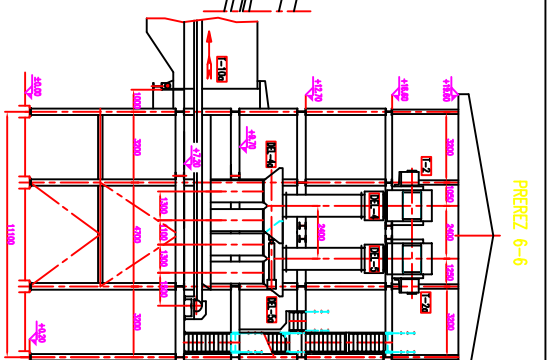
PREREZ 1-1



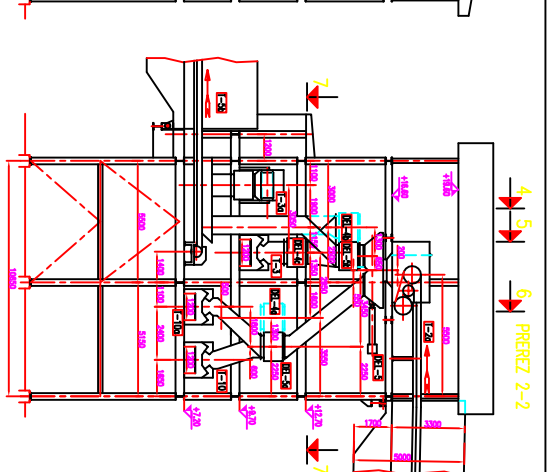
PREREZ 4-4



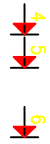
PREREZ 5-5



PREREZ 6-6

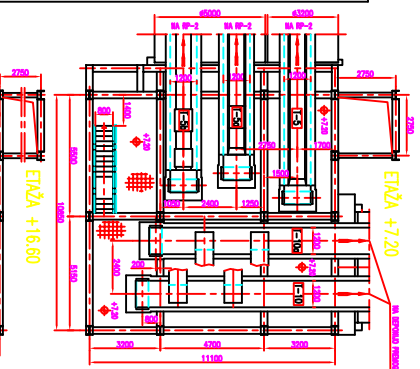


PREREZ 2-2

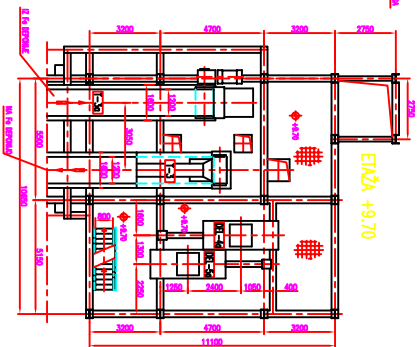


PREREZ 8-8

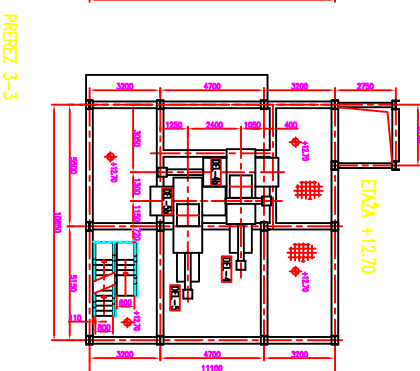
SWAGEZ



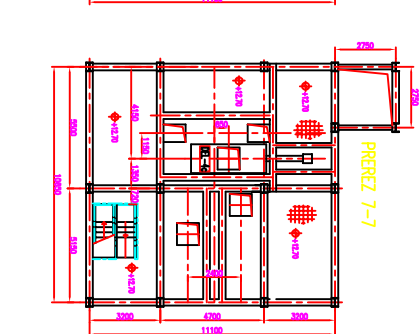
ENAŽA +7.20



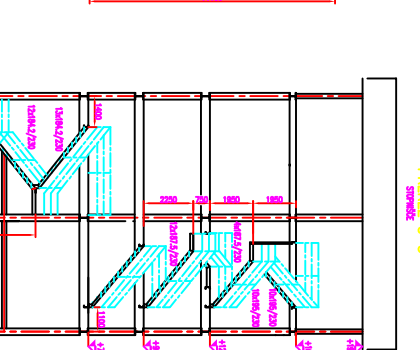
ENAŽA +9.70



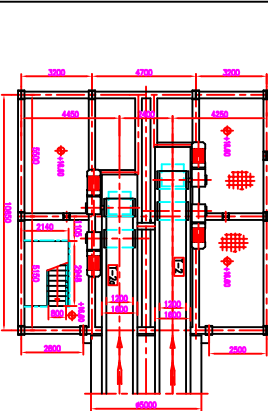
ENAŽA +12.70



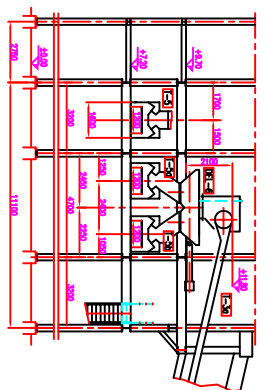
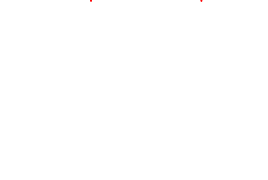
PREREZ 7-7



PREREZ 3-3



ENAŽA +16.60



DELOVNA KOPPIJA

<p>Projektant: TRINER PROJEKT Inženjersko arhitektonsko podjetje Ljubljana, Slovenija Tel: +386 (0)1 425 11 11 E-mail: triner@triner.si</p>		<p>Objekt: RADELIKA KOPPIJA RP-1 ENJEZ PREREZI</p>	
<p>Šifra objekta: P-131 Datum: 1-2005/01 Izdaja: 02</p>		<p>Šifra projekta: 1:100</p>	
<p>Projektant: TRINER PROJEKT Inženjersko arhitektonsko podjetje Ljubljana, Slovenija Tel: +386 (0)1 425 11 11 E-mail: triner@triner.si</p>		<p>Objekt: RADELIKA KOPPIJA RP-1 ENJEZ PREREZI</p>	
<p>Šifra objekta: P-131 Datum: 1-2005/01 Izdaja: 02</p>		<p>Šifra projekta: 1:100</p>	