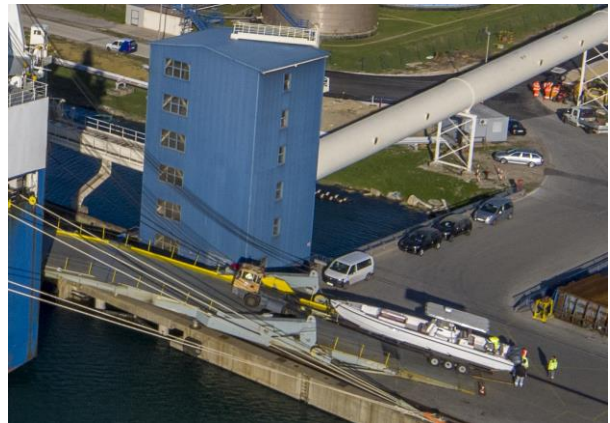


REGULAR DIRECT RO-RO/CAR CARRIER SERVICE BY MITSUI O.S.K. LINE FROM PORT OF KOPER TO CHINA & JAPAN

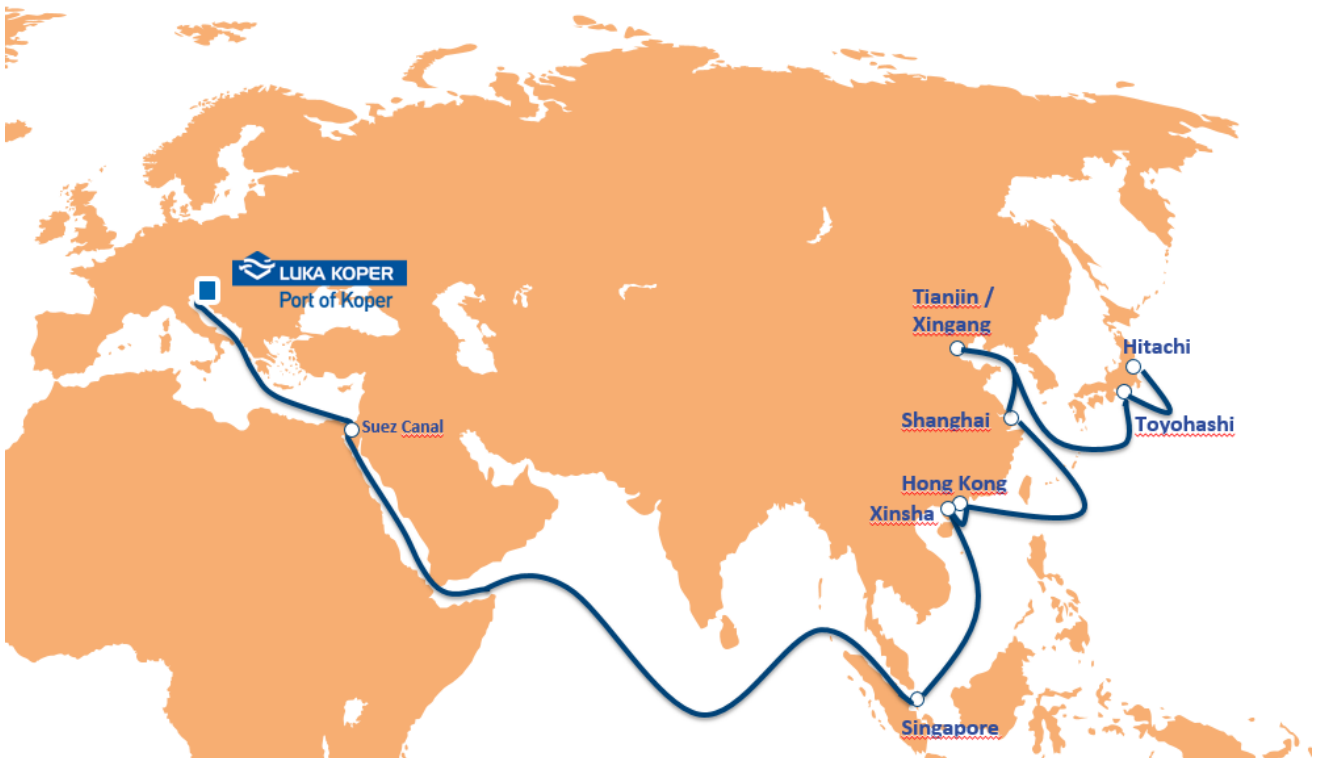


The regular **DIRECT WEEKLY RO RO/car carrier** service that has been introduced last year, offering direct connection from the Port of Koper to Singapore, Hong Kong (Guangzhou), Xinsha, Shanghai and Tianjin/Xingang has been now upgraded with a direct connection also to the ports of Toyohashi and Hitachi in **Japan**. In this service, the port of Singapore serves as a transshipment port to various other Southeast Asian destination, such as Thailand, Malaysia, Indonesia, Vietnam, Taiwan, Australia, New Zealand, etc. The vessels operated on this service can accept all sorts of **wheeled cargo** such as **cars, trucks, buses, and high & heavy units and other project cargo on MAFI trailers**, as well as **static cargo**.

The service has weekly departures from Koper and offers **Transit Times*** to direct ports of call as follows:

- Koper – **Singapore** abt. 18 days agw/wp
- Koper – **Hong Kong** abt. 21 days agw/wp
- Koper – **Xinsha** abt. 22 days agw/wp
- Koper – **Shanghai** abt. 25 days agw/wp
- Koper – **Toyohashi** abt. 30 days agw/wp
- Koper - **Hitachi** abt. 32 days agw/wp

*the transit times are taken from the carrier's internet pages and are only estimates, given without guarantee and subject to change without prior notice



The Port of Koper is constantly striving to add new maritime connections. We welcome all our partners to discover new possibilities in shipping rolling stock to these interesting destinations. Only enough cargo shipped on this new maritime connection will allow it to constantly call Koper and serve our hinterland markets, where increasing volumes of cargo is being shipped to Far East countries, especially machinery and project cargo.



For more information and cargo booking please contact:

INTERAGENT Shipping Agency, Ltd. Co.

Vojkovo nabrezje 30, 6000 Koper, Slovenia

Mr. Bojan Križ

Tel: +386-5- 664 1688

E-mail: intrag@intereuropa.si