

# Cold Chain Management

## Customised management of your refrigerated Supply Chain

Nives Dapa & Milan Vasiljevic  
23/05/2024

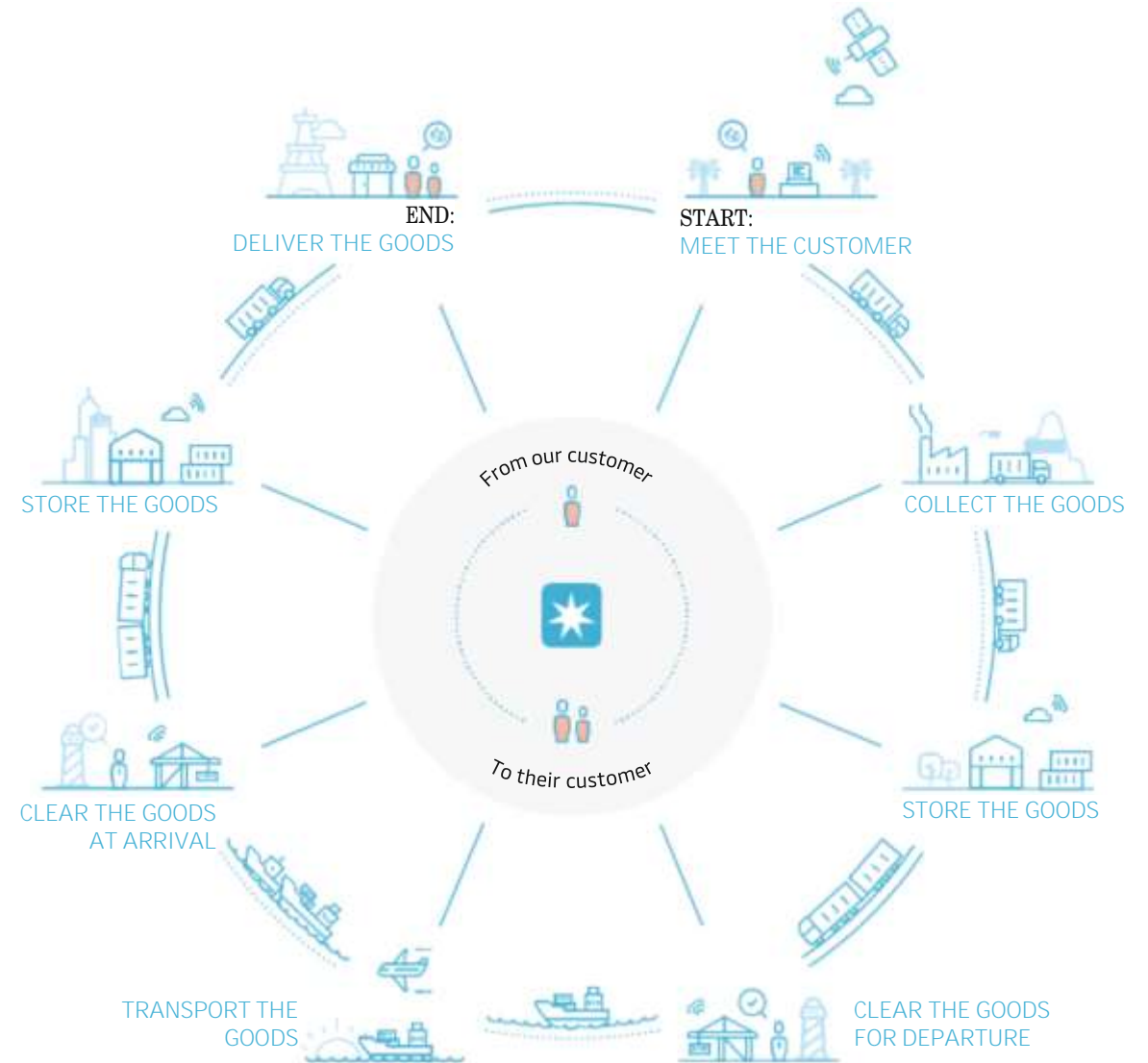


## OUR BUSINESS

# Connecting and simplifying global supply chains

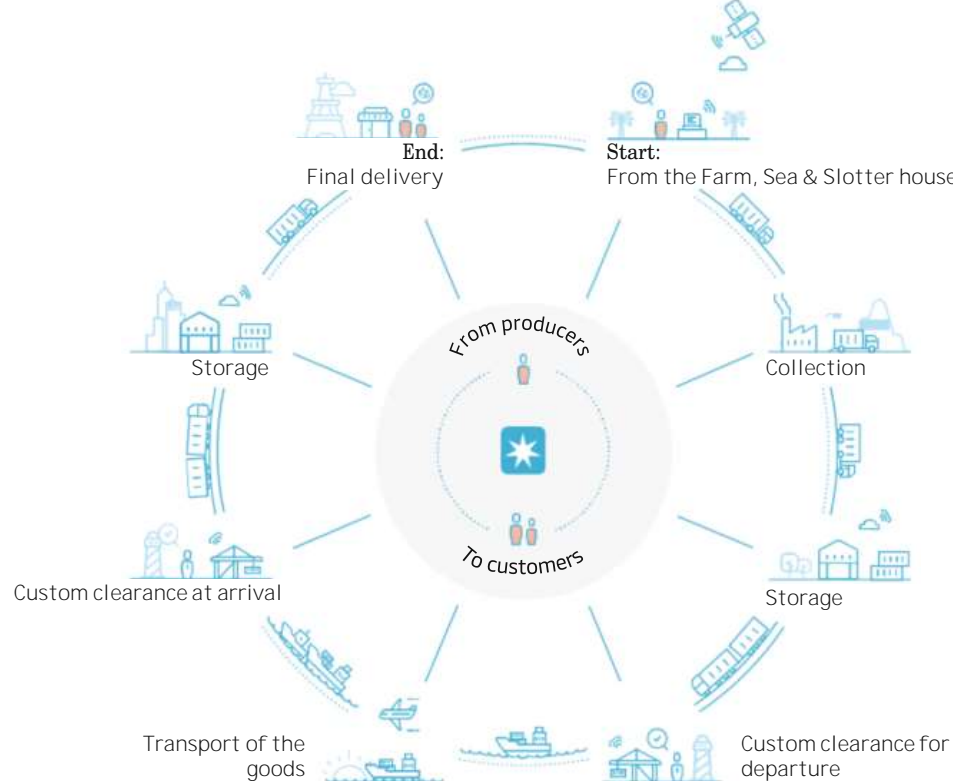
**A.P. Moller - Maersk enables its customers to trade and grow by transporting goods anywhere.**

Maersk works to provide customers with a simple end-to-end offering of products and services, seamless customer engagement and a superior end-to-end delivery network, taking the complexity out of global supply chains.



# Maersk Cold Chain Logistics is taking complexity out of your global supply chain and maximizing your product value and quality

*Main ambitions we see from our customers are...*



*...enabling you to trade and grow globally!*

Tailor-made, flexible and carrier-neutral **global solutions to support changing business needs**

Enabling more complex, dynamic physical flows **with a single provider accountable for the entire supply chain**

Upholding the cold chain integrity **for optimal product value and shelf-life**

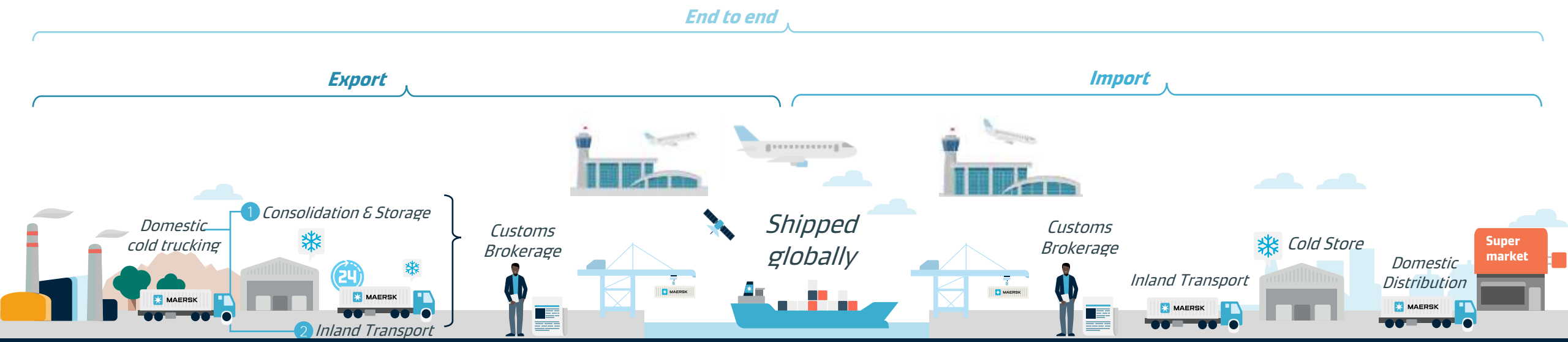
One-stop-shop reducing waste, risk and complexity, **allowing you to focus on your core business**

**Enhanced** visibility, performance and **supply chain optimization**

Full transparency **through digitally-supported harmonized view with strong data foundation**



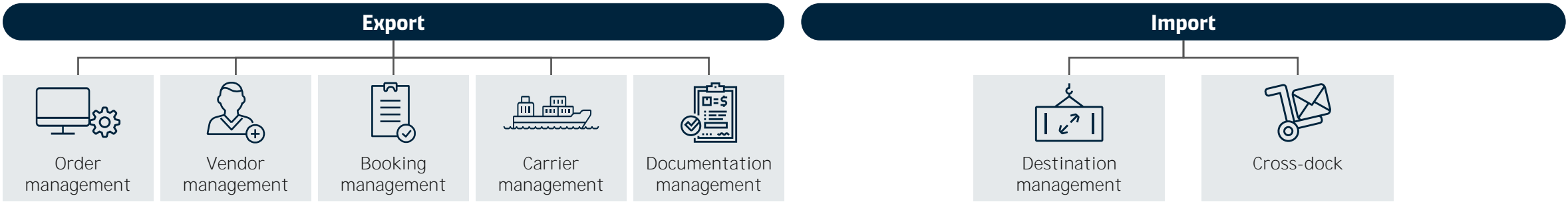
# Cold Chain Management is your one-stop-shop with distinct end-to-end asset-based integrated solutions meeting logistics needs



Experience a fully **integrated cold supply chain...**

... with **customized solutions** based on a **global** offering...

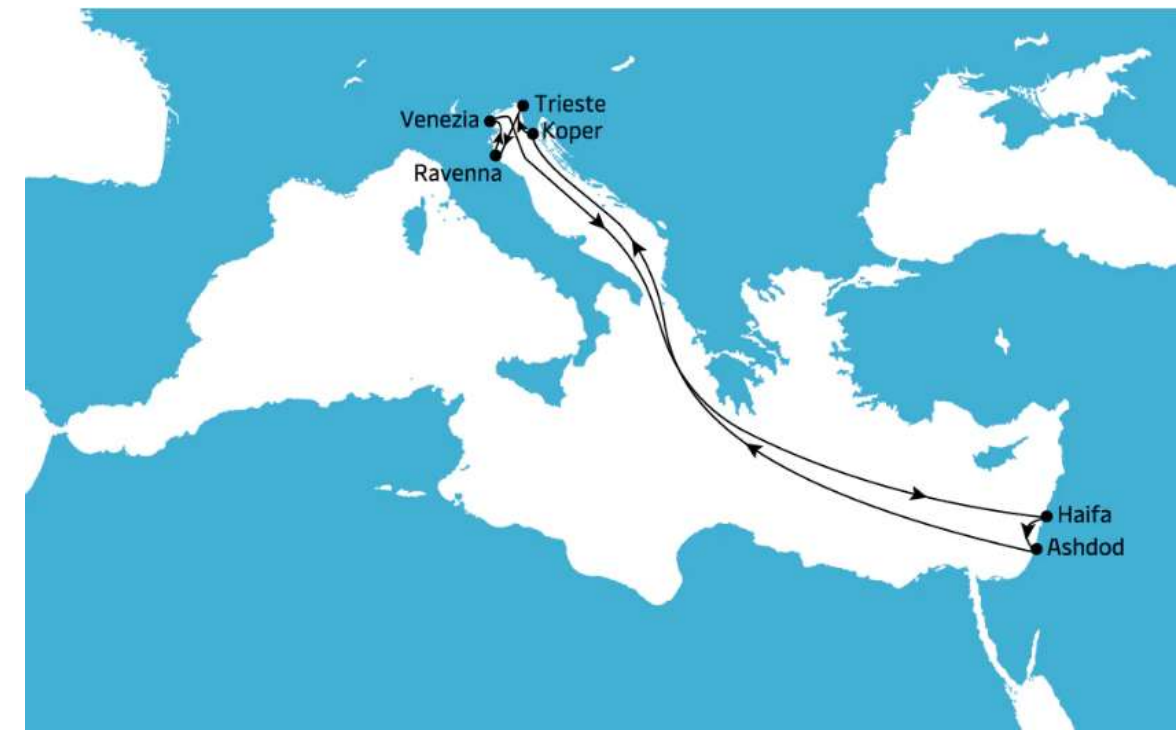
... including **own cold stores, carrier-neutral management** and supply chain **optimization**





# Cold Chain Management services

# SLI Adriatic Service A



## Timetable

Timetable for: Koper

Port call	Transit time	Arrives	Departs
Koper	-	-	Day 1 (Saturday)
Trieste	2 days	Day 3 (Saturday)	Day 3 (Sunday)
Ravenna	3 days	Day 4 (Monday)	Day 4 (Monday)
Venezia	4 days	Day 5 (Tuesday)	Day 5 (Tuesday)
Haifa	9 days	Day 10 (Sunday)	Day 10 (Sunday)
Ashdod	10 days	Day 11 (Monday)	Day 11 (Monday)
Koper	14 days	Day 15 (Saturday)	Day 15 (Saturday)

# SLI Adriatic Service B



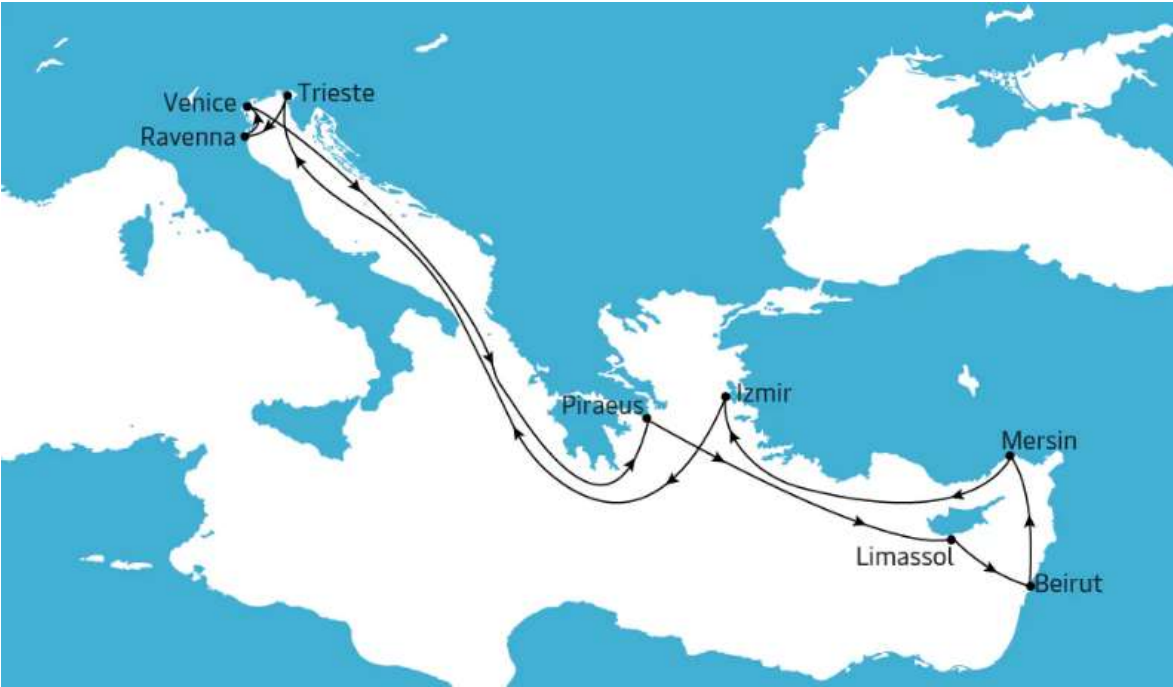
## Timetable

Timetable for: **Koper** ⌵

Port call	Transit time	Arrives	Departs
Trieste	-	-	-
Venezia	-	-	-
<b>Koper</b>	-	-	Day 3 (Sunday)
<b>Ravenna</b>	1 days	Day 4 (Sunday)	Day 4 (Sunday)
<b>Ambarli Port Istanbul</b>	4 days	Day 7 (Thursday)	Day 7 (Thursday)
<b>Gebze</b>	5 days	Day 8 (Thursday)	Day 8 (Thursday)
<b>Gemlik</b>	5 days	Day 8 (Friday)	Day 8 (Friday)
<b>Izmir</b>	6 days	Day 9 (Saturday)	Day 9 (Saturday)



# SLL Adriatic Sea D



Timetable

Timetable for: Trieste

Port call	Transit time	Arrives	Departs
Trieste	-	-	Day 1 (Monday)
Ravenna	2 days	Day 3 (Tuesday)	Day 3 (Tuesday)
Venezia	3 days	Day 4 (Wednesday)	Day 4 (Thursday)
Piraeus	7 days	Day 8 (Saturday)	Day 8 (Sunday)
Limassol	9 days	Day 10 (Tuesday)	Day 10 (Wednesday)
Beirut	12 days	Day 13 (Wednesday)	Day 13 (Friday)
Mersin	15 days	Day 16 (Monday)	Day 16 (Tuesday)
Izmir	18 days	Day 19 (Thursday)	Day 19 (Friday)
Trieste	21 days	Day 22 (Sunday)	Day 22 (Monday)



# AE12 Eastbound / Westbound



Timetable

Timetable for: Koper

Port call	Transit time	Arrives	Departs
Koper	-	-	Day 1 (Thursday)
Trieste	1 day	Day 2 (Thursday)	Day 2 (Friday)
Rijeka	2 days	Day 3 (Friday)	Day 3 (Sunday)
Trieste	4 days	Day 5 (Monday)	Day 5 (Thursday)
Port Said East	10 days	Day 11 (Sunday)	Day 11 (Tuesday)
King Abdullah	15 days	Day 16 (Thursday)	Day 16 (Friday)
Jeddah	16 days	Day 17 (Friday)	Day 17 (Saturday)
Singapore	29 days	Day 30 (Thursday)	Day 30 (Saturday)
Xingang	39 days	Day 40 (Monday)	Day 40 (Wednesday)
Dalian	42 days	Day 43 (Wednesday)	Day 43 (Thursday)
Busan	45 days	Day 46 (Saturday)	Day 46 (Monday)
Ningbo	50 days	Day 51 (Thursday)	Day 51 (Friday)
Shanghai	52 days	Day 53 (Sunday)	Day 53 (Monday)



# Adriatic Gateway Multimodal solution – Fresh to EU

Solution and Capabilities

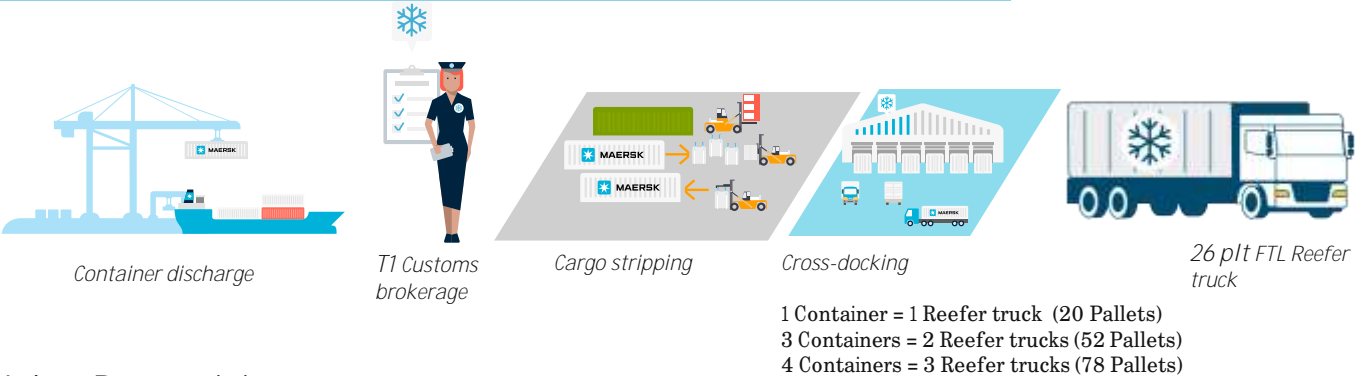
- Apple & FMCG
- FTL capacity: available
- Cold Storage
- Cross-Dock

Value Added Services

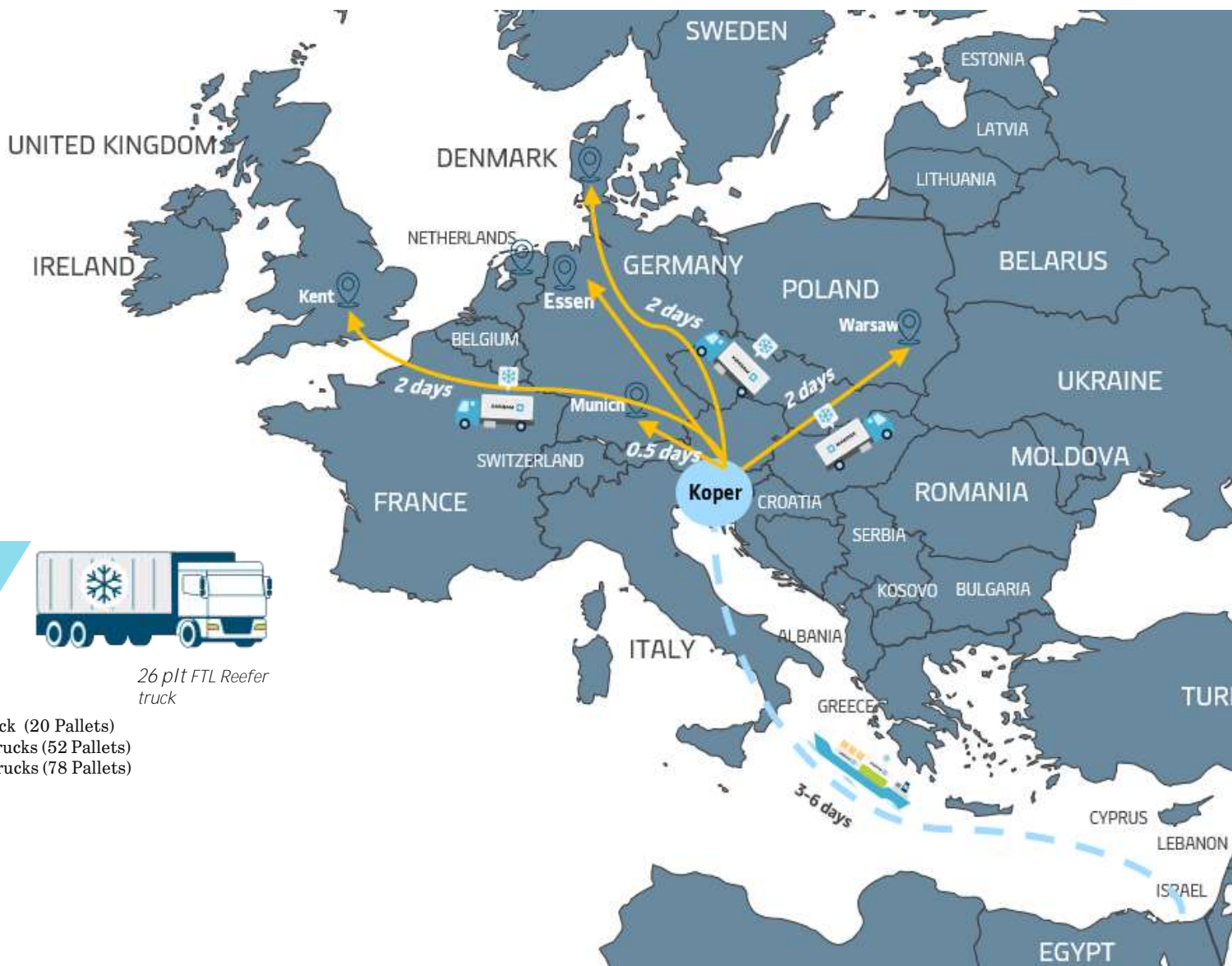
- Inspection / Quality check
- Labelling
- Palletizing

CCS – E2E

- Origin service (Vendor Management, Quality inspection, IHE, CHB, Documentation management, Exception management, Multicarrier)
- Koper: T1 - Visual inspection - Cross-docking - FTL reefer truck



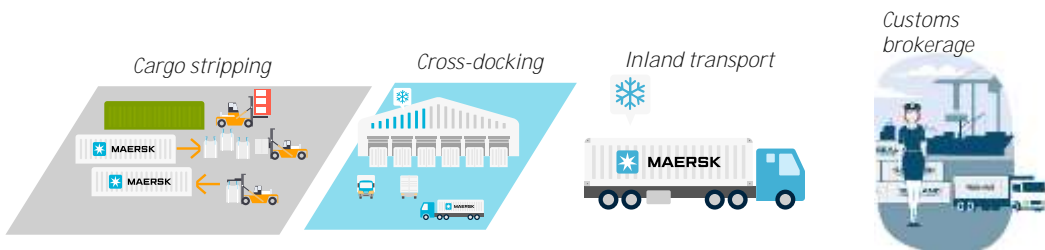
- Value Proposition
- E2E One-stop-shop solution
  - Shorter access to North Europe & CEE markets
  - Lower handling and storage costs
  - Avoiding port congestion & bottlenecks



# Adriatic gateway Multimodal solution – Polish Apples

## Solution and Capabilities

- Apple & FMCG
- FTL capacity: Limited
- Cold Storage
- Cross-Dock
- Customs clearance
- Space & equipment
- Inland Haulage



Time to  
Market



Accessibility

How can we build over the current setup?

Can you identify other origins that can use the same solution?

What is missing in the current setup to reach different customer segments?



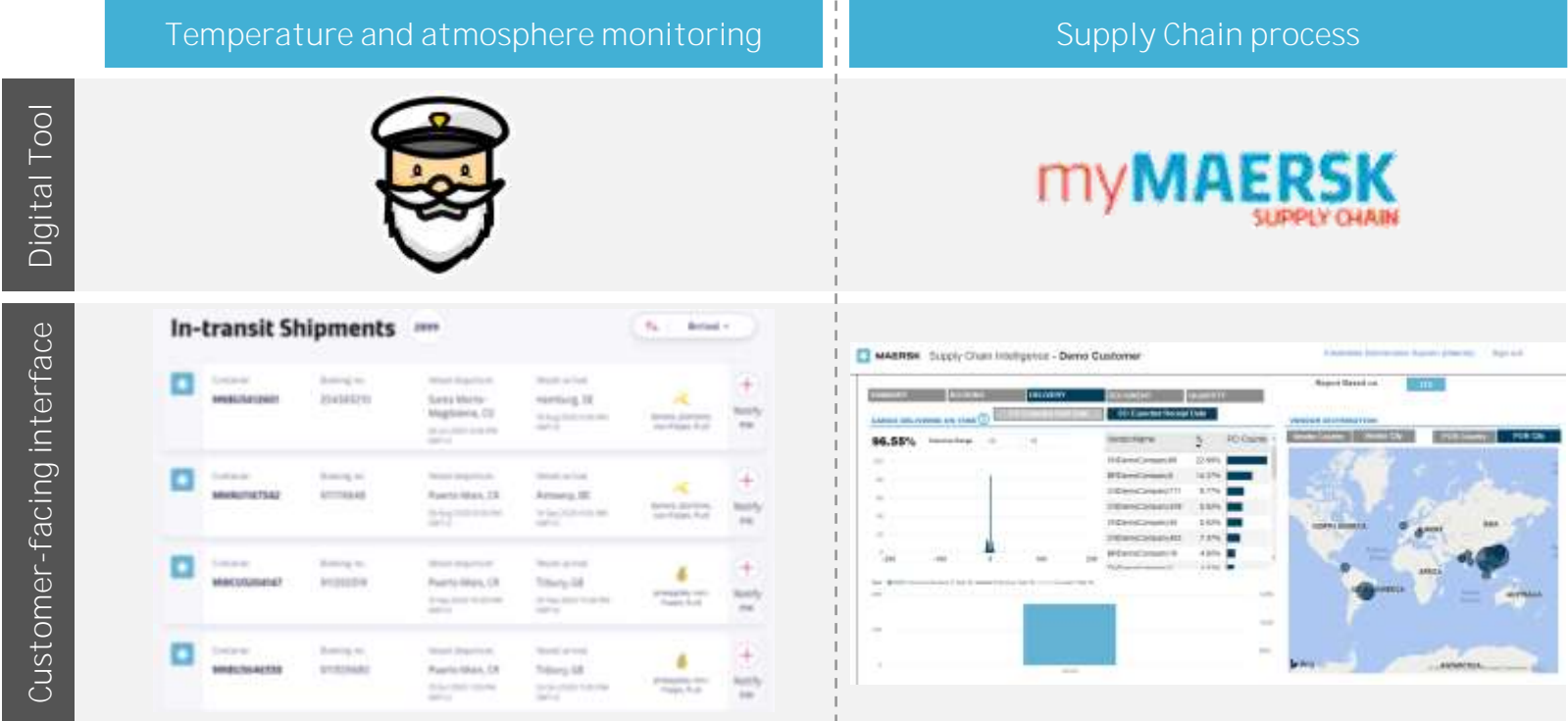
MAERSK



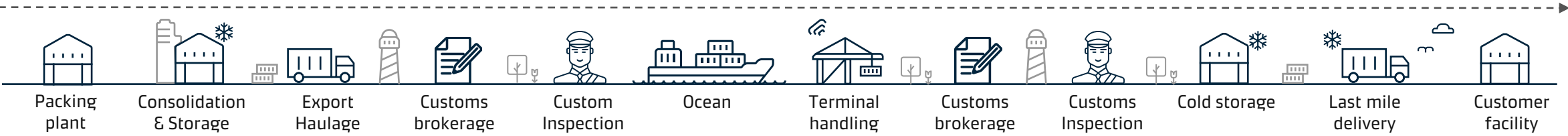
Providing visibility of your  
product at any point in it's  
supply chain journey



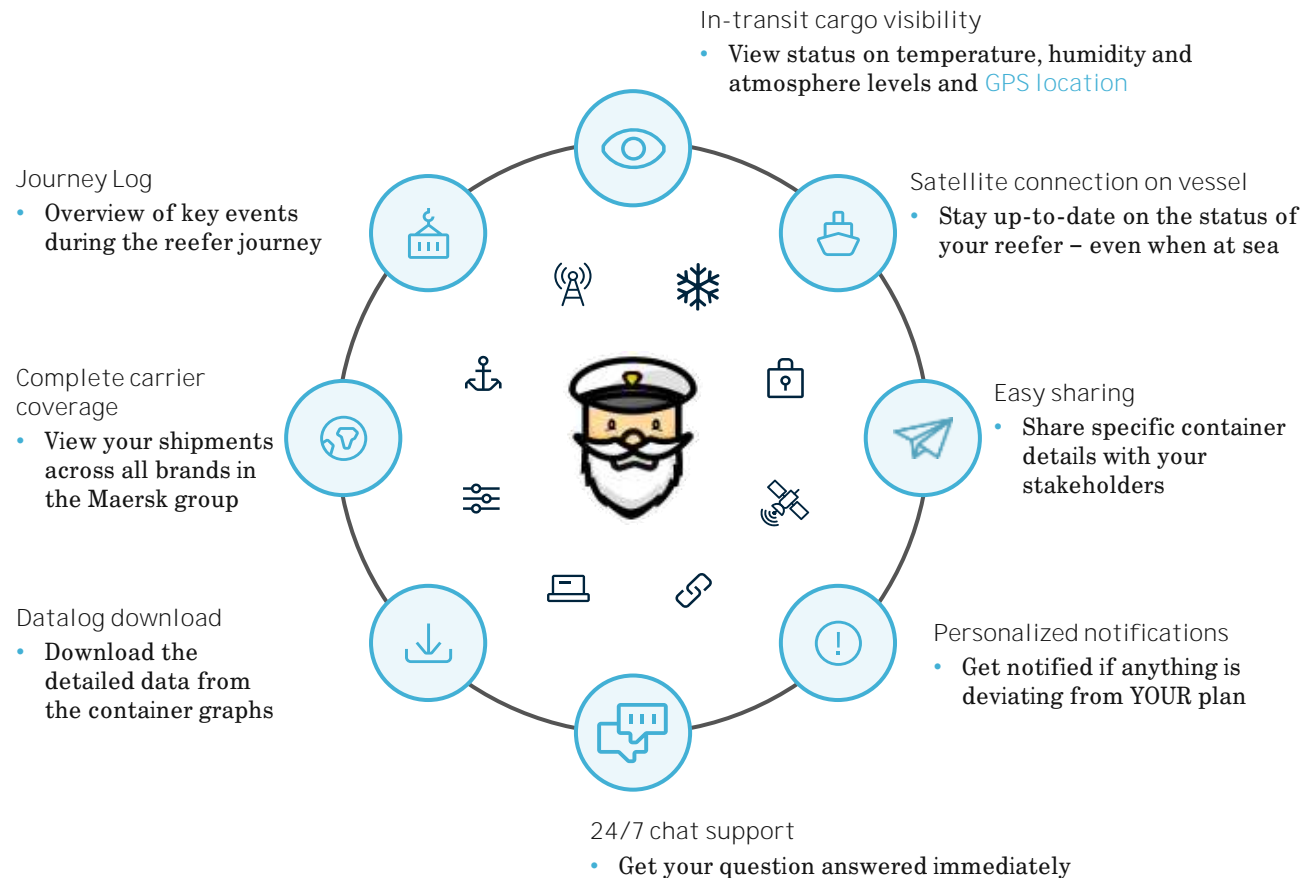
# Maersk Cold Chain Logistics provides digital visibility several levels



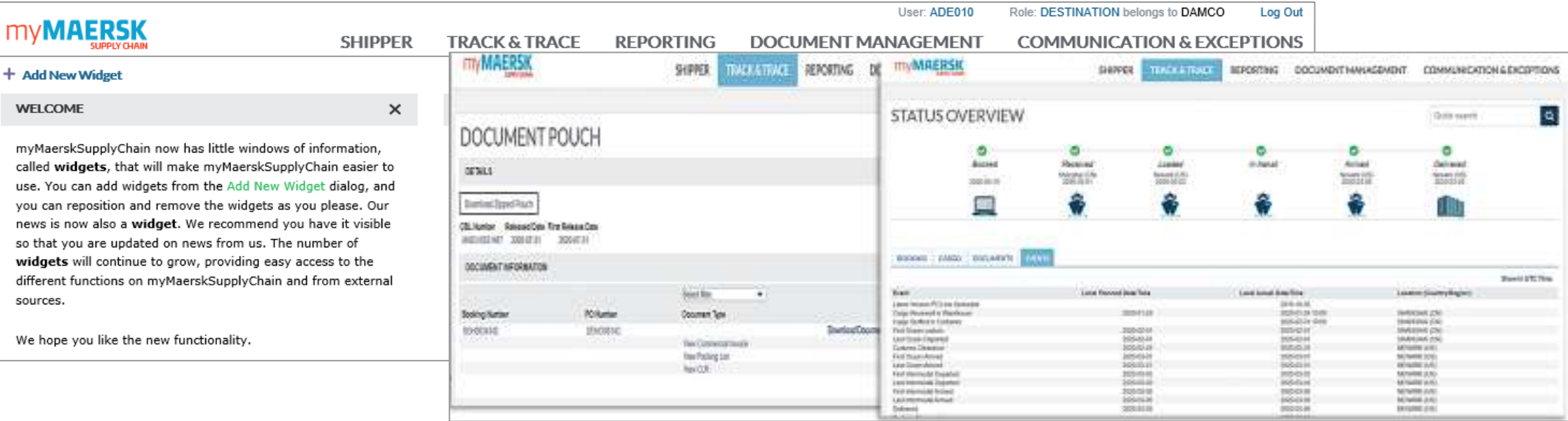
## E2E Supply chain digital visibility



# Our Captain Peter interface provides in-transit visibility of your fresh fruits by monitoring container's temperature and atmospheric conditions



# MyMaersk visibility and analytics



### Shipper Booking Portal

- Booking portal for our partners
- Accelerated response time
- Validated bookings against business rules

### Exception Management

- Upstream visibility to exceptions
- Customer specific options to expedite decisions
- Collaboration between client/Maersk

### Document Management

- Storage
- Visibility & control to documentation process
- Creation standard shipping documents

### Track & Trace

- SKU-level real-time visibility of cargo
- Connectivity with carriers
- Real-time visibility

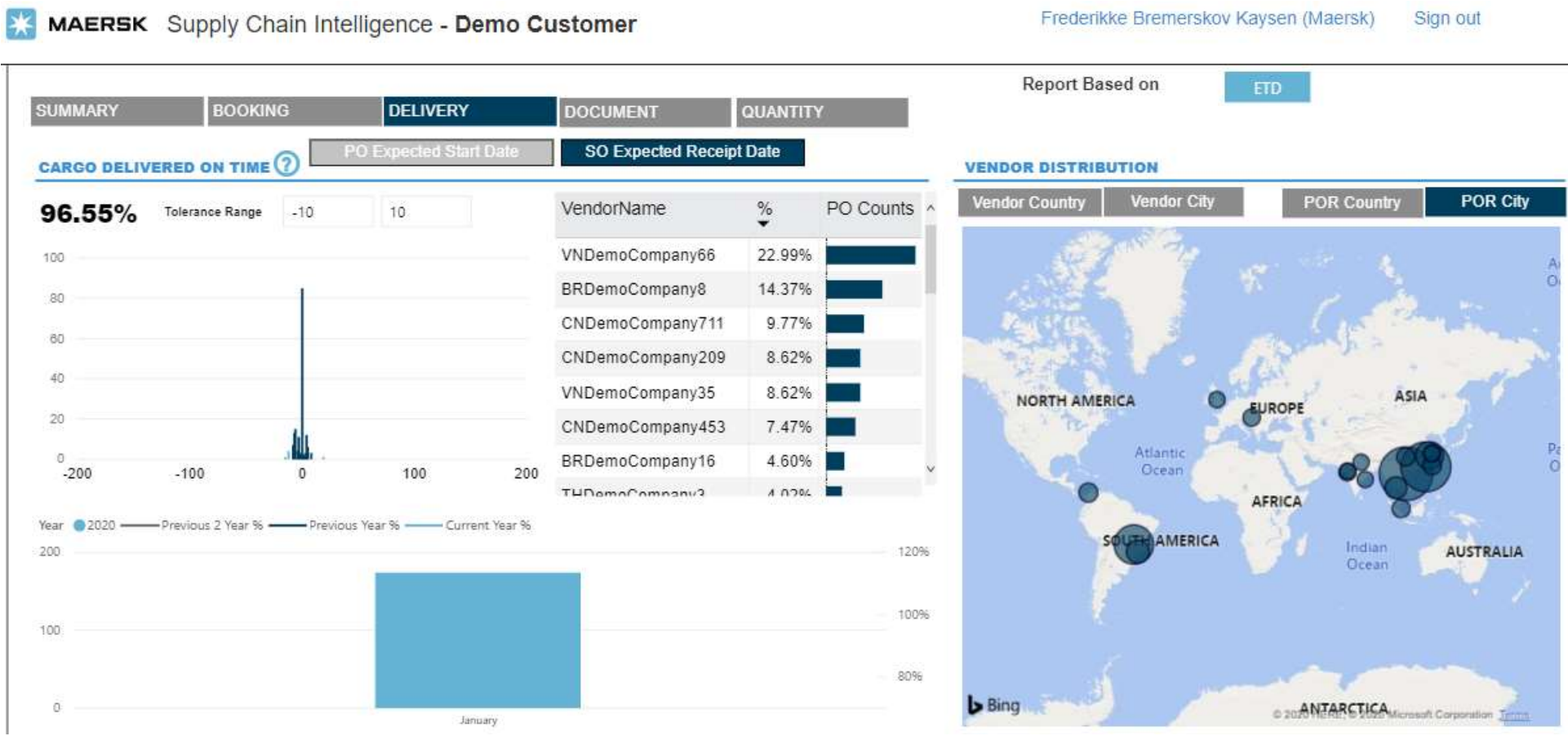
### Reporting

- Standardized reports
- Shipment milestones
- Performance reports to manage your workflow

### Dashboards & Analytics

- KPIs
- Benchmark critical activities
- Analyze data and opportunities

We can enable a Supply Chain Dashboard for actionable insights based the historical data





# Full transparency throughout the journey

## Visibility: Key milestones



Stage	What we expect from the client	Cold Chain Management: Service scope and deliverables
<b>Planning</b>	<ul style="list-style-type: none"> <li>Share Purchase order, weekly volume forecast</li> </ul>	<ul style="list-style-type: none"> <li>Early forecasting to ocean carriers to improve equipment availability</li> </ul>
<b>Booking</b>	<ul style="list-style-type: none"> <li>Place on-line bookings in MyMaersk</li> </ul>	<ul style="list-style-type: none"> <li>Booking with ocean carriers as per XXX's allocation; escalation in case of deviation</li> <li>Follow-up with vendors if booking is not place on-time</li> <li>Check product temperature during booking</li> </ul>
<b>Doc management</b>	<ul style="list-style-type: none"> <li>Instruct vendors which documents are needed</li> </ul>	<ul style="list-style-type: none"> <li>Follow-up with vendors if the document had not been provided</li> <li>Upload documents to MyMaersk (if not done by vendor)</li> </ul>
<b>Ocean transportation</b>	<ul style="list-style-type: none"> <li>Determine lead time</li> </ul>	<ul style="list-style-type: none"> <li>Alert if carriers deviate from the planned lead time</li> </ul>
<b>Pre-advise/arrival</b>	<ul style="list-style-type: none"> <li>Customer's visibility requirements</li> </ul>	<ul style="list-style-type: none"> <li>Visibility through reporting and track-and-trace available for XXX and your customers</li> </ul>
<b>CHB completed</b>	<ul style="list-style-type: none"> <li>Determine requirements for commercial invoice, delivery documents and compliance</li> </ul>	<ul style="list-style-type: none"> <li>Collect documents: Commercial Invoice, Packing List, certificates, Bill of Lading</li> <li>Verify accuracy of documents and correct any discrepancies</li> </ul>
<b>Cold Storage</b>	<ul style="list-style-type: none"> <li>Execution principles</li> </ul>	<ul style="list-style-type: none"> <li>Operation as per agreed process, additional services (labelling, re-boxing, etc), stock reports</li> </ul>
<b>Delivery to Customers</b>	<ul style="list-style-type: none"> <li>KPI's agreed with final customer</li> </ul>	<ul style="list-style-type: none"> <li>Planning delivery dates with customers, notification of changes, reporting POD</li> </ul>
<b>D&amp;D</b>	<ul style="list-style-type: none"> <li>Procure optimal demurrage &amp; free time</li> </ul>	<ul style="list-style-type: none"> <li>Manage delivery to minimize D&amp;D, reporting of D&amp;D dates and amounts</li> </ul>



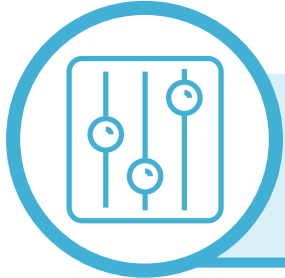
# Seamless Implementation

# Key ingredients for successful onboarding

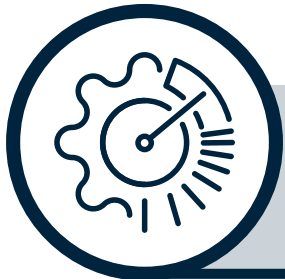
We provide you with...



**A dedicated implementation project team**



**A robust implementation model, with a proven track record**



**A tried and tested implementation methodology**

**Commitment to delivering on time, within scope, and within cost**



**Experienced global IT integration teams and a world class platform**



**Pro-active risk management and business continuity planning**





Thank you!