



*As agent for Ocean Network Express Pte. Ltd.*

**AS ONE, WE CAN.**

**ONE**

**OCEAN NETWORK EXPRESS**

**OCEAN NETWORK EXPRESS Pte. Ltd.**



# Company Profile





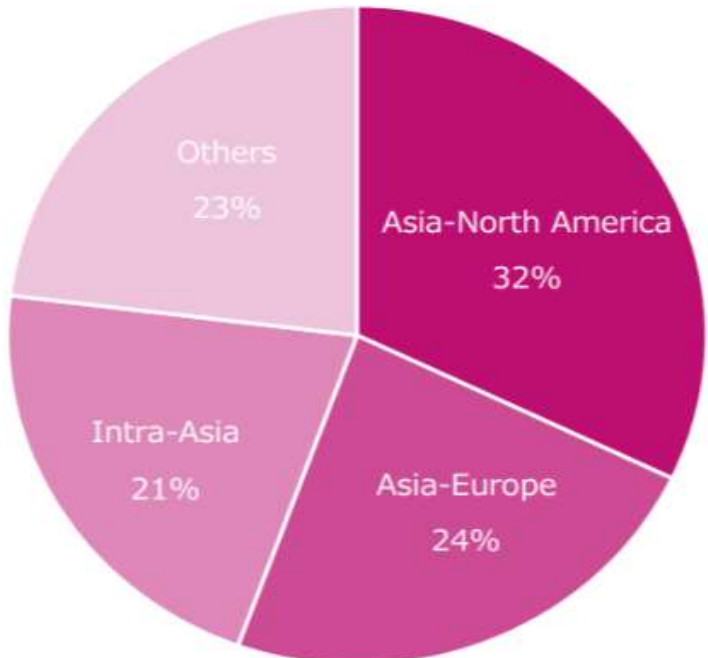
# Global Head Office – Singapore





Rank	Operator	Teu	Share	Existing fleet	Orderbook
1	Mediterranean Shg Co	6,112,965	20.0%		
2	Maersk	4,380,760	14.3%		
3	CMA CGM Group	3,814,319	12.5%		
4	COSCO Group	3,281,475	10.7%		
5	Hapag-Lloyd	2,244,615	7.3%		
6	ONE (Ocean Network Express)	1,935,104	6.3%		
7	Evergreen Line	1,712,215	5.6%		
8	HMM Co Ltd	879,718	2.9%		
9	Zim	753,987	2.5%		
10	Yang Ming Marine Transport Corp.	696,816	2.3%		
11	Wan Hai Lines	526,237	1.7%		
12	PIL (Pacific Int. Line)	347,924	1.1%		
13	X-Press Feeders Group	186,383	0.6%		
14	SITC	180,952	0.6%		
15	Sea Lead Shipping	180,542	0.6%		
16	KMTC	160,644	0.5%		
17	UniFeeder	144,538	0.5%		
18	IRISL Group	143,178	0.5%		
19	Sinokor Merchant Marine	129,125	0.4%		
20	TS Lines	101,468	0.3%		
21	Emirates Shipping Line	98,627	0.3%		
22	RCL (Regional Container L.)	96,638	0.3%		
23	Ningbo Ocean Shg Co	79,889	0.3%		
24	Zhonggu Logistics Corp.	79,476	0.3%		
25	Global Feeder Shipping LLC	78,283	0.3%		
26	Antong Holdings (QASC)	77,041	0.3%		
27	Tangshan Port Hede Shipping	70,519	0.2%		
28	Matson	69,235	0.2%		
29	Swire Shipping	68,103	0.2%		
30	SM Line Corp.	59,998	0.2%		

ONE Rank #6 in top 30 carriers  
Market Share: 6.3%  
Operating Fleet: 245 Containerships  
Operating Capacity: 1.94 Million TEUs



Source: Alphaliner October 2024



KOPER

Centralog d.o.o. Slovenia  
Ferrarska 30, SI-6000 Koper  
Phone number: +386 5610 6000

DEPARTMENT	SUBDIVISION	CONTACT	
Customer Services	Export	In.sikop@centralog.com	+386 5610 6000
	Import	In.sikop@centralog.com	+386 5610 6000
	New Booking	In.sikop@centralog.com	+386 5610 6000
Documentation		doc.In.sikop@centralog.com	+386 5610 6000
General Enquiries		In.sikop@centralog.com	+386 5610 6000
Invoice Queries		fi.sikop@centralog.com	+386 5610 6000
Operations		ops.In.sikop@centralog.com	+386 5610 6000
Sales		sal.In.sikop@centralog.com	+386 5610 6000

<https://eua.one-line.com/standard-page/office-location>



# Green Strategy





### Green Vision

To be a global leader in the realisation of environmentally sustainable shipping.



### Decarbonization Targets

**Emission intensity:**

To Reduce Scope 1 GHG emissions by 70% per TEU km by 2030.

**Absolute emissions**

Achieve net-zero GHG emissions (including scope 2 & 3) by 2050.



### Green Mission

We will achieve carbon net-zero shipping in order to protect our planet via lean and agile best practices and open collaboration.



### Environmental Compliance

**Ship Recycling:**

Ensure partner yards comply with the highest internationally recognised standards.

**Environmental conversation:**

Ensure ZERO significant spills for all vessels.

## Our Roadmap to Meet Net Zero by 2050

2018

ONE established

2019

First CO<sub>2</sub> reduction targets set

2021

Green Strategy Department set up to drive decarbonization

2022

Net-zero ambition established with Green Strategy launched

2023

Obtain zero emission vessel AIP Launch low emissions service offering

2030

70% reduction in emission intensity Deploy first alternative fuel ships

2050

Achieve net-zero emissions across Scopes 1, 2 and 3



### Carbon Management

Transition into a low-carbon economy



### Operational Efficiency

Be the most operationally efficient maritime container carrier



### Green Investment

Invest in green hardware, technologies and talents to improve emissions reduction



### Alternative Fuels

Develop a transitional plan and build infrastructure for sustainable shipping fuels



### Ecosystem Building

Collaborate with cross-functional stakeholders to decarbonize the shipping industry

## ONE's Vision, Mission, and Targets for decarbonization and environmental measures

### Green Vision

- To be a **global leader** in the realization of **environmentally sustainable shipping**

### Green Mission

- **ONE will achieve carbon net-zero shipping** in order to protect our planet via **lean and agile** best practices and **open collaboration**

### Decarbonization targets

- **Emissions intensity:**  
To **Reduce scope 1 GHG** emissions **by 70% <sup>(1)</sup>** per TEU km **by 2030**
- **Absolute emissions:**  
**Achieve net-zero GHG emissions** (including scope 2 & 3) **by 2050**

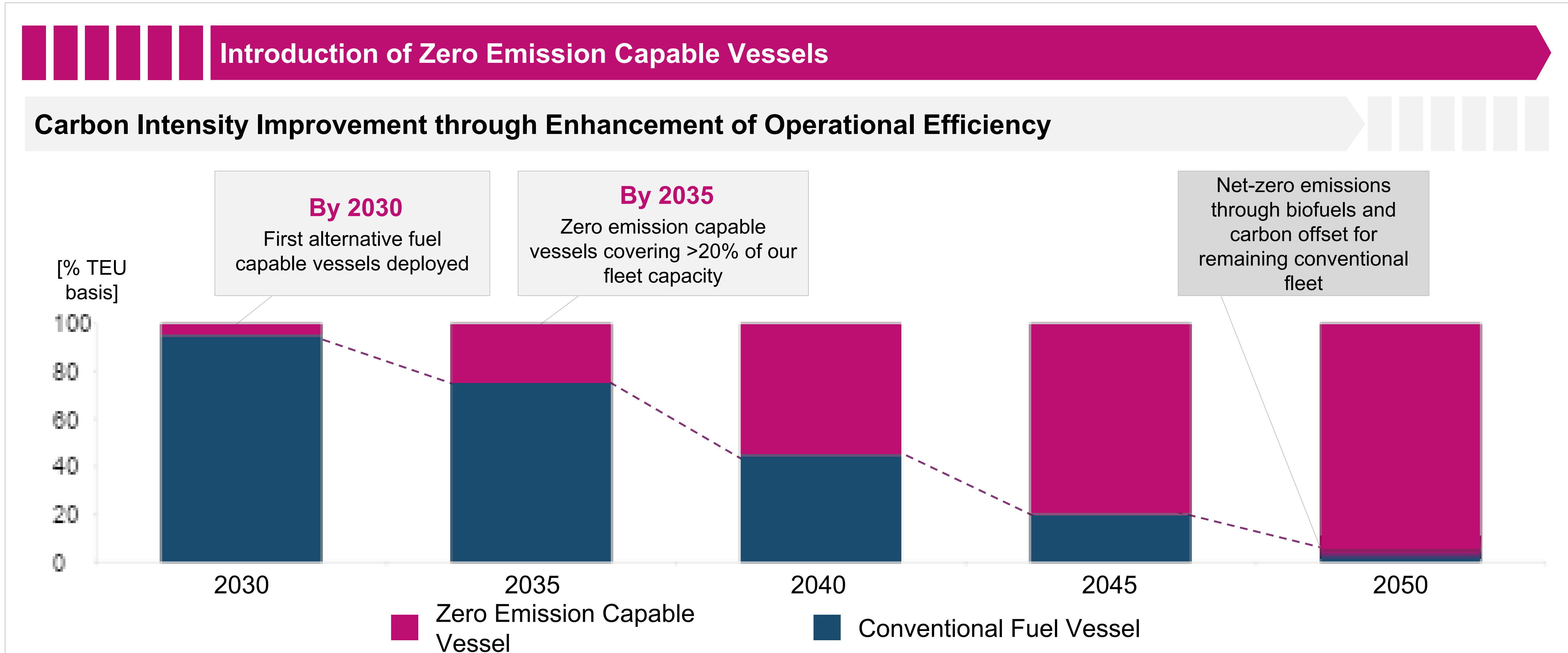
### Environmental Compliance

- **Ship recycling:**  
Ensure partner yards **comply with the highest internationally-recognized standards**
- **Environmental conservation:**  
**Ensure ZERO significant spills** for all vessels

Note: (1) –Vs 2008 base line. Representing a reducing 35% by 2030 from the 2018 base line. GHG = Green House Gas.



## Transitioning ONE's fleet towards decarbonization



Roadmap will be continuously reviewed based on technology development, industry regulations and voices of stakeholders





- Bow Windshields have been installed on more than 10 ships
- They facilitate reduction of emissions of up to 2%, according to primary demonstration, by reducing the drag of air.



Each VentoFoil, is equipped with smart suction system that optimize airflow and maximize thrust and has the potential to generate up to 400kW of power, reducing fuel consumption by 5%. They are fully automatic, adjust for wind speed and direction, and can be started from the ship bridge.

During 2024 and for approximately six months, ONE deployed Vento Foils on a 1000 teu ship operating between Korea, Japan and Hawaii. During this period, we collected data on fuel consumption, emissions reductions, and overall operational efficiency. These results will be used to assess the long-term viability of wind propulsion as a sustainable shipping solution.



# Premier Alliance





Ocean Network Express (“ONE”), HMM, and Yang Ming Marine Transportation are thrilled to announce their continued collaboration under the new alliance name Premier Alliance, effective for five years starting February 2025. This long-standing partnership ensures enhanced value and seamless operations, offering reliable and flexible services with expanded global coverage across major East - West Tradelines.

In 2025, the Trans Pacific trade service products introduced by ONE in March 2024 will see comprehensive updates for all major trade lanes. With the Premier Alliance, ONE aims to provide wide coverage service to valued customers, complementing its independent services.





Ocean Network Express (“ONE”), a member of Premier Alliance, is excited to announce **“a slot exchange cooperation”** with Mediterranean Shipping Company (“MSC”) in the Asia - Europe trade. This collaboration will involve 9 services, allowing ONE to expand direct port coverage with frequent sailings in the Asia - North Europe and Mediterranean trade lanes.

Through the slot exchange cooperation with MSC, ONE will enhance its network offerings to better serve valued customers, ensuring a broader range of services and increased connectivity.

## Premier Alliance



## MSC Cooperation



\*MSC cooperating on Asia-Europe routes

Remark : MSC, which has officially parted ways with alliances, choosing to operate independently but with new strategic partnerships on certain tradelanes.



# Global Network





# ADRIATIC SERVICE 1 (AD1)



- High-quality Damietta-to-Koper service designed to support the reefer supply chain
- Reliable service with one operating vessels

Port Rotation

(Terminals are subject to change)

ORIGIN	CODE	ETA	ETD	TERMINAL
KOPER	KOP	WED	THU	LUKA KOPER D.D
VENICE	VCE	FRI	SAT	VENEZIA-VENICE CONTAINER TERMINAL - VECON
DAMIETTA	DAM	THU	SAT	DAMIETTA CONTAINER TERMINAL
KOPER	KOP	WED	THU	LUKA KOPER D.D

Transit Time

E/B	DAM
KOP	7
VCE	5

W/B	KOP	VCE
DAM	4	6



# ADRIATIC SERVICE 2 (AD2)



- Unique butterfly service connecting Adriatic and East Mediterranean
- Direct Limassol calls to cater ONE’s strategic commodity demand
- Reliable service with ONE operating vessels

Port Rotation (Terminals are subject to change)

ORIGIN	CODE	ETA	ETD	TERMINAL
TRIESTE	TRS	TUE	TUE	-
VENICE	VCE	WED	THU	-
RAVENNA	RAN	THU	FRI	-
ANCONA	AOI	SAT	SAT	-
KOPER	KOP	SUN	MON	-
PIRAEUS	PIR	WED	THU	-
ABU QIR	AKI	SAT	SUN	-
LIMASSOL	LMS	MON	TUE	-
BEIRUT	BEY	TUE	WED	-
PIRAEUS	PIR	FRI	SAT	-
TRIESTE	TRS	TUE	TUE	-

Transit Time

E/B	PIR	AKI	LMS	BEY	W/B	PIR	TRS	VCE	RAN	AOI	KOP
TRS	8	11	13	14	AKI	5	9	10	11	13	14
VCE	6	9	11	12	LMS	3	7	8	9	11	12
RAN	5	8	10	11	BEY	2	6	7	8	10	11
AOI	4	7	9	10	PIR	-	3	4	5	7	8
KOP	2	5	7	8							
PIR	-	2	4	5							



# MEDITERRANEAN SERVICE 1 (MD1)



- Direct service that offers thorough coverage of Eastern Mediterranean ports
- Direct service from Eastern Mediterranean and Egypt to Singapore/China

Port Rotation

(Terminals are subject to change)

ORIGIN	CODE	ETA	ETD	TERMINAL
NINGBO	NGB	TUE	THU	NINGBO DAXIE CONTAINER TERMINAL
SHANGHAI	SHA	THU	FRI	SIPG YANGSHAN PHASE IV
SHEKOU	SHK	MON	TUE	MAWAN CONTAINER TERMINAL (MCT)
SINGAPORE	SIN	SAT	SUN	PSA SINGAPORE
DAMIETTA	DAM	THU	SAT	DCHC
PIRAEUS	PIR	WED	THU	PIRAEUS CONTAINER TERMINAL (PCT)
ISTANBUL	IST	FRI	MON	MARPORT EAST (KUMPORT) TERMINAL
IZMIT	IZT	MON	TUE	DPW YARIMCA
MERSIN	MER	SUN	MON	MERSIN INTERNATIONAL PORT (MIP)
DAMIETTA	DAM	TUE	WED	DCHC
SINGAPORE	SIN	SUN	TUE	PSA SINGAPORE
KAOHSIUNG	KHH	SUN	SUN	KAO MING CONTAINER TERMINAL (KMCT)
NINGBO	NGB	TUE	THU	NINGBO DAXIE CONTAINER TERMINAL

Transit Time

W/B	DAM	PIR	IST	IZT	MER	E/B	SIN	KHH	NGB	SHA	SHK
NGB	42	48	50	53	59	PIR	45	52	54	56	60
SHA	41	47	49	52	58	IST	41	48	50	52	56
SHK	37	43	45	48	54	IZT	40	47	49	51	55
SIN	32	38	40	43	49	MER	34	41	43	45	49
						DAM	32	39	41	43	47





- Dedicated service connection West India, Pakistan with West, East Mediterranean ports directly

Port Rotation (Terminals are subject to change)

ORIGIN	CODE	ETA	ETD	TERMINAL
NHAVA SHEVA	NSA	FRI	SAT	BHARAT MUMBAI CONTAINER TERMINALS (PSA)
KARACHI	KHI	MON	MON	SOUTH ASIA PAKISTAN TERMINALS
MUNDRA	MUN	TUE	WED	ADANI INTERNATIONAL CONTAINER TERMINAL (CT3)
ALGECIRAS	ALG	MON	TUE	TOTAL TERMINAL INTERNATIONAL ALGECIRAS
VALENCIA	VLC	WED	FRI	APM TERMINALS VALENCIA
BARCELONA	BCN	SAT	SUN	APM TERMINALS BARCELONA
GENOA	GOA	MON	WED	PSA GENOVA PRA (VOLTRI TERMINAL EUROPA)
PIRAEUS	PIR	SAT	MON	PIRAEUS CONTAINER TERMINAL (COSCO PIER II)
ALGECIRAS	ALG	THU	FRI	TOTAL TERMINAL INTERNATIONAL ALGECIRAS
KARACHI	KHI	THU	THU	SOUTH ASIA PAKISTAN TERMINALS
MUNDRA	MUN	FRI	SAT	ADANI INTERNATIONAL CONTAINER TERMINAL (CT3)
NHAVA SHEVA	NSA	SUN	SAT	BHARAT MUMBAI CONTAINER TERMINALS (PSA)

Transit Time

W/B	ALG	VLC	BCN	GOA	PIR	E/B	KHI	MUN	NSA
NSA	30	32	35	37	42	VLC	41	42	44
KHI	28	30	33	35	40	BCN	39	40	42
MUN	26	28	31	33	38	GOA	36	37	39
						PIR	31	32	34
						ALG	27	28	30





- Fast transit time from La Spezia to US East coast ports
- Offering fast direct service from Piraeus to US East coast ports
- Very fast transit times from US East coast ports to Iskenderun

Port Rotation (Terminals are subject to change)

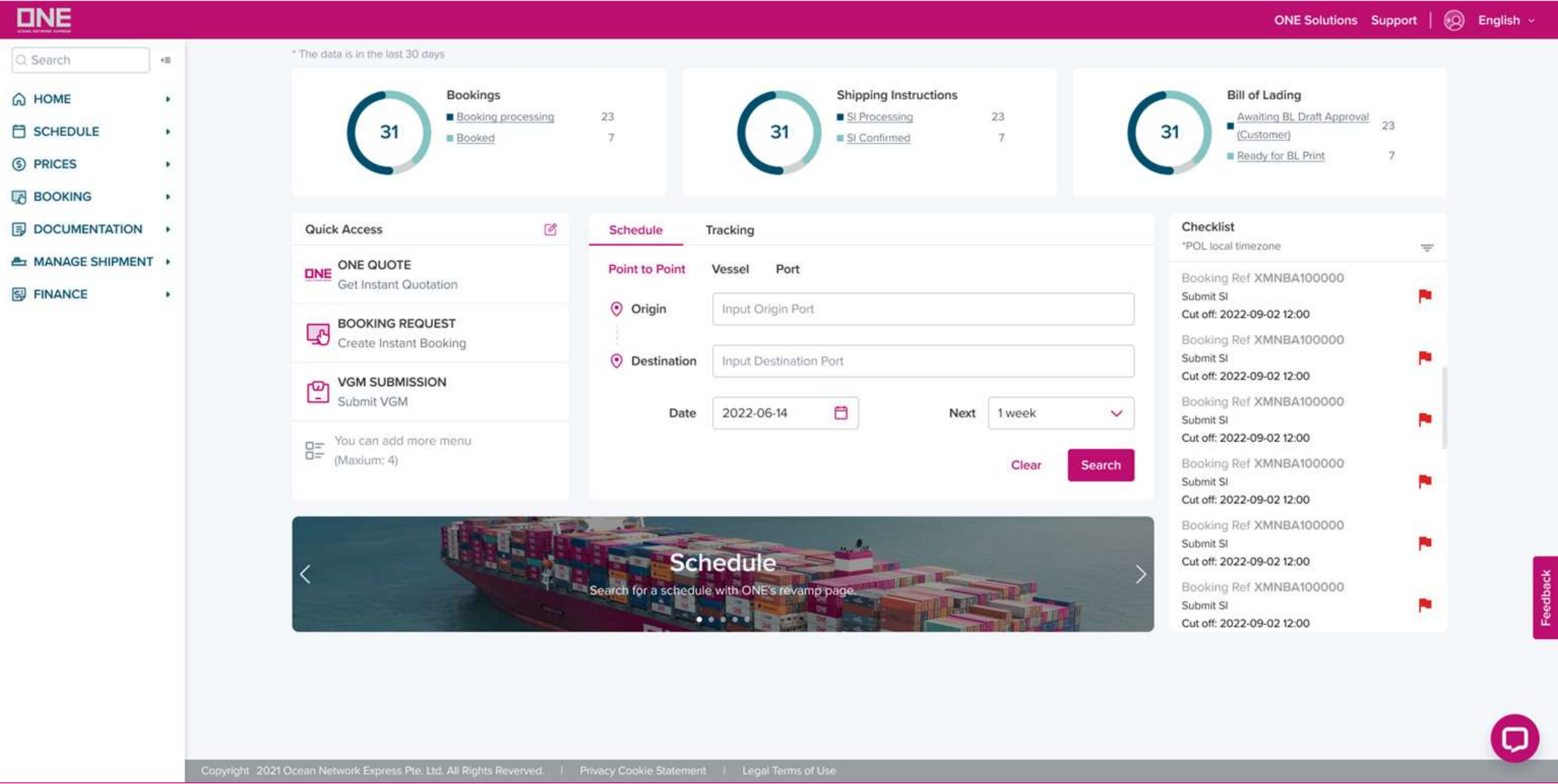
ORIGIN	CODE	ETA	ETD	TERMINAL
ISKENDERUN	ISK	FRI	SAT	LIMAKPORT ISKENDERUN
ALIAGA	ALI	SUN	MON	NEMPORT
ISTANBUL	IST	TUE	TUE	KUMPORT
PIRAEUS	PIR	WED	THU	PIRAEUS CONTAINER TERMINAL (PCT)
VADO LIGURE	VDL	SAT	SUN	APMT VADO LIGURE
LA SPEZIA	SPE	SUN	MON	LA SPEZIA CONTAINER TERMINAL (LSCT)
ALGECIRAS	ALG	THU	FRI	TOTAL TERMINAL INTERNATIONAL (TTI)
NEW YORK	NYC	FRI	SAT	MAHER TERMINALS
NORFOLK	ORF	SUN	MON	NORFOLK INTERNATIONAL TERMINAL (NIT)
SAVANNAH	SAV	TUE	WED	GARDEN CITY TERMINAL
ALGECIRAS	ALG	SUN	SUN	TOTAL TERMINAL INTERNATIONAL (TTI)
ISKENDERUN	ISK	FRI	SAT	LIMAKPORT ISKENDERUN



# Digitalisation



Customer interface, involving both direct EDI links, ONE’s eCommerce applications and 3<sup>rd</sup> party connections such as those via our portal partners, are operational.



Video -ONE eCommerce Intro

DESCRIPTION	MESSAGE TYPES	
	ANSI	EDIFACT
Booking Requests	300	IFTMBF
Booking Confirmation	301	IFTMBC
Shipping Instructions	304	IFTMIN
Bill of Lading	310	IFTMCS
Container Movements	315	IFTSTA
Schedules	323	IFTSAI
Verified Gross Mass	-	VERMAS
Functional Acknowledgements	997	CONTRL
Application Acknowledgements	824	APERAK
XML - Used globally	-	-



## ONE eCommerce Feature Overview

Planning and managing your shipment is simple, easy and convenient with ONE eCommerce. ONE eCommerce is a simple self help platform that provides you end to end digital shipping solutions. With a user friendly design, you can easily manage all shipment activities such as, instant booking and quotation, submitting VGM, cargo tracking and paying on-line. As a valued customer, we hope you will consider registering on-line with ONE and begin to take advantage of the many convenient functions available on our website [ONE eCommerce](#)

**Please take a look at what we offer.**



### Homepage

Offers mini dashboard for real-time quick overview of shipment status , customized quick access to various eCom features and reminder tool for users.



### Schedule

Dynamic point-to-point schedules and routings to choose from when scheduling a shipment. Confirm cargo cut-off date at origin and cargo availability date at destination for your guidance.



### ONE QUOTE

Getting a quote for your shipment has never been faster and easier.



### Rate & Tariff

View ONE basic tariff for Demurrage and Detention based on origin, destination and container/cargo type. Use search criteria to see incurred costs for Demurrage and Detention on your shipments. Check any Detention status by Contract number or B/L number for a selected period.



### Booking

Booking Request is easier than ever in ONE. Submit new bookings, amendments and receives notification once the booking is submitted. You can use our Booking Template to minimize entries as well.



### eSI Submission & Amendment

Submit Shipping Instructions (SI) , make amendments & download Draft BLs, Sea Waybills and the non-negotiable bills. Additionally, just like our Booking Templates, we also offer SI templates to minimize information that needs to be provided at time of SI submission.



## ONE eCommerce Feature Overview

Planning and managing your shipment is simple, easy and convenient with ONE eCommerce. ONE eCommerce is a simple self help platform that provides you end to end digital shipping solutions. With a user friendly design, you can easily manage all shipment activities such as, instant booking and quotation, submitting VGM, cargo tracking and paying on-line. As a valued customer, we hope you will consider registering on-line with ONE and begin to take advantage of the many convenient functions available on our website [ONE eCommerce](#)

**Please take a look at what we offer.**



### Shipment Overview: Import and Export

With 24/7 visibility, users can readily access to real-time import/export shipment status and directly take to-do actions according to shipment journeys such as booking creation, submitting SI, Printing BL, Arrival Notice or Payment check



### eBL

ONE eBL is a simple, swift and secure way of issuing, transfer and sign bills of lading and other trade documents electronically across partners in the supply chain.



### ePayment

ONE offers online payment solutions for you to pay easily and securely.



### Track & Trace

Offers the status of your cargo and estimated time of future events as well as the past events history with the container number or booking number. Have real time access to your container tracking whenever you need it.



### eVGM

Online VGM submission  
Batch VGM submission via excel Template.  
Online inquiry for container tare weight.



### My Report

Create, save and send customized reports which cover multiple aspects of your business. Choose to run a report on all available reporting criteria or tailor your report to meet your needs. (A customer ID is necessary to use this option.)

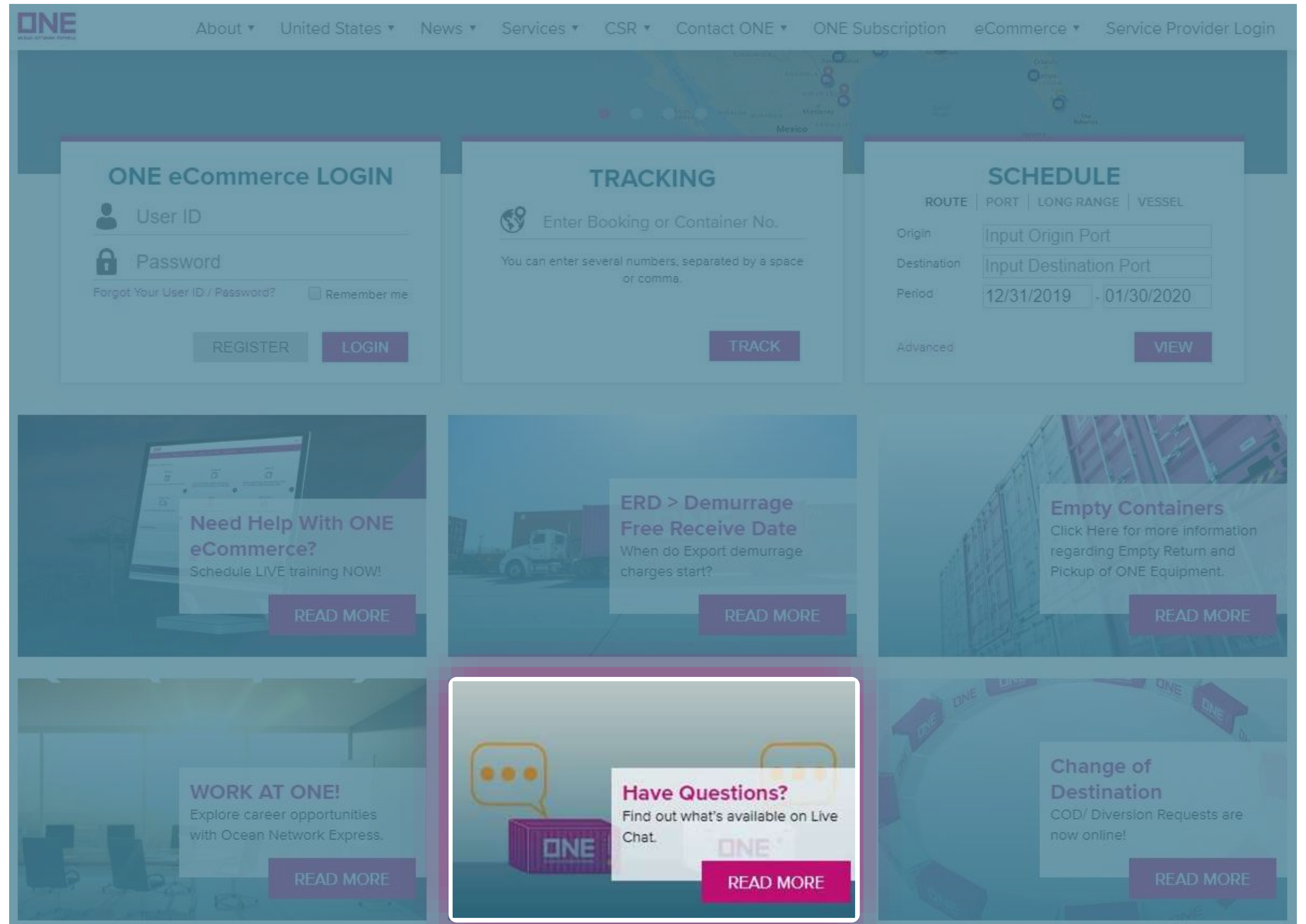


## New Feature Available!



### Live Chat for Exports, Imports & other Services

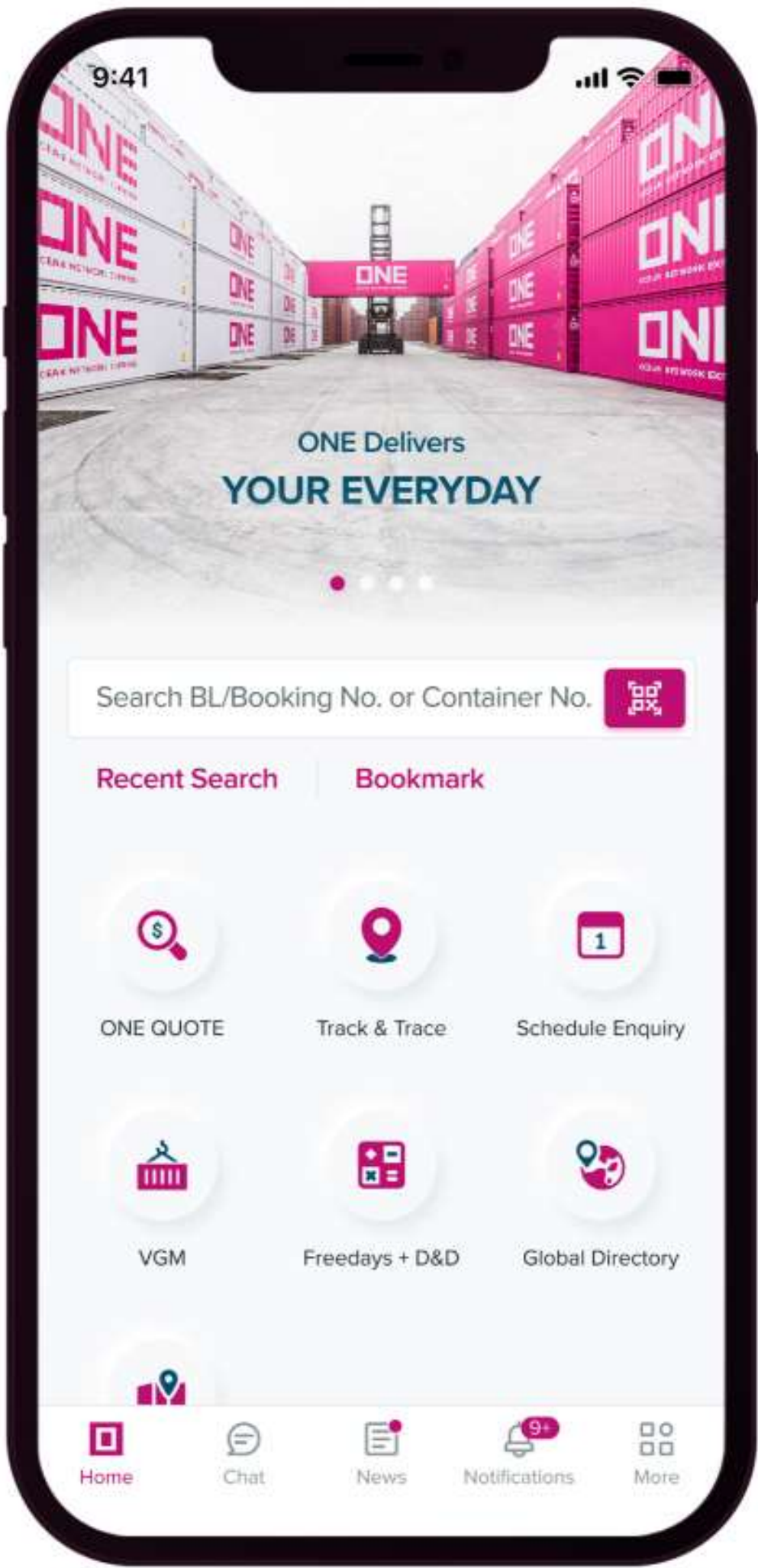
- Available in more than 50 countries with slowly moving towards Chat as the dominant Support channel for our customers;
- Easy to understand Menu with BOT assistance to navigate through;
- Easy to understand Post Chat Survey;
- BOTs to answer specific questions;
- Seamless experience in Mobile Apps & eCommerce;
- Top 5 intents by Service Customer enables reaching support agents easily;
- Support local language to improve customer experience;
- Focuses quality audit teams on ensuring we provide consistent and timely service to customers;
- Click [here](#) for Chat available hours per country.



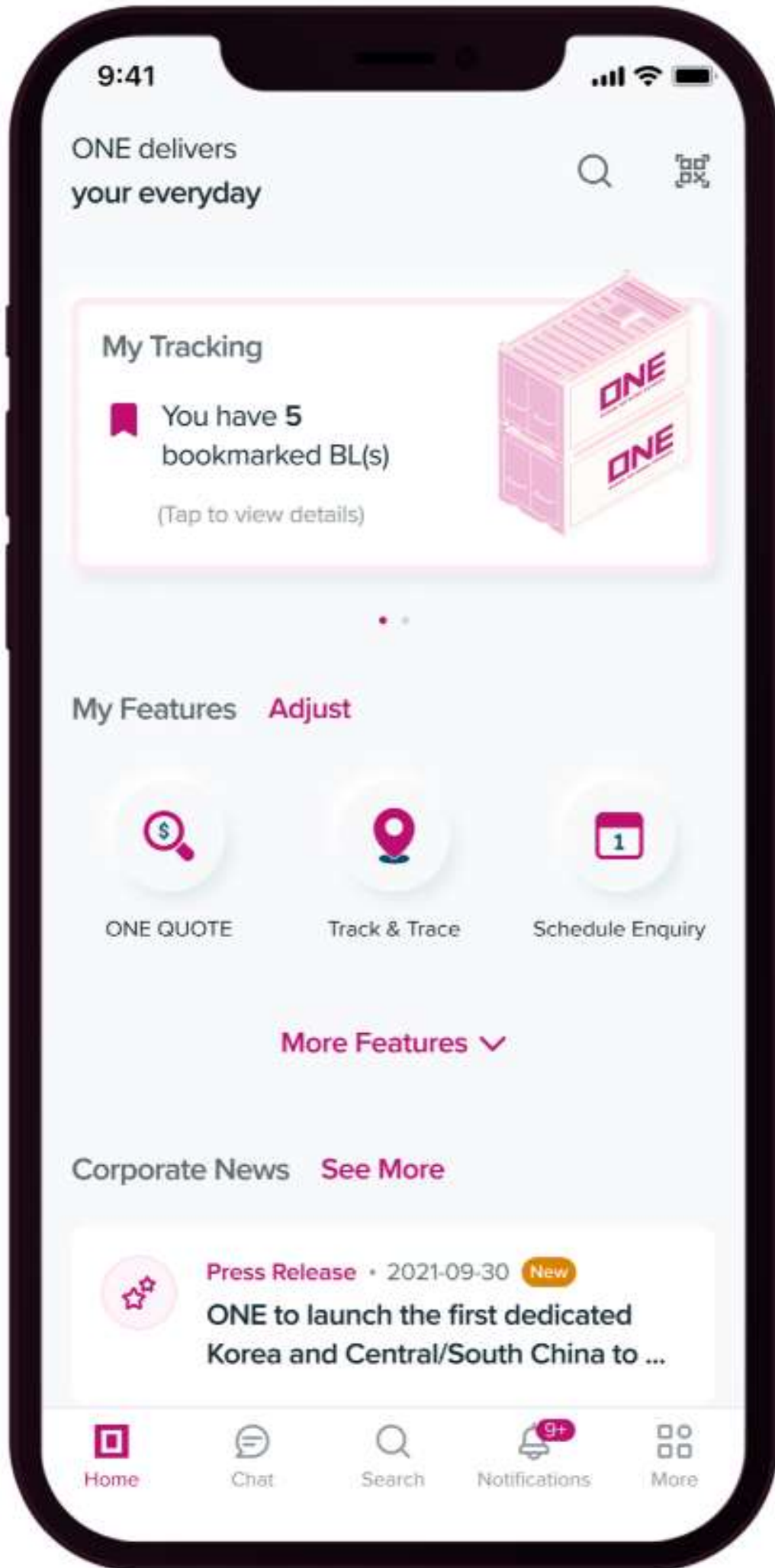


# One Mobile App Current Features









Classic View



Advanced View



Current version of ONE Mobile App includes the following Main features:

 <b>ONE QUOTE</b>	 <b>TRACK &amp; TRACE</b>
 <b>LIVE CHAT</b>	 <b>SERVICE MAP</b>
 <b>GLOBAL DIRECTORY</b>	 <b>VGM</b>
 <b>SCHEDULE ENQUIRY</b>	 <b>FREEDAYS + D&amp;D</b>

*Minor features includes Corporation News, FAQ/User Guide, Language Setting & Location Settings*



# Refrigerated Cargo







**All routes  
lead to ONE**

- ONE is a leading Asian Carrier with a strong legacy and more than 130 weekly services connecting over 120 countries in the world.
- One has the 4<sup>th</sup> largest reefer container fleet in the world and continues regular expansion of reefer fleet with new investment. ONE's Reefer investment: 27,500 units in 2020, 9500 units in 2021 and 12,500 units in 2022.
- ONE maintains strong investment in controlled atmosphere technologies, offering customers with multiple technology choices. ONE is the largest player in Active CA containers in the market.
- ONE has younger fleet of reefers (Avg. 5 years age) compare to industry average.
- Robust repair maintenance policy to maintain food grade quality.



# ONE is a top global reefer carrier

- In terms of Reefer box fleet, ONE has one of the largest reefer fleet in the world ( 4<sup>rd</sup> rank based on Drewry 2022)
- In terms of LIVE Reefer lifting, ONE carries a significant portion equalling to 10% market share in the world (based on Seabury's statistics).

**Over 90% of world reefer volume is related to these 4 segments – ONE's key strengths**



## Chilled Meat

- Best service with on time schedule reliability to major chilled protein destinations such as Japan, Korea and Taiwan
- Inland long haul truck and reefer rail combination service in USA
- High quality Customer Service Teams around the world to support time sensitive chilled protein business



## Frozen Meat

- Wide coverage of origins such as NA, Europe, Oceania Latin America and more
- Multiple rail services to WC and EC in North America to handle frozen protein business (ex. Omaha, Kansas City and Chicago in the US. Calgary, Winnipeg, Toronto and Montreal in Canada.)
- Ideal equipment availability (clip-on and under-slung gensets in USA)



## Fruits/vegetables

- Weekly/Multiple service from all fresh fruits/vegetables origins( LAWC, USA, SAF)
- Competitive transit time (Fastest in many loops)
- Diversified reefer technologies (CA, CT, Dehumidification)
- Leading player in Controlled Atmosphere technology; having the largest fleet of active CA units in market.



## Seafood

- Dedicated service focus to handle seafood season out of Alaska, Chile, Halifax, Norway etc.
- Premium service connection to Japan ( Major seafood consumption market) or China destinations (Seafood processing industry)
- Dedicated feeder arrangements and empty repositioning



# Controlled & Modified Atmosphere (CA & MA)

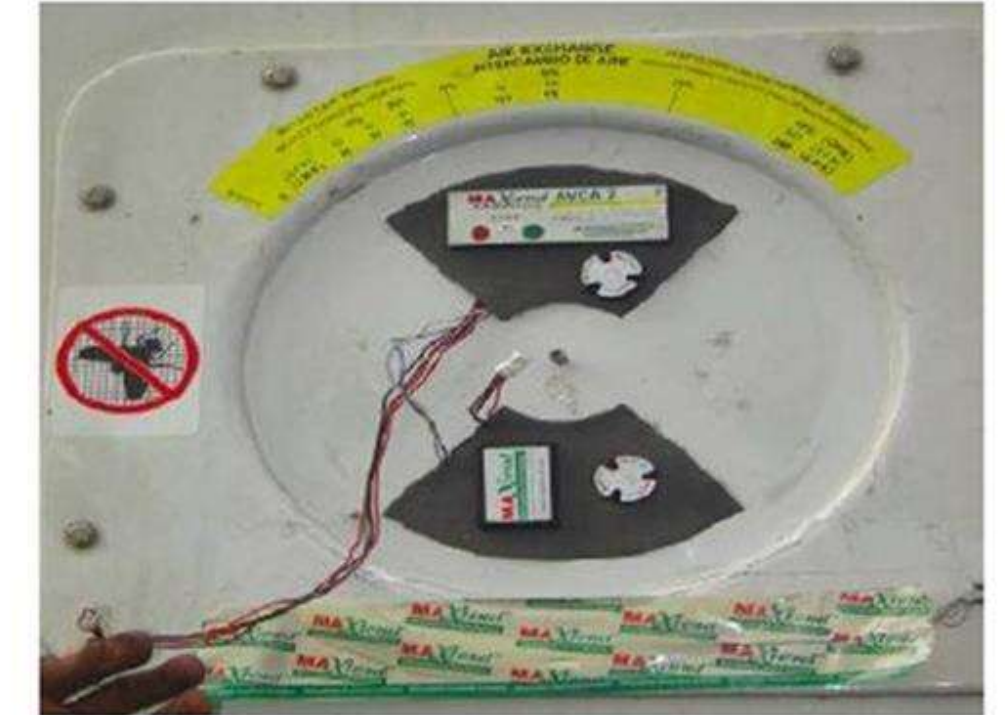
ONE Reefers will have different solutions to customers' demand

CA/MA is a technology that extends the storage period of fruits and vegetables by adjusting the oxygen and carbon dioxide concentrations inside the hold. Depending on the type of vegetables and fruits, there should be a suitable balance of oxygen and carbon dioxide concentration. By keeping the concentration balanced during the transportation period, the quality of the cargo is maintained.

**STAR COOL**  
POWER PLUG AND STARTUP

**DAIKIN**

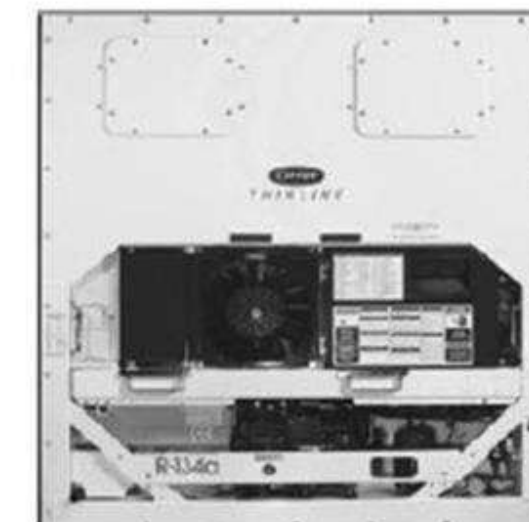
**MAXtend**  
Atmosphere Control System  
Mitsubishi Australia Limited



**purfresh**  
Purify, Protect, Preserve.

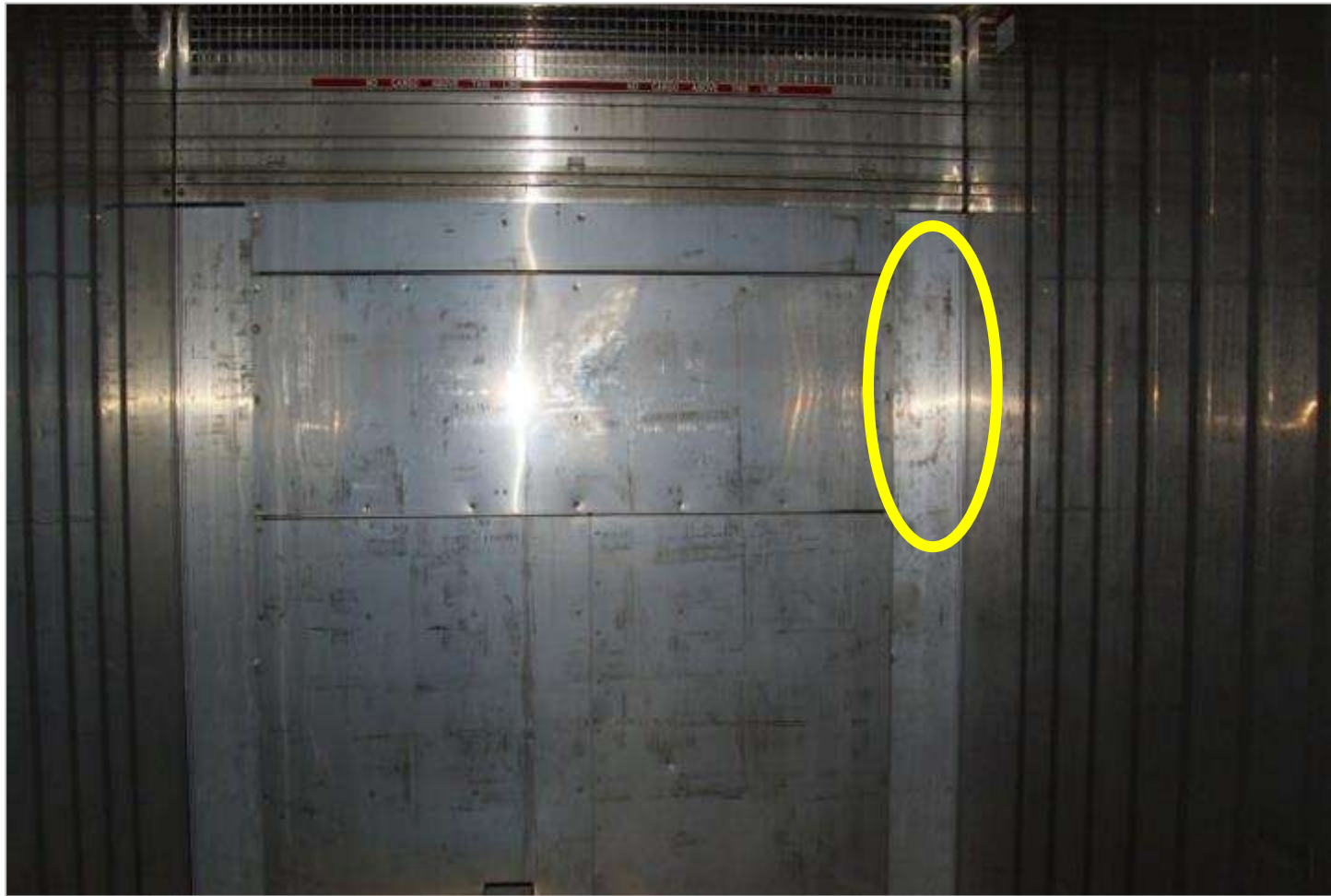


**Liventus**





Cold treatment (CT) is a technology that helps to maintain an uninterrupted low temperature for a predetermined duration in order to kill any insects and larvae that may be hidden in perishable fruits and vegetables. Majority of ONE Reefers are equipped with Cold treatment technology.





- Maximum space for cargo with high internal volume loadable capacity.
- Low tare weight to maximize payload.
- Equipped with latest technology for greater thermal efficiency.
- Minimal air leakage and low heat leakage to maintain set temperature.
- On board monitoring by 24 hours hot line with vessel.
- Temperature -30 to +30C/Vent/DHU/CT/CA.

## Unit Specifications

### 20- foot refrigerated container

Sample Specification		
Exterior	Length (mm)	6,058
	Width (mm)	2,438
	Height (mm)	2,591
Interior	Length (mm)	5,456
	Width (mm)	2,228
	Height (mm)	2,263
Internal Capacity	(m³)	28.2
Doorway	Width (mm)	2,290
	Height (mm)	2,221
Tare Weight	(kgs)	2,910
Maximum Payload	(kgs)	27,570
Gross Weight	(kgs)	30,480

### 40- foot high-cube refrigerated container

Sample Specification		
Exterior	Length (mm)	12,192
	Width (mm)	2,438
	Height (mm)	2,896
Interior	Length (mm)	11,590
	Width (mm)	2,284
	Height (mm)	2,544
Internal Capacity	(m³)	67.5
Doorway	Width (mm)	2,290
	Height (mm)	2,502
Tare Weight	(kgs)	4,520
Maximum Payload	(kgs)	29,480
Gross Weight	(kgs)	34,000

The above dimensions serve as samples only while actual container dimensions vary with different specification

## Key Technical Specifications

Key Features	
TEMPERATURE RANGE	Normal Reefer: +30 Degree C to -30 Degree C PRIMELINE and MAGNUM PLUS- +35 Degree C to -35 Degree C
VENTILATION RANGE	0 to 285 CBM/H
OPERATING VOLTAGE	360-500 VOLTS/ 50-60 HERTZ
DEHUMIDIFICATION	95% to 65%
REEFER MACHINE EQUIPPED WITH ADVANCED TECHNOLOGY FOR FAST COOL DOWN	
SUPERIOR INSULATION TO MINIMIZE HEAT LEAKAGE	



# Container +





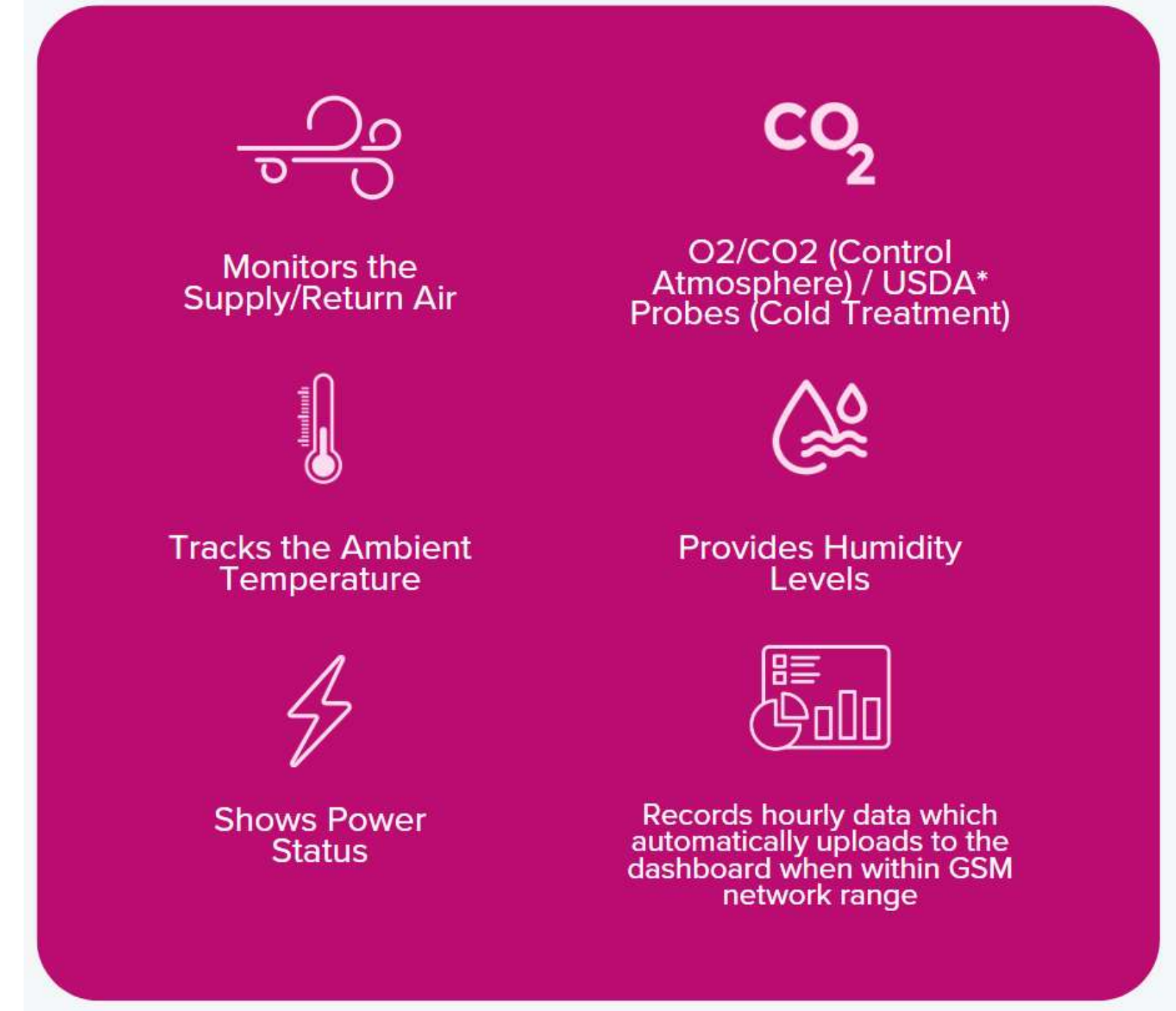
# CONTAINER+

Transparency and full data visibility from inside your container directly to your screen, anytime and anywhere. ONE's advanced product, offering dashboards with **near real-time** monitoring and key data to empower you and your business.

## WHY CONTAINER+

### Enhances your visibility

- Access **all your data** through a single, reliable, and user-friendly **ONE Dashboard** with near real-time updates every hour
- Visualize **data as charts** on the **ONE eCommerce** platform
- **Share access** by nominating others to view the data (contract parties to the shipment permitted)
- **Monitor in-transit container conditions**, including temperature, atmosphere (O<sub>2</sub>, CO<sub>2</sub>), and humidity
- **Track container movement** with precision
- Receive **detailed cargo condition** reports, such as Cold Treatment data for customs





## Container+

## ONE's Cutting-Edge Reefer Monitoring System

### WHAT IS **CONTAINER+**

The solution you  
need for **monitoring**  
your reefer cargo  
**with great visibility**

Contact ONE Sales and Support team  
([containerplus.support@one-line.com](mailto:containerplus.support@one-line.com)) or  
connect to ONE Chat for more information.



FAQ  
**CONTAINER+**



# Thank You

[www.one-line.com](http://www.one-line.com)