

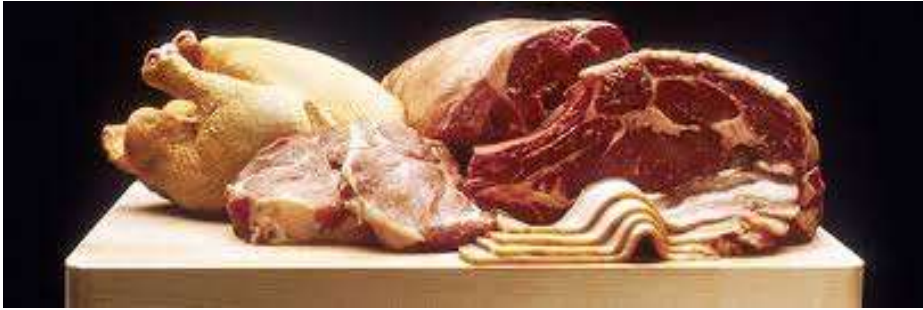
# Port of Koper Cool Workshop 2025



Koper, 11 June 2025

# Forwarders role

1. Usually when we speak about product transported in units with cool controlled atmosphere – **HIGHLY PERISHABLE CARGO!**



# Forwarders role in Port of Koper

## **2. Organisation and coordination of smooth immediate delivery is compulsory!**

It is important to organise and coordinate all necessary preparations well IN ADVANCE, with all involved parties.

Authorities involved in the logistic chain are:

- PORT OF KOPER (container and reefer terminal)
- CUSTOMS office in Port of Koper
- PHYTO-SANITARY and/or VETERINARY inspection office in Port of Koper,
- FISCAL authority,
- BIO CERTIFICATION authority ( in case organic product),
  
- Others: Ocean carriers, Inland carriers
- ..... surveyors, insurance company,...



# Koper Port: All in one place— free zone



Container terminal

Reefer Terminal

Phytosanitary &  
health control  
offices

[illegible][illegible]

**TRANSPORT DOCUMENTATION:**

- DOCUMENTS FOR PRODUCT:

- Forwarder needs to have the necessary certifications, permissions, programs and tools to be able to offer a reliable service..... and especially needs to have a specific knowledge.**

## Step by step logistic coordination (IMPORT) slide 2.

### **Coordination and agreement between: Forwarder - Ocean Carrier - Container terminal and Reefer terminal**

- Confirmation from Ocean Carrier about release of cargo ( SWB, telex release, express release,..)
- Coordination of the time, date and place of movement of container to Reefer terminal, based on plan of cargo dispatching
- Confirmation and readiness of authorities for cargo movement and check



## Step by step logistic coordination (IMPORT) slide 3.





# Step by step logistic coordination (IMPORT) slide 4.

Confirmation of THE CONTROLLED and MEASURED temperature before unstuffing.





## Step by step logistic coordination (IMPORT) slide 5.

Agreement with the Reefer terminal about the requested storage conditions,  
(temperature, ventilation/moisture, sorting of cargo, long storage availability upon clients requests or fast dispatching,...)





## Step by step logistic coordination (IMPORT) slide 6.

Phyto and Sanitary controll, bio authority cargo controll and quality control...

After completing all the requested controls on product and the product meets the EU standard regulations for import of cargo in EU, the product obtains the phytosanitary approvement to enter in EU.





# Step by step logistic coordination (IMPORT) slide 7.

Orders for loading and customs procedure: transit T1 or Import Customs Clearance





## Step by step logistic coordination (IMPORT) slide 8.

Dispatching to final destination



# Phytosanitary and Veterinary control in BIP point:

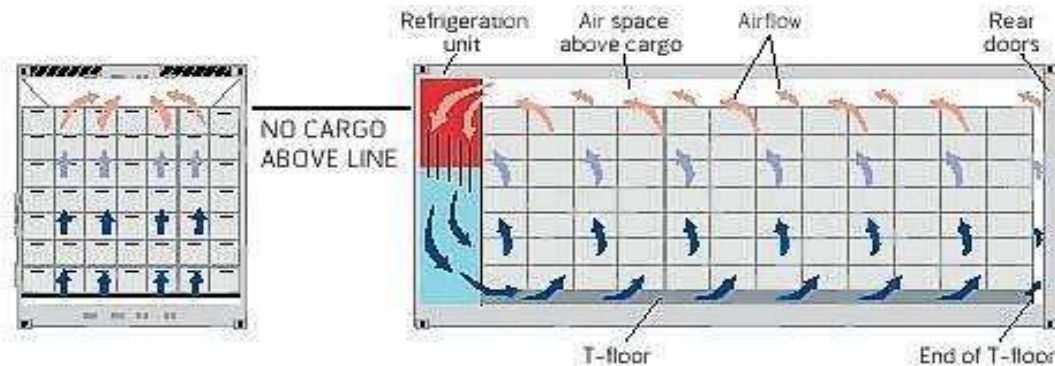
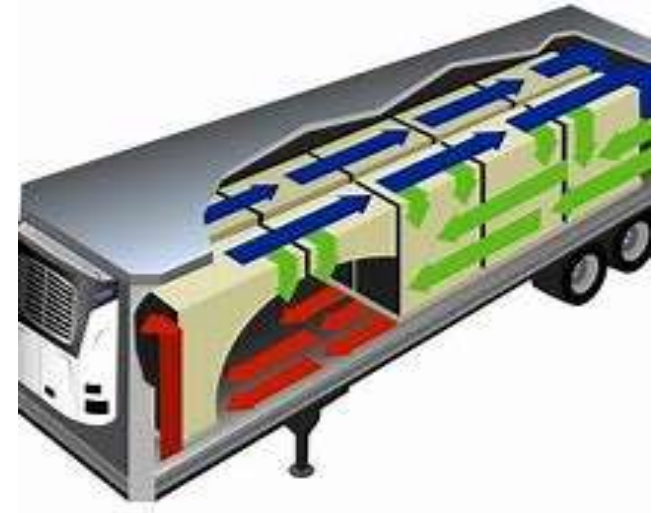
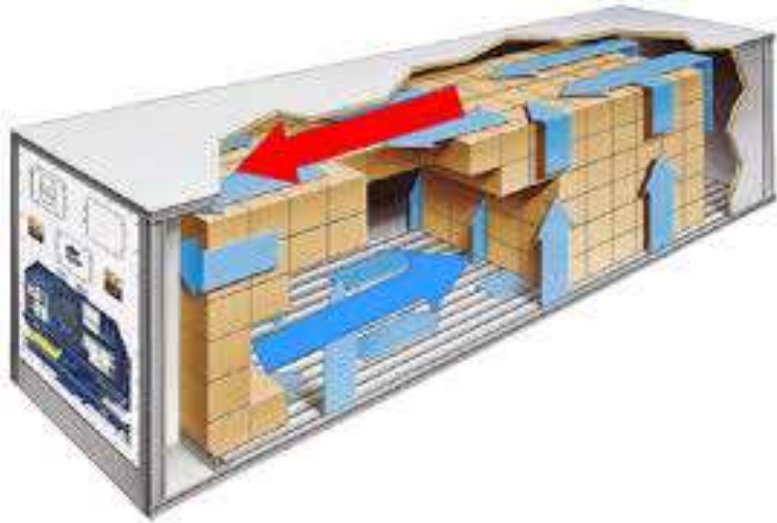
## Important:

Any product destined to EU member state, which is subject to phytosanitary control: PHYTO and/or VETERINARY inspection control HAS to be done at the first entry point into Europe: BIP (Border Inspection Post) point and is valid for all EU.



# Important to know!

Cooling systems: container - trailer



*The correct way to staff a bottom air delivery container with chilled or frozen products*



Inappropriate loaded reefer container cause problems in ventilation and subsequently cooling of product





**Prevent such situation by lashing the cargo (wood, airbags) !**

**Pallets unsuitable for normal manipulation:  
difficult dangerous work (=additional costs!)**



**Airbag to ensure stability during transport and delivery to the recipient**



# Thank you!

Patrik FILISTUN